



imageRUNNER
ADVANCE
C5560i/C5550i
C5540i/C5535i **II**

imageRUNNER ADVANCE C5500 II Series

Color | Mid-volume | Multifunction

Print up to 60 ppm (BW, color)

Scan up to 160 ipm (300 dpi) (BW, color, duplex)

Print up to 12" × 18"

6,350-sheet maximum paper capacity



Canon's comprehensive portfolio of imageRUNNER ADVANCE multifunction printers and integrated solutions can help **simplify** the end user experience and management of technology; better **control** sensitive information and print-related costs; and help ensure that technology investments proactively **evolve** with changing needs.



WORKFLOW EFFICIENCY

- 10.1" intuitive touchscreen with smartphone-like usability.
- A unique, customized experience tailored to individual preferences using My ADVANCE.
- Supports mobile solutions and integration with many popular cloud services like Google Drive and Box.¹
- Scan and convert documents to searchable digital files in a variety of file formats.
- Integration with Canon and various third-party software with embedded application platform.



SECURITY

- Advanced standard security feature set to help safeguard sensitive information and assist in regulatory compliance.
- Security policy settings can be controlled with a dedicated password, configured from a central location, and exported to other supported devices.
- Control who has access to the device, and to which features, using a host of flexible authentication methods—picture login, PIN code, user name/password, or card access.²



COST MANAGEMENT

- Track and assess print, copy, scan, and fax usage and allocate costs to departments or projects.
- Apply print policies and restrict usage by user to help reduce unnecessary printing and contribute to cost efficiency.
- Standard cloud-based solution provides a centralized dashboard with up-to-the-minute insights into printer activity.³
- Upgrade to uniFLOW server or cloud-based solutions for full accounting and reporting for compatible Canon and third-party devices, follow-me printing, job routing, and powerful scan workflows.



DEVICE AND FLEET MANAGEMENT

- Designed for quick, easy deployment.
- Remote diagnostics and parts life management for proactive maintenance and rapid fixes.
- Easy and intuitive to monitor device status and consumable levels, turn off devices remotely, observe meter readings, manage settings, and implement security policies.
- Common firmware and regular updates with Unified Firmware Platform (UFP) for continuous improvements and consistency across a fleet.



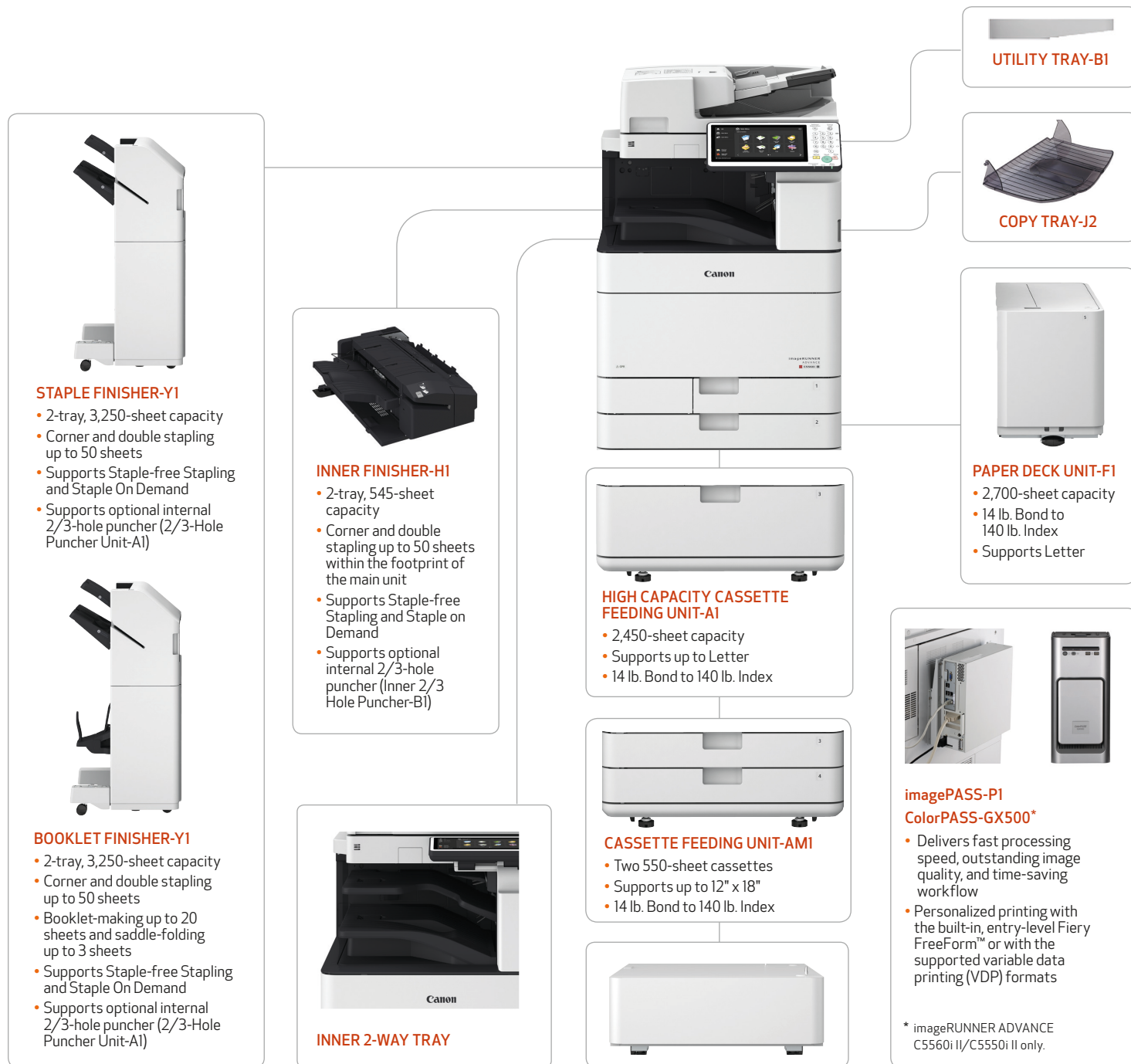
QUALITY AND RELIABILITY

- Canon's signature reliability and engine technologies help keep productivity high and minimize the impact on support resources.
- Outstanding imaging technologies and toner allow for consistently striking images, thanks to Canon's V² color profile.
- Designed to achieve maximum uptime with status notifications that help keep supplies replenished and intuitive maintenance videos for consumables replacement.



SUSTAINABILITY

- A combination of fusing technologies and low-melting-point toner minimizes power requirements and helps achieve low energy consumption.
- Encourage environmentally conscious work practices by enabling multiple settings that can help save paper and energy.
- ENERGY STAR® certified and rated EPEAT® Gold.⁴



SPECIFICATIONS

Main Unit

Type

Color Laser Multifunctional

Core Functions

Standard: Print, Copy, Scan, Send, Store
Optional: Fax

Processor Speed

Canon Dual Custom Processor (Shared)

Control Panel

10.1" TFT LCD WSVGA Color Flat-panel

Memory

4.0 GB RAM

Hard Disk

Standard: 250 GB/Maximum: 1 TB

Interface Connection

Network: 1000Base-T/100Base-TX/10Base-T,
Wireless LAN (IEEE 802.11 b/g/n)

Others

Standard: USB 2.0 x2 (Host), USB 3.0 x1 (Host),
USB 2.0 x1 (Device)
Optional: Serial Interface, Copy Control Interface

Paper Output Capacity (LTR, 20 lb. Bond)

Standard: 250 Sheets
Maximum: 3,450 Sheets
(with External Finisher and Copy Tray)

Paper Sources (LTR, 20 lb. Bond)

Standard: Dual 550-sheet Paper Cassettes,
100-sheet Stack Bypass
Optional: Dual 550-sheet Paper Cassettes
(CASSETTE FEEDING UNIT-AM1),
2,450-sheet High Capacity Paper Cassette
(HIGH CAPACITY CASSETTE FEEDING
UNIT-A1), 2,700-sheet Paper Deck
(PAPER DECK UNIT-F1)

Paper Capacity (LTR, 20 lb. Bond)

Standard: 1,200 Sheets
Maximum: 6,350 Sheets

Finishing Capabilities

Standard: Collate, Group
With Inner: Collate, Group, Offset, Staple, Hole Punch,
Finisher: Staple-free Staple, Staple On Demand
With External: Collate, Group, Offset, Staple, Booklet, Hole
Finishers: Punch, Staple-free Staple, Staple On Demand

Supported Media Types

Paper: Thin, Plain, Recycled, Color, Heavy,
Cassette 1: Pre-punched, Letterhead, Bond,
Transparency, Envelope
Paper: Thin, Plain, Recycled, Color, Heavy,
Cassette 2: Pre-punched, Letterhead, Bond,
Transparency, Tab, Envelope
Stack Bypass: Thin, Plain, Recycled, Color, Heavy,
Pre-punched, Labels, Letterhead, Bond,
Coated, Transparency, Tab, Tracing,⁵
Envelope

Supported Media Sizes

Paper: Letter, Executive, Statement-R, Envelope
Cassette 1: [No.10 (COM10), DL, ISO-C5], Custom Size
(3-7/8" x 5-7/8" to 11-3/4" x 8-1/2")
Paper: 12" x 18", 11" x 17", Legal, Letter, Letter-R,
Cassette 2: Executive, Statement-R, Envelope
[No.10 (COM10), Monarch, DL, ISO-C5],
Custom Size (3-7/8" x 7-1/8" to 12" x 18")
Stack Bypass: 12" x 18", 11" x 17", Legal, Letter, Letter-R,
Executive, Statement, Statement-R,
Envelope [No.10 (COM10), Monarch, DL,
ISO-C5], Envelope Custom Size (3-7/8" x
3-7/8" to 12-5/8" x 18"), Custom Size
(3-7/8" x 5-1/2" to 12-5/8" x 18"), Free Size
(3-7/8" x 5-1/2" to 12-5/8" x 18")

Supported Media Weights

Cassettes: 14 lb. Bond to 140 lb. Index (52 to 256 g/m²)
Stack Bypass: 14 lb. Bond to 110 lb. Cover (52 to 300 g/m²)
Duplexing: 14 lb. Bond to 80 lb. Cover (52 to 220 g/m²)

Warm-up Time

From Power On: 10 Seconds⁶
From Sleep Mode: 10 Seconds

Dimensions (W x D x H)

24-3/8" x 29-1/4" x 47-2/7" (620 mm x 742 mm x 1201 mm)⁷

Installation Space (W x D)

Basic: Stack Bypass + Cassette Drawers open:
37-1/8" x 46-3/8" (943 mm x 1176 mm)⁷

Weight

Approx. 362.7 lb. (164.5 kg)⁸

Print Specifications

Print Speed (BW and Color)

C5560i II: Up to 60 ppm (Letter); Up to 36 ppm
(Letter-R); Up to 34 ppm (Legal);
Up to 32 ppm (11" x 17")
C5550i II: Up to 50 ppm (Letter); Up to 30 ppm
(Letter-R); Up to 29 ppm (Legal);
Up to 27 ppm (11" x 17")
C5540i II: Up to 40 ppm (Letter); Up to 24 ppm
(Letter-R); Up to 23 ppm (Legal);
Up to 22 ppm (11" x 17")
C5535i II: Up to 35 ppm (Letter); Up to 23 ppm
(Letter-R); Up to 21 ppm (Legal);
Up to 18 ppm (11" x 17")

Print Resolution (dpi)

1200 x 1200, 600 x 600

Standard Page Description Languages

UFR II, PCL6, Adobe PS 3

Direct Print

Available from USB, Advanced Box, Remote UI, and
Web Access⁹

Supported File Types

PDF, TIFF, JPEG, EPS,¹⁰ XPS

Printing from Mobile and Cloud-based Services

A range of software and MEAP-based solutions are
available to provide printing from compatible mobile devices
or Internet-connected devices and cloud-based services
depending on your requirements. Please contact your sales
representative for further information.¹¹

Fonts

PCL fonts: 93 Roman, 10 Bitmap fonts, 2 OCR fonts,
Andalé Mono WT J/K/S/T (Japanese,
Korean, Simplified and Traditional Chinese),¹²
Barcode Fonts¹³
PS fonts: 136 Roman

Operating System¹⁴

UFR II: Windows Vista/Server 2008/Windows 7/
Server 2008 R2/Server 2012/Windows 8.1/
Server 2012 R2/Windows 10/Server 2016,
MAC OS X (10.7 or later)
PCL: Windows Vista/Server 2008/Windows 7/
Server 2008 R2/Server 2012/Windows 8.1/
Server 2012 R2/Windows 10/Server 2016
Windows Vista/Server 2008/Windows 7/
Server 2008 R2/Server 2012/Windows 8.1/
Server 2012 R2/Windows 10/Server 2016,
MAC OS X (10.7 or later)

Copy Specifications

Copy Speed (BW and Color)

C5560i II: Up to 60 ppm (Letter); Up to 36 ppm
(Letter-R); Up to 34 ppm (Legal);
Up to 32 ppm (11" x 17")
C5550i II: Up to 50 ppm (Letter); Up to 30 ppm
(Letter-R); Up to 29 ppm (Legal);
Up to 27 ppm (11" x 17")
C5540i II: Up to 40 ppm (Letter); Up to 24 ppm
(Letter-R); Up to 23 ppm (Legal);
Up to 22 ppm (11" x 17")
C5535i II: Up to 35 ppm (Letter); Up to 23 ppm
(Letter-R); Up to 21 ppm (Legal);
Up to 18 ppm (11" x 17")

First-Copy-Out Time

C5560i II: As fast as 2.9 seconds (BW)/
4.5 seconds (Color)
C5550i II: As fast as 3.5 seconds (BW)/
5.2 seconds (Color)
C5540i II: As fast as 4.1 seconds (BW)/
6.1 seconds (Color)
C5535i II: As fast as 4.9 seconds (BW)/
7.4 seconds (Color)

Copy Resolution (dpi)

Reading: 600 x 600
Printing: 1200 x 1200

Multiple Copies

Up to 9,999

Magnification

25%-400% (1% Increments)

Preset Reductions

25%, 50%, 64%, 73%, 78%

Preset Enlargements

121%, 129%, 200%, 400%

Basic Copy Features

Preset Reduction/Enlargement Ratios by Area, Paper
Setting, Previous Settings, Favorite Settings, Finishing,
Two-sided, Density Adjustment, Original Type Selection,
Interrupt Mode, Setting Confirmation/Cancel

Special Copy Features

Book to Two Pages, Two-sided Original, Finishing, Booklet,
Job Build, N on 1, Add Cover, Insert Sheets, Different-size
Originals, Density Adjustment, Original Type Selection,
Transparency Cover Sheets, Page Numbering, Copy Set
Numbering, Sharpness, Erase Frame, Secure Watermark,
Print Date, Shift, Gutter, Print & Check, Negative/Positive,
Repeat Images, Merge Job Blocks, Job Done Notice, Mirror
Image, Print on Tab, Store in Mail Box, Superimpose Image,
Copy ID Card, Detect Feeder Multi Sheet Feed, Free
Size Original, Color Balance, Adjust One-Touch Color,
Area Designation

Scan Specifications

Type

Color Platen and Single-Pass Duplexing Automatic
Document Feeder

Document Feeder Paper Capacity

150 Sheets (20 lb. Bond)

Document Feeder Supported Media Sizes

11" x 17", Legal, Letter, Letter-R, Statement, Statement-R

Document Feeder Supported Media Weights

BW Original: 13 lb. Bond to 58 lb. Cover (50 to 157 g/m²)
Color Original: 17 lb. Bond to 58 lb. Cover (64 to 157 g/m²)

Platen Acceptable Originals

Sheet, Book, 3-Dimensional Objects [Up to 4.4 lb. (2 kg)]

Pull Scan

Color Network ScanGear2 for both Twain and WIA
Supported OS: Windows Vista/7/8.1/10
Server 2008/Server 2008 R2/Server
2012/Server 2012 R2/Server 2016

Scan Resolution (dpi)

600 x 600, 400 x 400, 300 x 300, 200 x 400, 200 x 200,
200 x 100, 150 x 150, 100 x 100

Scan to Mobile Devices and Cloud-based Services

A range of solutions is available to provide scanning to
compatible mobile devices and certain cloud-based
services depending on your requirements.

Scan Speed (Letter)

Single-sided Scanning

BW: 80 ipm (300 dpi)/80 ipm (600 dpi)
Color: 80 ipm (300 dpi)/60 ipm (600 dpi)

Double-sided Scanning

BW: 160 ipm (300 dpi)/150 ipm (600 dpi)
Color: 160 ipm (300 dpi)/80 ipm (600 dpi)

Send Specifications

Destination

E-mail/Internet Fax (SMTP), SMB, FTP, WebDAV, Mail Box, Super G3 Fax (Optional), IP Fax (Optional)

Address Book

LDAP (2,000)/Local (1,600)/Speed Dial (200)

Send Resolution (dpi)

600 x 600, 400 x 400, 300 x 300, 200 x 400, 200 x 200, 200 x 100, 150 x 150, 100 x 100

Communication Protocol

File: FTP, SMB, WebDAV
E-mail/I-Fax: SMTP, POP3, I-Fax (Simple, Full)

File Format

Standard: TIFF, JPEG, PDF (Encrypted, Compact, Searchable, Apply Policy, Optimize for Web, PDF A/1-b), XPS (Compact, Searchable), Office Open XML (PowerPoint, Word), Digital Signature (PDF/XPS)
Optional: PDF (Trace & Smooth)

Universal Send Features

Original Type Selection, Two-sided Original, Book to Two Pages, Different-size Originals, Density Adjustment, Sharpness, Copy Ratio, Erase Frame, Job Build, Direct Send, Delayed Send, Preview, Job Done Notice, File Name, Subject/Message, Reply-to, E-mail Priority, TX Report, Original Content Orientation, Skip Blank Originals, Detect Feeder Multi Sheet Feed

Fax Specifications (Optional)

Modem Speed

Super G3: 33.6 Kbps
G3: 14.4 Kbps

Compression Method

MH, MR, MMR, JBIG

Resolution (dpi)

400 x 400, 200 x 400, 200 x 200, 200 x 100

Sending/Recording Size

Statement-R to 11" x 17"

Fax Memory

Up to 30,000 Pages

Speed Dials

Max. 200

Group Dials/Destinations

Max. 199 Dials

Sequential Broadcast

Max. 256 Addresses

Memory Backup

Yes

Fax Features

Original Type Selection, Two-sided Original, Book to Two Pages, Different-size Originals, Density for Scanning, Sharpness, Copy Ratio, Erase Frame, Job Build, Specifying the Sender's Name (when sending fax), Sender's Name (TTI), Select Line, Selecting the Telephone Line (when sending fax), Direct Send, Delayed Send, Preview, Job Done Notice, TX Report, Detect Feeder Multi Sheet Feed

Store Specifications

Mail Box (Number Supported)

100 User In-boxes, 1 Memory RX In-box, 50 Confidential Fax In-boxes, 30,000 Maximum Pages Stored

Advanced Box

Communication Protocol: SMB or WebDAV
Supported
Client PC: Windows (Windows Vista/7/8/8.1/10)
Concurrent Connections (Max.)
SMB: 64
WebDAV: 3 (Active Sessions)

Advanced Box Available Disc Space

Approx. 16 GB (Standard HDD)
Approx. 480 GB (Optional 1 TB HDD)

Advanced Box Features

Disabling Advanced Box, Storage Filtering, Authentication for Advanced Box Log-in, Search Function, Sort Function, Printing a PDF File with a Password, imageWARE Secure Audit Manager Support

Memory Media

Standard: USB

Security Specifications

Authentication

Standard: Universal Login Manager, uniFLOW Online Express,¹⁵ User Authentication, Department ID Authentication, Access Management System, Device and Function Level Log-in
Optional: uniFLOW

Data

Standard: Trusted Platform Module (TPM), Hard Disk Password Lock, Hard Disk Drive Erase, Mail Box Password Protection, Hard Disk Drive Encryption (FIPS140-2 Validated)
Optional: Hard Disk Drive Mirroring, Hard Disk Drive removal, IEEE 2600.2 Common Criteria Certification, Data Loss Prevention (Requires uniFLOW)

Network

Standard: Encrypted Secure Print, IP/Mac Address Filtering, IPsec, TLS Encrypted Communication, SNMP V3.0, IEEE 802.1X, IPv6, SMTP Authentication, POP Authentication before SMTP

Document

Standard: Secure Watermark, Secure Print, Adobe LiveCycle® Rights Management ES2.5 Integration, Encrypted PDF, Encrypted Secure Print, Digital Signature
Optional: User Signature, Document Scan Locking

Environmental Specifications

Operating Environment

Temperature: 50 to 86° F
Humidity: 20 to 80% RH (no condensation)

Power Requirements

C5560i II/C5550i II: 120-127V AC 60 Hz, 11.5 A
C5540i II/C5535i II: 120-127V AC, 60 Hz, 10 A

Plug (Main Unit)

C5560i II/C5550i II: NEMA 5-20P
C5540i II/C5535i II: NEMA 5-15P

Power Consumption

Maximum: Approx. 1.8 kWh
Standby: Approx. 66.2 W
Sleep Mode: Approx. 0.8 W¹⁷
Typical Electricity Consumption (TEC) Rating:
3.2 kWh (iR ADV C5560i II)
2.5 kWh (iR ADV C5550i II)
2.0 kWh (iR ADV C5540i II)
1.6 kWh (iR ADV C5535i II)

Standards

ENERGY STAR® Certified
Rated EPEAT® Gold⁴
RoHS Compliant

Consumables

Toner

GPR-55 Toner¹⁸

Toner Yield (Estimated @ 5% Coverage)

Black: 69,000 Images
Color (C,M,Y): 60,000 Images

¹ Subscription to a third-party cloud service required. Subject to third-party cloud service providers' terms and conditions.

² Requires additional option.

³ Available 2Q 2018.

⁴ For current EPEAT rating (Gold/Silver/Bronze), please visit www.epeat.net.

⁵ Some types of tracing paper cannot be used.

⁶ Time from device power-on to when copy jobs can be programmed with Quick Start Up mode.

⁷ Includes main unit and either Cassette Feeding Unit-AM1, High Capacity Cassette Feeding Unit-A1, or Cabinet Type-N.

⁸ Includes main unit, consumables, and Cassette Feeding Unit-AM1.

⁹ PDF print from Web sites is supported.

¹⁰ EPS can be printed directly only from the Remote User Interface.

¹¹ For more information, including compatibility, please visit <https://www.usa.canon.com/mobile-app>.

¹² Requires the optional PCL International Font Set-A1.

¹³ Requires the optional Barcode Printer Kit-D1.

¹⁴ Other operating systems and environments including AS/400, UNIX, Linux and Citrix may be supported. Some of these solutions are chargeable. SAP Device Types are available via the SAP Market Place. For more information, contact your sales representative.

¹⁵ No charge for this solution; however activation is required.

¹⁶ Check for availability.

¹⁷ 0.8 W Sleep mode not available in all circumstances due to certain settings.

¹⁸ GPR-55L Toner also available for Color (C, M, Y). Yield (estimated @ 5% coverage) is 26,000 images.

For detailed specifications and a comprehensive list of optional accessories, see the imageRUNNER ADVANCE C5500II Series Specifications document.

USA.CANON.COM/SIMPLYADVANCED



As an ENERGY STAR® Partner, Canon U.S.A., Inc. has certified these models as meeting the ENERGY STAR energy efficiency criteria through an EPA recognized certification body. ENERGY STAR and the ENERGY STAR mark are registered U.S. marks. Canon, imageRUNNER, imageWARE, imagePASS, and the GENUINE logo are registered trademarks or trademarks of Canon Inc. in the United States and may also be registered trademarks or trademarks in other countries. It indicates that this model has been upgraded to new system software and includes additional security features as standard. Canon products offer certain security features, yet many variables can impact the security of your devices and data. Canon does not warrant that use of its features will prevent security issues. Nothing herein should be construed as legal or regulatory advice concerning applicable laws; customers must have their own qualified counsel determine the feasibility of a solution as it relates to regulatory and statutory compliance. All other referenced product names and marks are trademarks of their respective owners. All features presented in this brochure may not apply to all Series and/or products and may be optional; please check with your Canon Authorized Dealer for details. Product shown with optional accessories. Canon U.S.A. does not provide legal counsel or regulatory compliance consultancy, including without limitation, Sarbanes-Oxley, HIPAA, GLBA, Check 21 or the USA Patriot Act. Each customer must have its own qualified counsel determine the advisability of a particular solution as it relates to regulatory and statutory compliance. Specifications and availability subject to change without notice. Not responsible for typographical errors. ©2018 Canon U.S.A., Inc. All rights reserved.

Federal Law prohibits copying of certain documents. Violators may be subject to penalties. We suggest that you check with your own legal counsel. Canon U.S.A., Inc. and Canon Canada, Inc. intend to cooperate with Law Enforcement Agencies in connection with claims of unauthorized copying.

0210W706
03181-IRA5500IISRSB-PDF-IH

