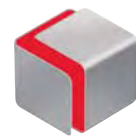


Canon



**imageRUNNER
ADVANCE
C7270/C7260**

Canon satisfies seven requirements as an office hub

C7270



User-Centric Intelligent Usability.

imageRUNNER ADVANCE was born targeting the ultimate ease of use. Based on customer feedback, that user-centric control has now been further improved. The theme is “intelligent usability.” Expanding the range of the “do-able” and enhancing both the process and the results, Canon puts more fun into the document workflow. The new imageRUNNER ADVANCE strengthens the connection with the business scene.

メインメニュー




カスタムメニュー



状況確認/中止



C7270

 Main Menu



Select a function.



Show All



Copy



Fax



Scan and
Send



Scan and
Store



Access
Stored Files



Fax/I-Fax
Inbox



Secure
Print



Tutorial

1

2

4

5

7

8

*

0

認証

ID

クリ

リセット



実行/メモリー

Canon satisfies seven requirements as an office hub:
 Usability, High Speed, Finishing, Paper Handling, Sharing, Network, and Management

Toward an Easy-to-Use Central Machine

01 USABILITY



Large, Legible, Easy to Use Point

8.4-inch LCD touch panel

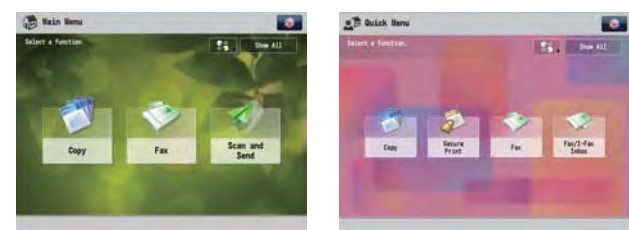
Considering the environment, Canon provided an LED as backlight to provide increased illumination. The power key lights up in sleep mode to act as the power-saving key, allowing intuitive understanding of sleep mode and operation resumption.




Changeable Button Display for Easier Use

Main Menu customization

The number of buttons and their display sequence on the Main Menu can be customized according to everyday work needs. It supports efficient operation with fewer errors and less delay.



Color Universal Design (CUD) Certification Mark
 This product has received the Color Universal Design (CUD) certification mark from the non-profit Color Universal Design Organization (CUDO) attesting that it can convey information to any user regardless of their color perception.

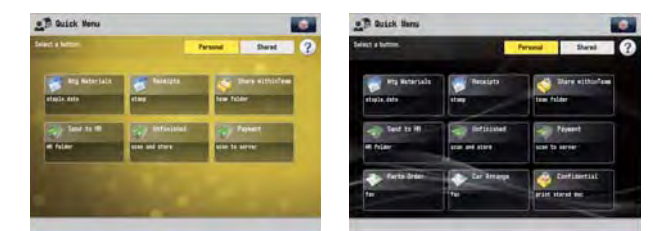


(Actual size) *High-Speed Start may not be available under certain conditions.

One-Touch Control Improves Efficiency

Custom Menu

Frequently used settings, such as "2 on 1/2-sided" or "Compact PDF/OCR," can be combined and registered for individual users. The target job can be performed with one-touch control.



Fast Operation from Power ON Point

Reduced warm-up time and High-Speed Start*

High-volume output is more efficient and low-volume output is stress free. This high-speed machine offers a reduced warm-up time of less than 31 seconds and a return from Sleep Mode in less than 30 seconds. With "High-Speed Start at Power ON," screen operation can be performed within seven seconds of switching on the main power supply.



Easy Replenishment Whatever the Paper Size

Paper supply

Paper cassettes open with a push of a button. The paper size is automatically recognized when users set it.

Basic Performance with Enhanced Speed

02 COPY



Copy screen allows easy confirmation of current settings. Copy speed is 70 sheets per minute B/W and 60 sheets per minute color (both A4 landscape).^{*1} It supports a wide variety of copy needs.

Preset Operation Raises Copy Workflow Efficiency

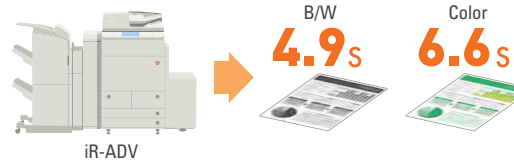
Favorite Settings

Saving time and effort for each copy, frequently used settings can be registered in memory keys. The Previous Settings key is also handy, recalling up to three registered copy settings.

Quick Response for Print Jobs

Reduced First-Copy-Out time

This high-speed machine also boasts faster first-copy output than ever: first B/W copy in 4.9 seconds and first color copy in 6.6 seconds.^{*2} The time to copy start is shortened to respond to user's urgent copy needs.

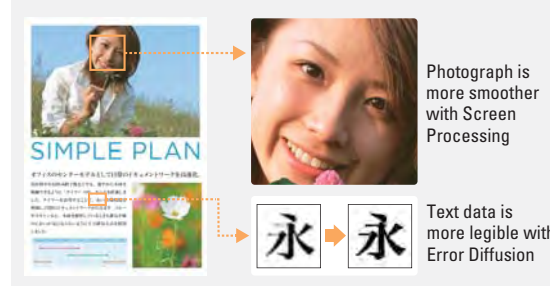


Vivid Photo, Sharp Text

Screen Processing and Error Diffusion

In Text/Photo mode, photographic content appears smoother with Screen Processing and text is sharper with Error Diffusion. By processing each section appropriately, photograph is more beautiful and text more legible.

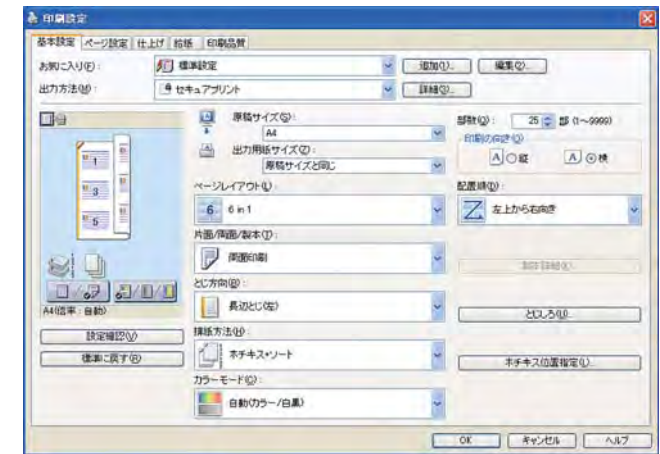
Image



Photograph is more smoother with Screen Processing

Text data is more legible with Error Diffusion

03 PRINT



An easy-to-use, graphical user interface is provided. The print driver^{*3} efficiently performs a variety of functions including paper selection, paper source and finishing.

Reduce Costs by Cutting Unnecessary Output

Erande My Print for MEAP ADVANCE^{*4}

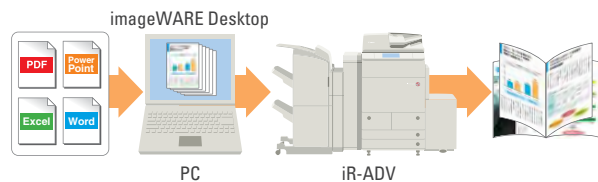
Print data is temporarily saved in memory and only the required job is selected and output from the user job list. It prevents unnecessary output and reduces costs. It is easy to install and requires no special set up.



From Edit to Output **Point** on a Computer

imageWARE Desktop*4

Data created by using a variety of applications can be integrated into a single file. Users can edit, change orders, delete pages, check the finished product in preview, and then output. You will be able to complete all work efficiently on your computer to print.



Selectable PDL According to the OS and the Kind of Work

Multi-PDL compatible

Depending on the office needs, the OS, work contents, etc., users can choose from multiple page description languages (PDLs) including Canon proprietary LIPS LX, which realizes high-speed data processing, Adobe® PostScript®3™,*5 and LIPS V*6 that provides backwards compatibility with LIPS.

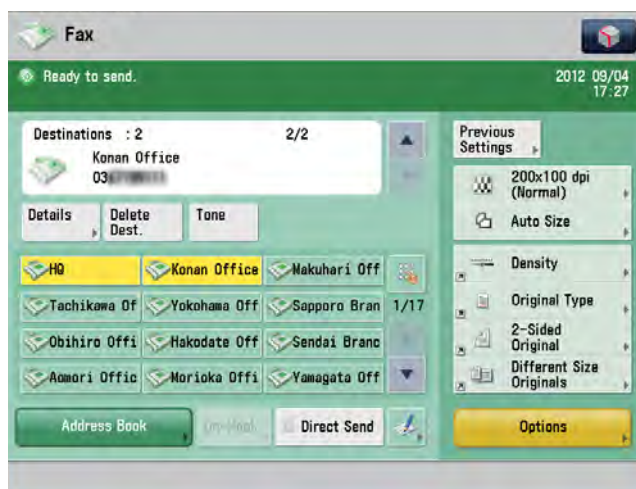
LIPS LX

Print from a Smartphone or Tablet PC

Canon Mobile Printing*7

Printing web pages or PDF files from mobile devices connected to wireless LAN access points is easy, using the iPhone- and iPad-compatible print application.

04 FAX



The simple dedicated fax screen offers the same smooth operation as a dedicated fax machine. Super G3 fax delivers*8 a maximum transmission speed of 33.6kbps, or high-speed 2-second communication.

Prevention of Wrong Transmission for Improved Confidentiality

Fax security

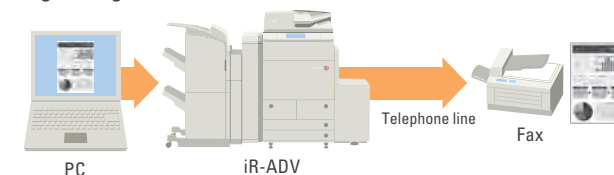
Wrong transmissions are prevented by the Confirm Entered Fax Number function and the Access Number Management function. Moreover, it conforms to FASEC1, the fax security guideline for business use.



Paperless for Reduced Costs

Fax driver

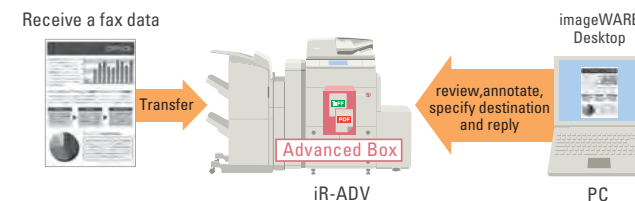
The fax driver enables users to send paperless faxes from a computer. In addition to reducing paper costs, it also ensures that there are no smudges or blurs. It also enables efficient fax log management.



Efficient Fax Work **Point**

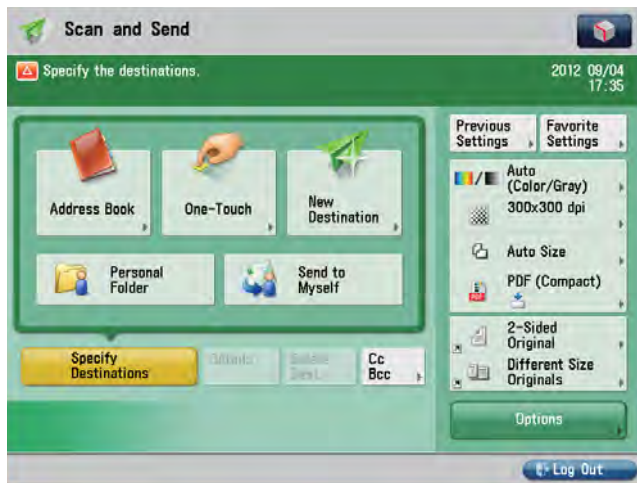
Fax transfer and imageWARE Desktop

Incoming fax documents are sent to the Advanced Box in the main unit, where they can be accessed and viewed from a desktop computer. Furthermore, using imageWARE Desktop, users can perform a variety of operations from their computer, such as review, annotate, specify destination and reply.



A Base for Data-Network Utilization

05 SCAN



Address specification and other setup operations are easy to perform on the Scan and Send screen. Registering key sequences in the Favorite Settings (top right) further enhances operating efficiency. My Folder and Send to Myself buttons are also convenient.

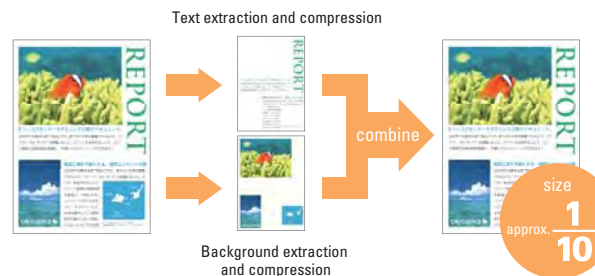
An Abundance of Variations to Meet any Requirement

Point

Adobe®PDF compatible

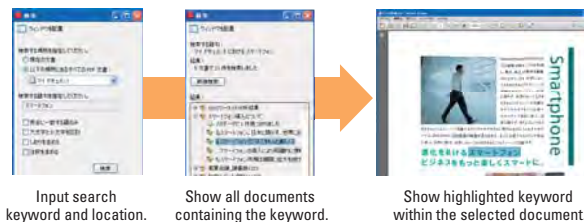
■ Compact PDF reduces file size

PDF files compressed to approx. one tenth of the original reduce the load on networks and servers. The new function Compact PDF for Text Documents further improves file saving and transmission efficiency.



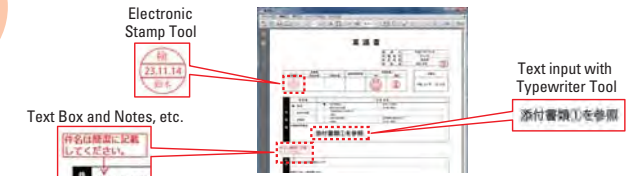
■ Searchable PDF improves usability*1

OCR processing adds text data to the scanned documents, enabling users to retrieve documents and reuse the text.



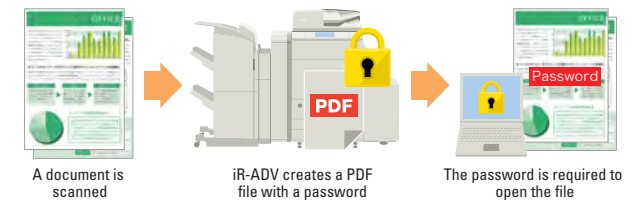
■ Editable PDF with Reader Extensions*1

Users can make a simple edit such as adding notes, correcting and putting signatures by using Adobe®Reader (V7 and later).



■ Encrypted PDF for enhanced security

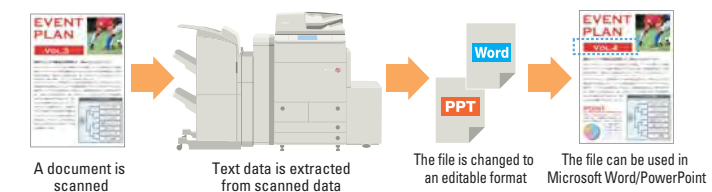
Password-protected PDF allows only authorized users to open the files, resulting in improved security.



Scanned Documents can be Used as Microsoft PowerPoint or Word Files

Office Open XML compatible*1

Text data is added by OCR processing when scanning and Office Open XML compatible files are created. Scanned documents can be used as Microsoft PowerPoint or Word file. In PowerPoint, the graphic data is also processed in outline. The time and labor required to input and edit paper document data are sharply reduced. It also promotes paper recycling.

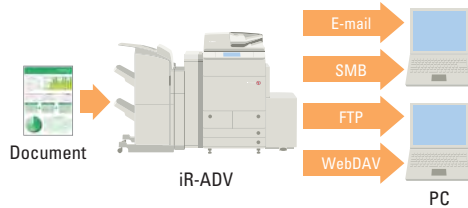


06 SEND

Variety of Document-Sending Options

Supports multiple protocols

SMB Send function allows users to share information within an office without using any server. Sending with FTP/WebDAV protocols is also supported. Documents can also be sent by E-mail with a variety of settings in the similar way as on computers.



Effective Personal Scanning / Sending

Send to Myself and My Folder*2

The Scan and Send screen now provides a simple button to digitize documents for personal storing. Select Send to Myself to send to a personal E-mail address or My Folder to send to a specified folder.

Minimize Network Load

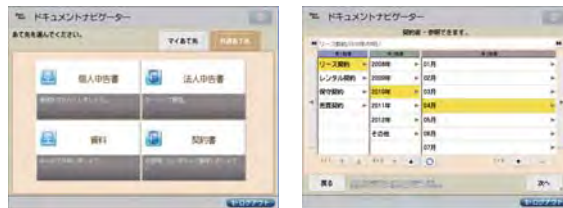
Anypage Scan for MEAP ADVANCE*3

In conjunction with personal authentication, the Send to Myself function allows storage of scan data sent by E-mail in the Advanced Box. By E-mailing only the storage location to users, imageRUNNER ADVANCE conserves digital infrastructure resources by reducing E-mail server and network load.

Easily Specify Destinations for Storing Documents

Document Navigator*3

Document Navigator allows users to directly specify folders for storing scanned documents by displaying hierarchy of folders on their own computers. Documents can be saved with appropriate names matching their content and purpose, eliminating the need to return to the computer to rename documents and reorganize folders.

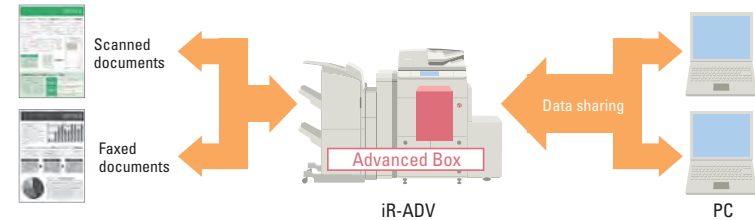


07 STORAGE

Create a Serverless Document-Sharing Environment

Advanced Box*4

Advanced Box uses dedicated hard disk space on the printer for document sharing with SMB and WebDAV protocols. It enables document sharing between the imageRUNNER ADVANCE and computers on the same network without having to go through servers. It also allows users to preview images of documents using the touch panel.



Print Out Documents as Needed

User Box

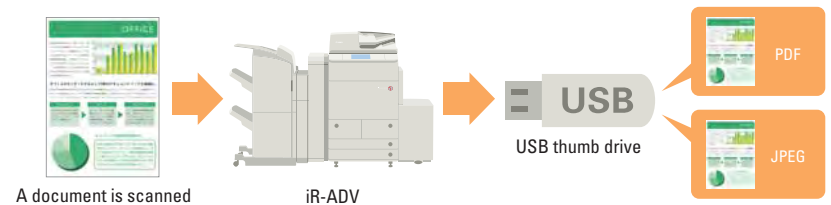
Storing scanned documents in the User Box makes it easy to print out repeatedly as necessary. The preview images allow quick and easy browsing of stored documents.



Easily Save Scanned Data to a USB

USB thumb drive

The imageRUNNER ADVANCE has USB ports on its side, allowing users to save scanned data onto USB thumb drive or to print out data*5 from USB thumb drive with ease.



would be irretrievably lost if a hard disk failure occurred *5 When printing out PDF files, PS Printer Kit-AS1 or Direct Print Kit-J1 and Additional Memory Type D (512MB) will be required.

Great Flexibility in Both Productivity and Management

08 PAPER HANDLING

Full Range of Optional Accessories to Improve Productivity

Offers Six-way paper feeding with a 7,960-sheet maximum capacity and a variety of finishing options

Point

Automatic Document Feeder

Offers a paper capacity of 300 sheets (64g/m²). Capable of simultaneously scanning both sides of a document. The new faster document tray lifter improves reading efficiency. Ease of use is also enhanced by the paper ejection light to prevent users forgetting the original, a new mechanism in the document tray to improve reading speed (reading time from switching ON the start button is about 2.2 seconds less than conventional machines), etc.

Buffer Path Unit-J1

This unit needs to be attached to use the Staple Finisher-L1 or Booklet Finisher-L1.

Price (w/o tax) 60,000 yen

Booklet Finisher-L1

The finisher delivers advanced in-line finishing capabilities with two output trays. It provides a 50-sheet staple capacity (64g/m²), supporting corner, double, and saddle stitch stapling.

Price (w/o tax) 450,000 yen

External 2 Hole Puncher-A1

The puncher needs to be attached along with the Staple Finisher-L1 or Booklet Finisher-L1 and brings punching capabilities to register 2 punch holes on the output.

Price (w/o tax) 60,000 yen

Document Insertion/ Folding Unit-G1

Paper folding unit supporting Z-folds and C-folds with a cover inserter as one system.

Price (w/o tax) 800,000 yen

* Requires attachment along with Staple Finisher-L1 or Booklet Finisher-L1. Power supply is separate from the Main Unit.

Copy Tray-P1

The tray can be installed on the left side of the Main Unit with a paper capacity of 250 sheets (64g/m²).
Price (w/o tax) 10,000 yen



Paper Deck (Standard)

The standard paper decks provide a paper capacity of 1,250 sheets (64g/m²).

2 x 680-Sheet Cassettes (Standard)

The standard paper cassettes provide a paper capacity of 680 sheets (64g/m²) per cassette.

Stack Bypass (Standard)

The Stack Bypass provides a paper capacity of 100 sheets (64g/m²).

POD Deck Lite-A1

This large paper deck holds up to 4,000 A3-sized sheets (64g/m²). It has the capacity to respond to large-size, high-volume output needs.

Price (w/o tax) 400,000 yen

* Power supply is separate from the Main Unit.

Staple Finisher-L1

This finisher provides a 50-sheet staple capacity (64g/m²), supporting corner and double stapling.

Price (w/o tax) 280,000 yen



Paper Deck Unit-C1

It can be installed on the right side of the Main Unit, holding up to 4,000 A4-sized sheets (64g/m²) to meet volume printing needs.

Price (w/o tax) 230,000 yen



* The photo shows the C7270 model with Booklet Finisher-L1, Buffer Path Unit-J1, External 2 Hole Puncher-A1, Document Insertion/ Folding Unit-G1, POD Deck Lite-A1 attached.

09 FINISHING

Broad Range of Finishing to Meet Requirements

Point

Automated finishing with Collate/Group/Staple

Allows users to Collate print output according to department, and Group output according to pages. The finisher also offers the Staple function.

Booklet finishing delivers saddle-stitch bound booklets

Automatically copy originals to double-sided. The booklet finisher bounds them like 2-fold booklets.



Streamlined Finishing to Suit the Task Z-fold, C-fold and punch functions

Support Z-fold, which folds paper into a compact form, and C-fold, handy when inserting sheets into envelopes. In addition, it is also compatible with expansion of the 2 hole punch function.



Z-fold



C-fold



Punch

10 MANAGEMENT

Reduce Configuration and Operation Overhead

Remote UI and Remote Operation

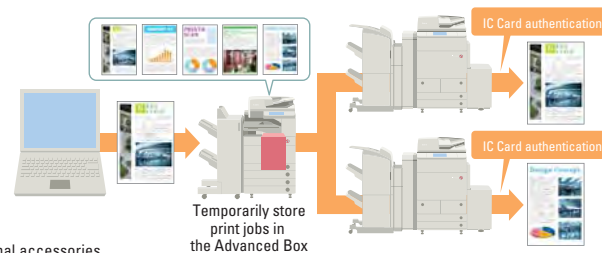
Remote UI enables integrated management from a desktop computer of all print function settings and of the Advanced Box. Furthermore, the Remote Operation function makes it possible to remotely operate the printer from a desktop computer using the same user interface as provided on the printer itself. It supports prompt management and operation in response to inquiries from a remote location.



Print from Any Device to Avoid Unnecessary Prints and Unattended Print-outs

Serverless Anyplace Print for MEAP ADVANCE*1

Print data is temporarily held in the Advanced Box. Combined with IC-card authentication, this enables secure and serverless printing from any imageRUNNER ADVANCE in the same network. It prevents unattended print-outs and reduces unnecessary prints because users only see their own job-list displayed.



optional accessories.

Remote Power Off All Devices

Point

Remote Shutdown

Remote UI allows users to turn off the power to the imageRUNNER ADVANCE from the computer. Functions such as imageWARE Management Agent enable simultaneous shut down at a specified time. In addition to reducing management overhead during legal inspections, for example, it also contributes to the reduction of power costs during long vacations.

Enhance Security while Reducing Costs

Point

IC Card Authentication Pro for MEAP ADVANCE*1*2

This system improves efficiency by enabling personal authentication using existing IC cards such as employee cards.^{*3} Security is improved while costs are reduced by the limitations imposed on users and functions.



Help to Reduce Costs by Usage Analysis

Point

imageWARE Accounting Manager for MEAP*1

This aggregate analysis tool realizes enhanced security and reduced costs based on print volume and print log. Users can also view their own monthly usage figures, etc., on the display panel to encourage more awareness of costs and security.

Accounting Manager	
前回のページ集約の設定は簡単に行えます。無駄の少ない印刷を心掛けましょう。	
集計の対象	0002000
コピープリント状況	2010/03/16 10:28 - 2010/04/20 11:54
カラーストック	白黒定額
1,980	1,920
使用金額	合計金額
3,160	7,060
通貨単位: JPY	前回までのコピー/プリント結果

Accounting Manager	
画面やページ集約の設定は簡単に行えます。無駄の少ない印刷を心掛けましょう。	
集計の対象	0002000
コピープリント状況	2010/03/16 10:28 - 2010/04/20 11:54
カラーストック	白黒定額
96	370
カラー比率	黒面比率
20%	53%
目標値: 30%以下	目標値: 30%以上
34%	34%
前回までのコピー/プリント結果	前回までのコピー/プリント結果

11 SECURITY

Security Measures for Safety

Erasing all data stored on the hard disk

Hard disk drive data encryption

IEEE 2600 compliant



Increasing the Confidentiality of Job Data

Erasing all data stored on the hard disk

Digital data generated on the hard disk drive when copying or printing documents is overwritten as soon as the job is finished. Moreover, it also features a hard disk drive lock function to prevent unauthorized access to internal hard disk drive data.

Minimize the Risk of an Information Breach from the iR-ADV

Hard disk drive data encryption*4

By encrypting the data inside the hard disk drive, the risk of information being compromised if the printer is stolen or a similar case occurs is minimized. For hard disk drive data encryption, the iR-ADV contains a Canon MFP Security Chip with ISO15408 (Common Criteria) certification (EAL3), guaranteeing proper evaluation of its security performance.

Safety with International Security Certification

IEEE 2600*5

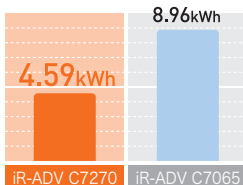
This device is compliant with the international standard on information security for multifunction printers, IEEE Std. 2600TM-2008.

ENVIRONMENT

Power Reducing and High Productivity

Low power consumption design

While improving the high-speed specifications, the unit offers a significant reduction in TEC*1 value (an indicator of low energy consumption). It offers a balance of superb productivity with energy saving, and also uses less than one watt of power in sleep mode.



Point

Environmental Consciousness Backed with Long Duration / Low Power Use

LED Lighting

LED lighting is used to backlight the LCD. The lighting efficiency is greatly improved by raising the brilliance of the light guides.

*1 Figures from measurement methods defined under the International ENERGY STAR Program. Castings have achieved 5V classification under the UL 94 Flammability Standard.

Wide-ranging Response to Environmental Needs

Compliance with standards

The iR-ADV is compliant with the Ecomark, the International ENERGY STAR Program, and the Law on Promoting Green Purchasing. It is also compliant with the RoHS Directive, which bans the use of six hazardous materials.



Contribute to a Cleaner Environment

Bio-based Plastic*3

Bio-based plastic certified by the Japan BioPlastics Association is used for the touch pen, which your hand will touch each time you use the printer, the buttons and part of the exterior plastic castings.



*2 Plant based plastics designed to reduce environmental footprint. Exterior plastic

Supports Remote Control for Stable Operation

NETEYE *Contract is required separately (gratis)

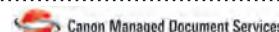
This on-line support system detects the main unit's situation via the internet and carries out prompt maintenance. Able to automatically update to the latest version for main unit software.



Provides the Optimal Document Environment

onBIZZ *Contract is required separately (non-gratis)

This total support service provides the optimal document environment. It contributes to cost reduction and productivity.



onBIZZ

For product information,



Canon Marketing Japan Corporate Information (English)

canon.jp/8060e



*Product information can also be checked from a mobile device.

Built-in Service Technician Tools

The imageRUNNER ADVANCE Series provides the following built-in service technician tools designed for prompt delivery of required services when trouble occurs. Service technicians use these tools upon customer's assent.

- Service Technician Browser: Accesses the device web portal and views troubleshooting and countermeasure examples and other relevant information at a customer site.
- Updater: Downloads the latest firmware over the Internet at a customer site.

●Design and specifications are subject to change without notice, due to product improvements. The contents of this brochure are based on the design and specifications as of October, 2012. ●The pricing does not include photosensitive unit and consumables pricing as well as the corresponding consumption tax for each accessory. Consumption taxes will be added when you purchase the main unit, optional accessories, or consumables or when you ask your service technician for assistance. ●Maintenance services are required at regular intervals. Ask your sales representative for costs and consumables pricing. ●Performance components which are part of required maintenance services will be kept in store for a minimum of 7 years after the product went out of production. (Performance components are components required to maintain product performance.) ●Microsoft, Windows, and Windows Vista are trademarks of Microsoft Corporation, registered in the US and other countries. ●Apple and Macintosh are trademarks of Apple Computer, Inc., registered in the US. ●Adobe, PostScript, PostScript 3, and the PostScript logo are trademarks of Adobe Systems Incorporated, registered in the US. ●IPK/SPX is a trademark of Novell Inc., registered in the US. ●Canon, the Canon logo, imageRUNNER, Satera, and imageWARE are registered trademarks of Canon Inc. ●BMLinkS is the registered trademark of the Japan Business Machine and Information System Industries Association. ●All other trademarks are the property of their respective owners. ●Copy samples provided in this brochure may differ from actual output. ●Screenshots provided in this brochure are edited.

Warning:

- Possession of copies may be subject to punishment for violation of the law. These include:
 - ① Currencies in circulation within and outside this country, government securities, and government and regional bond certificates
 - ② Unused postal stamps and postcards
 - ③ Duplicated government stamps
- Copying copyrighted material, such as books, music, paintings, block prints, maps, movies, drawings, or photos, is prohibited except for personal, family, or other limited use.
- A designated administrator is required for management and control of this product to prevent unauthorized copying.



Product Lineup



C7270

- Copy/print speed
 - COLOR 60ppm
 - BLACK & WHITE 70ppm
- First-Copy-Out time (FCOT)
 - COLOR 6.6sec.
 - BLACK & WHITE 4.9sec.

When the optional Booklet Finisher-L1, Buffer Path Unit-J1, External 2 Hole Puncher-A1, Document Insertion/Folding Unit-G1, POD Deck Lite-A1 are attached.



C7260

- Copy/print speed
 - COLOR 55ppm
 - BLACK & WHITE 60ppm
- First-Copy-Out time (FCOT)
 - COLOR 6.6sec.
 - BLACK & WHITE 4.9sec.

When the optional Staple Finisher-L1, Buffer Path Unit-J1, External 2 Hole Puncher-A1, Paper Deck Unit-C1 are attached.

Main Unit pricing (w/o tax)

C7270 · 3,300,000 yen | C7260 · 3,000,000 yen

* The Duplex Color Image Reader Unit-F1 included.



To use the product safely:

- Before using the product, read the product documentation carefully and thoroughly.
- Use the product only within the specified output power and input outage.



● Purchase Canon products at our store that you can always trust.

Canon Canon Inc.
Canon Marketing Japan Inc.

CANON TOWER 2-16-6 Konan, minato-ku, Tokyo, 108-8011 Japan

As of October, 2012