

# Aficio<sup>®</sup> 470W

Wide Format Digital Imaging Systems



**A Ricoh Aficio by design:**  
*A new benchmark for productivity*

**RICOH<sup>®</sup>**

# Aficio<sup>®</sup> 470W

**The advanced-design, wide-format digital imaging system that puts the focus on productivity and simplicity.**

## **Aficio: The Digital Leader**

The Ricoh Aficio 470W is the first wide-format system to carry the Aficio name, the leading brand of digital office products in the U.S. today. The first to introduce digital multifunctional copiers, Ricoh now delivers an all-digital wide-format copier/printer/scanner system that novice and experienced users alike can use easily and efficiently.

Aficio imaging delivers unparalleled original-quality copies. It produces 600-dpi resolution with 256 levels of grayscale every time to match the original with precision. CAD designers require precise reproduction. The Aficio 470W consistently and accurately copies/prints line widths, shadings, cross hatches, solid fill areas and all the other drawing symbols of plot drawings, plans and maps.



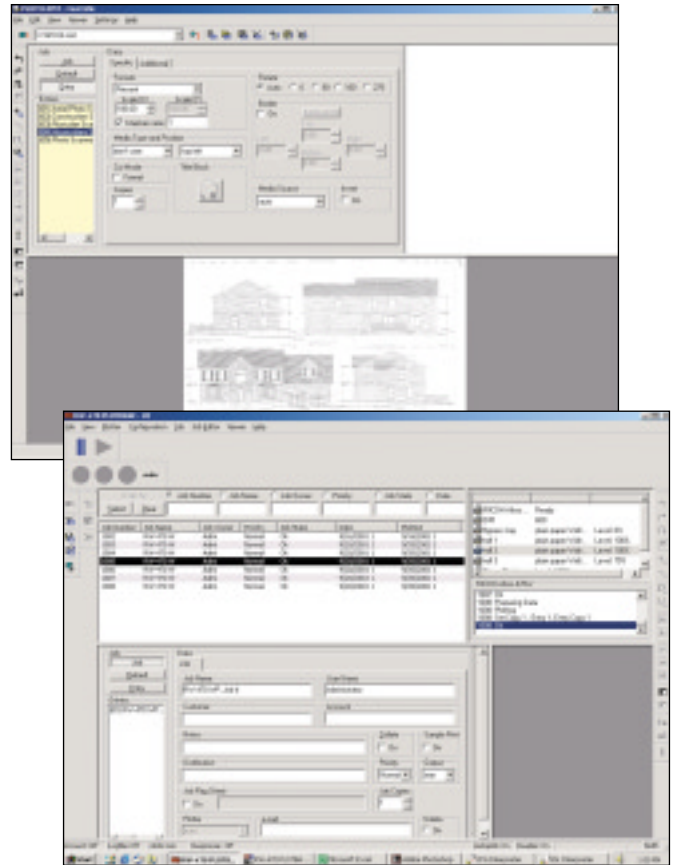
## Bring network power to your wide format environment:

*The new RW-470 PLOTBASE controller takes productivity to the next level*

For all its power and versatility as a copier, the Aficio 470W offers even more. Scanning, plotting, network-printing, Internet printing and printing directly from CAD, Windows, Mac and UNIX applications—they're all part of the 470W's powerful capabilities when you add the new optional RW-470 print controller with PLOTBASE software.

The RW-470 PLOTBASE controller lets multiple users create and produce jobs from their workstations for printing at the central Aficio 470W system. Draftsmen and engineers become more productive, and can edit, print, archive and distribute finished documents fast.

With the RW-470's powerful PLOTBASE and PLOTCLIENT software, you create a job ticket, including Account Tracking Trial/Locked Printing. You can rotate an image, alter lines and gray shades, insert stamps, create and adjust margins, add or delete text, re-size the overall drawing and select output media and paper. It lets you do all that and more right from your workstation.



### Mastering CAD with the RW-470's HDI/ADI driver

Plot .DWG files directly from any version of AutoCAD, including AutoCAD 2000. Print-for-pay operators no longer need to ask customers to resubmit AutoCAD files as plot files, or to do the extra work themselves and be forced to charge more for the labor.

### PC WebClient: Harnessing the Internet

For large organizations and print-for-pay operations, PC WebClient is an attractive alternative to using PC-resident PLOTCLIENT software on individual workstations. With PC WebClient, log on to a password-protected web site and access the PLOTCLIENT print screen directly online via the company Intranet or the Internet. In the print-for-pay environment, customers can send electronic files for printing directly to your business over the Internet.



### **Screen ScanTool: *Power and Flexibility***

For those hard-copy, wide format originals, scanning, revising, printing and storing are just a few clicks away with the RW-470 PLOTBASE's versatile, optional ScanTool. Take a wide format original, scan it in, revise, scale, clean up or add text to the original, and you're ready to print and store the new image anywhere on your network for future easy retrieval.

### **From PowerPoint to Wide Format**

Need an oversize print of an Excel spreadsheet, a MS Project chart or a PowerPoint presentation? Eliminate outsourcing costs and time for enlarged copies. With the PLOTBASE WinPrint Driver, files created in any Windows application can be sent via the PLOTBASE controller server directly to the Aficio 470W for printing. You save time and get a clear, high quality print with 600dpi resolution—ideal for meeting-room presentations.

### **The RW-470 takes wide format to a new level**

There's never been this kind of versatility and productivity in wide format system. Whether you're printing, scanning, plotting, revising or archiving, the Aficio 470W and RW-470 PLOTBASE controller make a potent team for your imaging needs. For engineers and architects, manufacturers and print shop operators, the Aficio 470W is a tool you can't afford to be without.

**RICOH®**

## Save Both Time and Money

The unsurpassed productivity and simplicity of the Aficio 470W begin with its bright touch display and control panel. The touch screen provides precisely the information you need, when you need it, on a brightly illuminated, easy-to-read display. You'll be just as impressed by the fast throughput speed of the Aficio 470W. It operates at seven "D"-size copies per minute – much faster than comparable competitive models.

*"The control panel is just like our other copiers. It's a common-sense touch screen. No one needs to show you."*

– Ramona Holmes  
Kraus-Anderson® Construction Company



## Go With the Workflow

*The Aficio 470W features important new workflow innovations.*

**Electronic sorting** lets you collate sets of copies more easily and efficiently than ever before. You'll no longer need to set aside valuable office space to collate sets by laying out piles of documents and manually collating. Just scan in the original set once, select the desired number of collated sets, and the Aficio 470W automatically does the rest. You can even rotate sort documents up to C size. With an optional hard disk drive, the Aficio 470W will electronically sort up to 100 D size originals in a set.



*"Effortlessly put in your originals and – bing, bang, boom – your collated sets are done. It's awesome."*

– Marilyn Pantera  
Kraus-Anderson® Construction Company

**The scan-once-print-many** capability of the Aficio 470W saves wear and tear on your important originals and reduces the time you need to spend feeding originals into the copier.

*"Aerial photo glossies blow up from 8" x 10" to 32" by 40" with beautiful quality and very clear details."*

– Ramona Holmes

**Front and Rear stacking** of originals and copies makes document handling easy.

**Reductions/Enlargements** are easy to do with the combination of Aficio 470W's excellent image quality and its zoom enlargement capability of up to 400 percent.

**Paper roll replacement** couldn't be easier. No threading a rod through the core. Simply put plastic flanges in either end of the new roll and lay it in the tray. With a one-touch command, the roll is automatically fed and trimmed. And the Aficio 470W toner cartridge makes replacing toner a snap.

*"So incredibly easy, everyone's jaw drops when I demonstrate how to change a roll."*

– Marilyn Pantera

## Advanced Copying Features

Document stamping gives Aficio 470W copies the "custom" look of an original. Documents can be stamped through a simple set of touch commands on the touch display and control panel. Select from an assortment of pre-set stamps or scan in your own. Choose stamp placement in any of six positions on the copies. You can even add background numbering, page numbering of sets and date stamping. Document stamping requires the optional Stamp Board and the hard disk drive.



# Aficio® 470W

## Wide Format Digital Imaging System

### Specifications:

<b>Configuration:</b>	Single Footprint Console with Touchscreen Control Panel
<b>Paper Source:</b>	Standard 2 Roll and Sheet Bypass, Optional 3rd Roll Feeder
<b>Warm-up Time:</b>	Less than 2 minutes
<b>First Copy Time:</b>	18 Sec for D size
<b>Resolution:</b>	600 dpi x 600 dpi
<b>Speed:</b>	7 cpm/ppm D size; 4 cpm/ppm E size
<b>Gray Scales:</b>	256 levels
<b>Gray Scale Printing:</b>	4 levels
<b>Reduction/Enlargement:</b>	25% to 400% Zoom: 25%-200% by 0.1% steps; 200% to 400% by 0.2% steps
<b>Multiple Copies:</b>	1-99
<b>Cutting Method:</b>	Auto Synchronized, Preset, Variable
<b>Memory Capacity:</b>	160 MB Standard; Optional Hard Disk Drive for stamping, collating and overlaying
<b>Original Copy Size:</b>	Maximum: 36" x 19.5" (49" in SP mode) Minimum: 8.3" x 7.1"
<b>Original Exits:</b>	Top, Top-Rear; Rear Straight Path
<b>Copy Exits:</b>	Front Internal Tray; Rear Copy Stacker
<b>Power Source:</b>	120V/60Hz; 20A
<b>Dimensions:</b>	50" x 29" x 47"
<b>Weight:</b>	485lbs

### Engine Features:

- Auto Paper Select
- Automatic Paper Roll Feed
- Nine Original Quality Modes
- Printed Meter Click
- Stamping/Image Editing/Image Overlay/Shift Erase
- Sorting/Rotate Sorting (Up to 18" x 24")
- Three Original Exits, Two Copy Exits
- TouchScreen Control Panel

### Engine Options:

- Second Paper Tray Type A (3rd Roll)
- Hard Disk Drive Type 470 (For Stamping, Overlay, Sorting/Rotate Sort, Repeat Copy)
- Stamp Board Type A
- Original/Copy Stacker Catch Tray
- Roll Holder Type A

### Printer Options: Requires Printer Controller Type RW-470 Interface Board Type 470

#### Controller PC Server Minimum Requirements:

- Server Op. System: Windows® 2000 (Service Pack 1 Required)
- Processor: Pentium 3 or 4, 800 Mhz or Higher
- PCI Interface Slot: PCI 2.0 or Higher
- System Memory: Minimum 512 MB RAM Recommended
- Hard Drive: 10 GB or More Memory
- Network Interface: 10/100 Base T Ethernet
- Monitor: Minimum 1024 x 768 Pixels Resolution
- CD ROM Drive

#### Network Protocol: TCP/IP, IPX/SPX, lpr/lpq, HTML, SMB

**Output File Format:** TIFF (uncompressed G3/G4), T6X, BMP, CIT, RLC, HPGL/2, HP/RTL, CalComp 906/907, PCX, WMF, CALS, DWG  
Optional Postscript3, CGM

**Maximum Speed:** 7 ppm (D size), 4ppm (E size)

**Maximum Print Size:** 19.6'

### Printer Features: (PLOTBASE SOFTWARE)

- Auto Paper Size Select
- Border Setting
- Click Charge (Acct. Tracking)
- Collation
- Image Rotation
- Limitless Paper Feed
- Locked Print
- Magnification (1-999%)
- Media selection
- Mirror Setting
- Multiple Copy Roll Select
- Output Tray Select
- Pen Setting
- Sample Print
- Simultaneous Scanning and Printing
- Stamp Setting (Text & Enhanced)
- Status Monitor

### Scanner Option: RW-470 Scanner Option (SCANTOOL SOFTWARE)

#### Controller: PC External Server (Same Server as for Printer)

- Maximum Speed: 7ppm (24" x 36")
- Resolution: 150-1200 dpi
- Scan Size: Min. 8.5" x 9", Max. 36" x 236"
- File Formats: TIFF (uncompressed/G3/G4), T6X, BMP, RLC, HP-RTL, PCX, CALS 1&2

### Other Controller Options:

- RW-470 Postscript 3 Emulation
- RW-470 CGM



OFFICIAL COPIER AND FAX  
OF THE PGA OF AMERICA



EPA 2000 Office Products Partner of the Year (5th consecutive year)  
EPA 2000 Labeling Partner of the Year

Ricoh Corporation has determined that this product meets the Energy Star® guidelines for energy efficiency.

Ricoh Consumables. For maximum performance and yield, we recommend using genuine Ricoh parts and supplies.

Specifications and external appearance are subject to change without notice.

♻️ Printed in the U.S.A. on recycled paper because Ricoh cares.

RICOH is a registered trademark of Ricoh Company, Ltd.

All other trademarks are the property of their respective owners. © Ricoh Corporation

**RICOH®**  
Image Communication

Ricoh Corporation, Five Dedrick Place, West Caldwell, NJ 07006  
Phone: (973) 882-2000 www.ricoh-usa.com