

Color Production Printer

# RICOH Pro C5100s/C5110s

Printer  Copier  Facsimile  Scanner

**RICOH**  
imagine. change.



**Pro C5100s**  
65 ppm  
monochrome and full-color

**Pro C5110s**  
80 ppm  
monochrome and full-color

## See where productivity meets affordability

Designed specifically for high-quality, low-cost output in production environments, the RICOH® Pro C5100s/C5110s color digital printer combines incredible speed with intuitive controls and advanced capabilities. Use it to produce exceptional images with vivid colors and clarity on a wider range of media without compromising convenience, space or resources. Keep high-grade, professional jobs in-house and share them quickly and economically. This versatile, easy-to-use production printer can be used as a primary device in production settings or as an affordable, complementary system in CRD or print center environments.

- Print full-color or black-and-white documents at up to 80 ppm
- Impress customers with color image resolution up to 1200 x 4800 dpi
- Manage a wide range of media up to 13" x 19.2"
- Share documents quickly with innovative scanning capabilities
- Load up to 8,250 sheets for outstanding paper capacity
- Produce more projects in-house with advanced finishing options



## Keep growing as you save space and reduce costs

High-speed color and versatile performance for production environments

### Innovative technology, superior quality

The RICOH Pro C5100s/C5110s prints documents with up to 1200 x 4800 dpi image resolution for professional-grade results. Take advantage of its revolutionary Vertical Cavity Surface Emitting Laser (VCSEL) technology for precise reproductions. It emits laser beams to adjust to sheet expansion and contraction, which minimizes color shift. The printer automatically readjusts paper to align front and back registration for more accurate printing even during your longest print runs. It also includes an elastic fusing belt to ensure better, more consistent transfer and toner adhesion on specialty stocks.



### Versatile controllers, proven performance

Choose from two Fiery print controllers to simplify print management in either Windows or Mac environments. The optional Fiery E-22B color controller handles most CRD jobs and color management tasks with ease while the optional Fiery E-42B color server is designed to give users even more advanced control for high-quality performance that's usually reserved for larger, more expensive devices in high-end commercial print environments.



### Powerful features, productive workflow

Seamlessly move from one project to the next with the RICOH Pro C5100s/C5110s printer. It offers an intuitive, post mounted control panel with easily identifiable icons for fast navigation to critical tasks and functions. It produces up to 80 color prints per minute for impressive throughput in any environment. This workhorse is designed so trained users can easily replace key units and consumables themselves without technical assistance. Users can even replace toner in moments without interrupting print runs.



# Take advantage of innovative features to improve productivity

- 1 CI4010 and CI4020 Cover Interposers (Optional):** Feed pre-printed sheets from one or two sources for front and back covers.
- 2 SR4100 2,000-Sheet Booklet Finisher (Optional):** Produce full-color booklets cost-effectively with the in-line Booklet Finisher. Also available with an optional Hole Punch Unit.
- 3 SR4110 and SR4090 3,000-Sheet Finishers (Optional):** Choose from 65- or 100-sheet stapling with the ability to output documents up to 13" x 19.2". Add the optional Hole Punch Unit for even more flexibility.
- 4 FD4000 Multi-Fold Unit (Optional):** Execute six different folds to create a variety of finished documents.
- 5 BK5010e Production Booklet Maker (Optional):** Saddle stitch up to 30 sheets to create 120-page booklets with square folds.
- 6 GBC StreamPunch™ (Optional):** Create professional-quality bound books with in-line punching in a variety of patterns.
- 7 Buffer Pass Unit (Optional):** Minimize toner adhesion on stacked, coated paper by cooling output prior to the media entering a finishing unit.
- 8 Decurl Unit (Optional):** Promote more accurate stacking and higher throughput by reducing the risk of paper curling.
- 9 220-Sheet Document Feeder (Standard):** Copy and scan jobs more efficiently with single-pass color duplex scanning — up to 220 ipm in duplex mode.
- 10 Full-Color WVGA Control Panel (Standard):** Navigate from job to job easily with fingertip control via the post mounted, intuitive touch screen.



- 11 **Status Light Pole:** Visually alert operators to changes in system status for prompt attention.
- 12 **Automatic Duplexing (Standard):** Save paper and filing space with standard automatic duplexing that runs at the same speed as one-sided output.
- 13 **VCSEL and PxP-EQ Toner Technology (Standard):** Vertical Cavity Surface Emitting Laser and high-quality toner provide more vivid colors and smooth gradations for micro type, fine lines, graphics and photographic reproductions.



- 14 **320GB Hard Disk Drive (Standard):** Secure documents with DataOverwriteSecurity System (DOSS), data encryption, Locked Print and more.
- 15 **Oversize and Heavy Media Support:** Accepts 13" x 19.2" paper sizes and heavy media (up to 110 lb. Cover through the Bypass Tray and the RT4030 LCT) to give you many more options for in-house production.
- 16 **Paper Trays (Standard):** Standard paper sources include the tandem 2 x 1,250-Sheet Paper Tray, two 550-Sheet Paper Trays and 250-Sheet Bypass Tray for a total paper capacity of 3,850 sheets. With additional paper sources, this system can hold up to 8,250 sheets.
- 17 **Active Tray Indicators:** Indicator light shows which tray is in use, allowing operators to refill other paper sources while the system is running.
- 18 **RT4030 and RT4020 Large Capacity Trays (Optional):** The RT4030 2,200-Sheet LCT utilizes a straight paper path to help reliably feed up to 110 lb. Cover stock (300 g/m<sup>2</sup>) and up to 13" x 19.2" sheets. Choose the RT4020 4,400-Sheet LCT to handle paper sizes up to 8.5" x 11" and up to 80 lb. Cover stock (216 g/m<sup>2</sup>).
- **Broad Compatibility:** Quickly integrate these systems with built-in compatibility for PC and Mac environments.
- **Fiery® Color Controllers (Optional):** Create end-to-end workflows with your choice of two digital front ends (DFEs), the Fiery E-22B or server-based E-42B Color Controllers, for advanced color management, automation tools, ease of use and speed.

**RICOH Pro C5100s/C5110s**

# Add versatile color to the workplace

## Advanced image control

Enhance documents with rich, engaging color. The RICOH Pro C5100s/C5110s uses proprietary PxP-EQ chemical toner to expand color density and saturation. As a result, it can deliver brilliant quality color using a minimal amount of toner. Because the toner melts at lower temperatures, it requires less energy and minimizes operating costs. It also continually monitors image quality along with internal and external conditions so you can print highly visible material — including business cards, catalogs, invitations, direct mail and more — with incredible color clarity and consistency.



## Multiple media options

Print more types of jobs on a wider range of paper. The RICOH Pro C5100s/C5110s can handle thicker paper stocks, up to 256 g/m<sup>2</sup> at duplexing speeds, and stocks up to 300 g/m<sup>2</sup> for standard printing. It allows you to print on up to 13" x 19.2" (SRA3++) sized paper as easily as smaller sizes, including textured, heavy-coated media and envelopes. The printer will accept almost any paper size automatically to streamline printing. Use its embedded Paper Library feature to access and adjust up to 99 printing attributes in moments. With its total paper capacity of 8,250 sheets, it's the perfect system for your black-and-white and color production needs.



## Professional-grade finishing

Configure the RICOH Pro C5100s/C5110s to deliver more robust jobs and bring previously outsourced projects in-house. Extensive stapling, hole punching, saddle stitching, booklet finishing and other related features are available to address pressing demands and quick turnarounds. Insert pre-printed front and back covers with a Cover Interposer. Take advantage of a Multi-Fold Unit to offer a variety of folding options. The system even offers a Buffer Pass Unit and Decurl Unit for the specialized requirements of production environments.



# Comprehensive control to protect and build your business

## Sustain eco-friendly operations

The RICOH Pro C5100s/C5110s offers several features to reduce typical energy consumption (TEC), including proprietary PxP-EQ low-temperature chemical toner. Standard one-pass duplex scanning saves steps and energy to maximize efficiency. And for organizations looking to evaluate products that deliver environmentally friendly solutions, the RICOH Pro C5100s/C5110s qualifies at the Silver level for EPEAT® (Electronic Product Environmental Assessment Tool) for imaging equipment. EPEAT is a not-for-profit registry that helps identify greener electronic devices by assessing conformance to various environmental criteria. For more information, see <http://www.ricoh-usa.com/about/epeat/?alnv=env&cpt=EPEAT>.



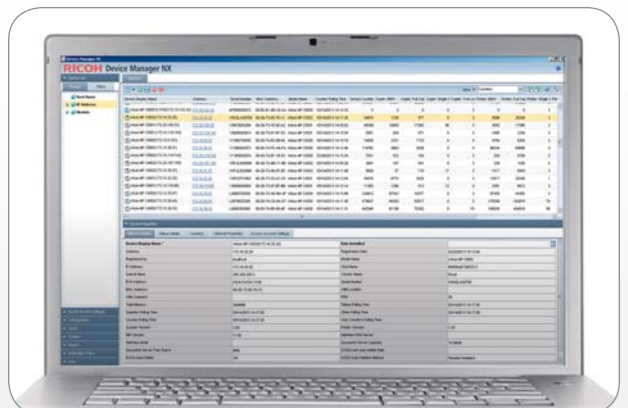
## Add versatile workflow

The RICOH Pro C5100s/C5110s lets you handle a wider range of printing, copying and scanning jobs to meet customer demands efficiently while helping to reduce operating costs. Use it to produce almost any print and copy job — from basic everyday monochrome output to colorful and complex visuals — quickly, with low costs per page. Scan and share documents in moments with convenient scan-to features. Save files to USB or SD cards and carry projects with you. With its combination of advanced features and compact footprint, it fits seamlessly into the most demanding production centers and in the smallest graphics departments where compelling prints and high efficiency are essential.



## Control administration and security

Protect your most valuable assets — including the RICOH Pro C5100s/C5110s — with a host of innovative features. The printer offers Ricoh's @Remote solution to simplify meter- and maintenance-related device management. Take advantage of authentication controls to help ensure only authorized users have access to key functionality and printed output. In addition, the printer includes the standard DataOverwriteSecurity System (DOSS) that automatically overwrites any files on the hard drive to render them unreadable. HDD encryption adds another layer of protection against hackers.



# RICOH Pro C5100s/C5110s

## SYSTEM SPECIFICATIONS

### Specifications

<b>Print/Copy Process</b>	4 drum dry electrostatic transfer system with internal transfer belt
<b>Fusing</b>	Oil-less belt fusing method
<b>System Memory</b>	320GB (160GB x 2)
<b>Document Feeder</b>	220-Sheet ADF with single-pass color duplex scanning at up to 220 ipm
<b>Control Panel</b>	Full-color 9" WVGA touch panel
<b>Copy Resolution</b>	600 dpi
<b>Print Resolution</b>	1200 x 4800 dpi
<b>Scan Resolution</b>	600 dpi
<b>Scan Speed (FC/B&amp;W)</b>	Simplex: 120 ipm; Duplex: 220 ipm
<b>Maximum Print Area</b>	Up to 12.7" x 18.9" (323 x 480mm) (from platen)
<b>Warm-Up Time</b>	Less than 299 sec.
<b>Output Speed</b>	Pro C5100s: 65 ppm (FC/B&W) Pro C5110s: 80 ppm (FC/B&W)
<b>Paper Capacity</b>	Tray 1: 1,250 x 2; Trays 2 – 3: 550 x 2; Bypass Tray: 250 sheets; Supports duplex; Total Standard/Maximum: 3,850/8,250 sheets
<b>Paper Size</b>	Tray 1: 8.5" x 11"; Trays 2 – 3: 5.5" x 8.5" – 13" x 19.2"; Bypass: 5.5" x 8.5" – 13" x 19.2", Envelopes
<b>Paper Weight</b>	Tray 1 – 3: 16 lb. Bond – 140 lb. Index (52 – 256 g/m <sup>2</sup> ); Bypass Tray: 16 lb. Bond – 110 lb. Cover (52 – 300 g/m <sup>2</sup> ); Duplex: 16 lb. Bond – 140 lb. Index (52 – 256 g/m <sup>2</sup> )
<b>Maximum Monthly Volume</b>	150K
<b>Duty Cycle</b>	300K
<b>Power Requirements</b>	208-240V/12A/60Hz (dedicated)
<b>Maximum Power Consumption</b>	2,400W or less
<b>Dimensions (WxDxH)</b>	32.9" x 34.6" x 48.4" (835 x 880 x 1,230mm) (including ADF)
<b>Weight</b>	Less than 574 lbs. (261 kg)

### Copier Features

Simplified Display, Auto Paper Selection, Auto Start, Auto Tray Switching, Auto Image Density, Auto Color Calibration, Interrupt Copy, User Codes (1,000), Job Programs (25), Color Erase/Convert/Overlay, Electronic Sort/Stack, Image Rotation, Rotate Sorting, Bates Numbering, Multiple Security Features (DOSS, Data Encryption (AES256bit/SHA2)), Network User Authentication, Unauthorized Copy Control, Mandatory Security Information Print (Compulsory Security Stamp), SMTP over SSL

### Accessories

#### RT4030 DLT Large Capacity Tray (LCT)

<b>Paper Capacity</b>	2,200 sheets
<b>Paper Size</b>	Up to 13" x 19.2"
<b>Paper Weight</b>	16 lb. – 110 lb. Cover (52 – 300 g/m <sup>2</sup> )
<b>Dimensions (WxDxH)</b>	34.2" x 28.7" x 25.9" (869 x 730 x 658mm)
<b>Weight</b>	180 lbs. (82 kg)

#### RT4020 Large Capacity Tray (LCT)

<b>Paper Capacity</b>	4,400 sheets
<b>Paper Size</b>	8.5" x 11"
<b>Paper Weight</b>	16 lb. – 80 lb. Cover (52 – 216 g/m <sup>2</sup> )
<b>Dimensions (WxDxH)</b>	19.7" x 21.3" x 24.6" (500 x 540 x 625mm) (with LG unit)
<b>Weight</b>	44 lbs. (20 kg)

#### CI4010 Cover Interposer

<b>Paper Size</b>	5.5" x 8.5" – 13" x 19.2"
<b>Paper Weight</b>	17 lb. Bond – 80 lb. Cover (64 – 216 g/m <sup>2</sup> )
<b>Stack Capacity</b>	200 sheets
<b>Dimensions (WxDxH)</b>	19.7" x 23.6" x 23.6" (500 x 600 x 600mm)
<b>Weight</b>	26 lbs. (12 kg)

#### CI4020 Two-Source Cover Interposer

<b>Paper Size</b>	5.5" x 8.5" – 13" x 19.2"
<b>Paper Weight</b>	17 lb. Bond – 80 lb. Cover (64 – 216 g/m <sup>2</sup> )
<b>Stack Capacity</b>	200 sheets x 2 trays
<b>Dimensions (WxDxH)</b>	21.2" x 28.7" x 50" (540 x 730 x 1270mm)
<b>Weight</b>	99 lbs. (45 kg)

#### SR4090 3,000-Sheet Finisher with 65-Sheet Stapler

<b>Capacity (Proof Tray)</b>	250 sheets (8.5" x 11" or smaller)
<b>Capacity (Shift Tray)</b>	50 sheets (8.5" x 14" or larger) 8.5" x 11": 3,000 sheets 8.5" x 14" – 13" x 19.2": 1,500 sheets

<b>Paper Size</b>	5.5" x 8.5" – 13" x 19.2"
<b>Paper Weight</b>	Proof Tray: 16 lb. Bond – 80 lb. Cover (52 – 220 g/m <sup>2</sup> ); Shift Tray: 16 lb. Bond – 110 lb. Cover (52 – 300 g/m <sup>2</sup> )
<b>Staple</b>	8.5" x 11" – 11" x 17": 65 pages; 13" x 19.2": paper cannot be stapled
<b>Dimensions (WxDxH)</b>	25.8" x 24.1" x 37.8" (657 x 613 x 960mm)
<b>Weight</b>	117 lbs. (53 kg)

#### SR4110 3,000-Sheet Finisher with 100-Sheet Stapler

<b>Capacity (Proof Tray)</b>	500 sheets (8.5" x 11" or smaller) 250 sheets (8.5" x 14" or larger)
<b>Capacity (Shift Tray)</b>	8.5" x 11": 3,000 sheets; 8.5" x 14" – 11" x 17": 1,500 sheets; 12" x 18" – 13" x 19.2": 1,000 sheets

<b>Paper Size</b>	5.5" x 8.5" – 13" x 19.2"
<b>Paper Weight</b>	Proof Tray: 16 lb. Bond – 80 lb. Cover (52 – 216 g/m <sup>2</sup> ); Shift Tray: 16 lb. Bond – 110 lb. Cover (52 – 300 g/m <sup>2</sup> )
<b>Staple</b>	8.5" x 11": 100 pages; 8.5" x 14" – 11" x 17": 50 pages
<b>Dimensions (WxDxH)</b>	31.7" x 28.7" x 38.5" (806 x 730 x 980mm)
<b>Weight</b>	165 lbs. (75 kg)

#### SR4100 2,000-Sheet Booklet Finisher

<b>Capacity (Proof Tray)</b>	250 sheets (8.5" x 11" or smaller) 50 sheets (8.5" x 14" or larger)
<b>Capacity (Shift Tray)</b>	8.5" x 11": 2,000 sheets 8.5" x 14" – 13" x 19.2": 1,000 sheets

<b>Paper Size</b>	5.5" x 8.5" – 13" x 19.2"
<b>Paper Weight</b>	Proof Tray: 16 lb. Bond – 80 lb. Cover (52 – 216 g/m <sup>2</sup> ); Shift Tray: 16 lb. Bond – 110 lb. Cover (52 – 300 g/m <sup>2</sup> )
<b>Staple</b>	8.5" x 11" – 11" x 17": 65 pages; 13" x 19.2": paper cannot be stapled
<b>Saddle Stitch Staple Folding Without Staple</b>	8.5" x 11" – 13" x 19.2": 20 pages

<b>Dimensions (WxDxH)</b>	25.8" x 24.1" x 37.8" (657 x 613 x 960mm)
<b>Saddle Stitch Weight</b>	28 lb. Bond Max. (64 – 105 g/m <sup>2</sup> )
<b>Weight</b>	117 lbs. (53 kg)

#### FD5000 Multi-Folding Unit

<b>Folding Type</b>	Single Sheet Mode: Z-Fold, Half-Fold/Print inside, Half-Fold/Print outside, Letter Fold-in/Print inside, Letter Fold-in/Print outside, Letter Fold-out, Double Parallel/Print inside, Double Parallel/Print outside, Gate-Fold/Print inside, Gate-Fold/Print outside
---------------------	--

<b>Multiple Sheets Mode</b>	Same as Single Sheet mode; up to 3 sheets
<b>Paper Size</b>	Single Sheet Mode: Z folding: 8.5" x 11" – 12" x 18"; Half folding: 8.5" x 11" – 13" x 19.2"; Letter folding: 8.5" x 11" – 12" x 18"; Double Parallel folding: 8.5" x 11" – 12" x 18"; Gate folding: 8.5" x 11" – 12" x 18"; Half folding: 8.5" x 11" – 13" x 19.2"; Letter Fold-out: 8.5" x 11" – 12" x 18"; Letter Fold-in: 8.5" x 11" – 12" x 18"

<b>Dimensions (WxDxH)</b>	18.5" x 38.5" x 28.75" (470 x 980 x 730mm)
<b>Weight</b>	203 lbs. (92 kg)

#### Buffer Pass Unit

<b>Paper Size</b>	Up to 13" x 19.2"
<b>Paper Weight</b>	16 lb. – 110 lb. Cover (52 – 300 g/m <sup>2</sup> )
<b>Dimensions (WxDxH)</b>	13" x 38.6" x 28.5" (330 x 980 x 725mm)
<b>Weight</b>	202 lbs. (92 kg)

#### Decurl Unit

<b>Decurl Function</b>	Five steps pressure adjustment (from operation panel)
------------------------	---

<b>Paper Size</b>	Up to 13" x 19.2"
<b>Paper Weight</b>	16 lb. – 110 lb. Cover (52 – 300 g/m <sup>2</sup> )
<b>Dimensions (WxDxH)</b>	6.7" x 38.9" x 28.7" (170 x 990 x 730mm)
<b>Weight</b>	66 lbs. (30 kg)

#### GBC StreamPunch

<b>Paper Size Punched</b>	8.5" x 11" LEF
<b>Paper Weight</b>	20 lb. Bond – 110 lb. Index (216 g/m <sup>2</sup> )
<b>Die Sets</b>	CombBind®, Twin Loop Wire (2:1 or 3:1), ColorCoil®, VeloBind®, Three-Ring, ProClick®

#### BK5010e Production Booklet Maker

<b>Paper Size</b>	8.5" x 11" – 11" x 17"
<b>Paper Weight</b>	16 lb. Bond – 110 lb. Index (216 g/m <sup>2</sup> )

### Additional Accessories

PU5000 Punch Unit; PU3060 Punch Unit; Output Jogger Unit Type M2; 11" x 17" Tray Unit Type M2; Tab Sheet Holder Type M2; File Format Converter Type E; Copy Data Security Kit Type G; Copy Tray Type M2; Cooling Fan Unit Type M2; TCRU Type 5100

### Fiery E-22B Color Controller Specifications

<b>Controller Type</b>	Embedded Type
<b>Fiery Platform</b>	Fiery FS100
<b>Maximum Continuous Print Speed</b>	Pro C5100s: 65 ppm (FC/B&W) Pro C5110s: 80 ppm (FC/B&W)
<b>CPU</b>	Intel Pentium G850 2.9GHz
<b>Host Interface</b>	10/100/1000Base-TX Ethernet
<b>Memory</b>	2GB
<b>Internal HDD</b>	500GB
<b>Operating System</b>	Linux
<b>Network Protocol</b>	TCP/IP (IPv4/IPv6), SMB
<b>Printer Description Language</b>	Adobe PostScript 3 (std.), PCL6/5c (std.)
<b>Maximum Print Resolution</b>	1200 x 4800 dpi
<b>Maximum Scan Resolution</b>	Up to 600 dpi
<b>Fonts</b>	PS3: 138 fonts/PCL: 80 AGFA fonts
<b>Operation Panel Utilities</b>	Via touch panel display on the MFP Standard: Command WorkStation 5, Fiery Scan, Printer Delete Utility, Fiery Web Tools, Fiery Bridge, Fiery VUE, Secure Print Optional: Fiery Impose, Fiery Compose, Color Profiler Suite ES-2000, Productivity Package
<b>Color Management Tools</b>	ICC Profile, Color Chart, CMYK Color Reference Pages, RGB Color Tests, Trapping Support, ColorWise Pro Tools Color Cal, ES-2000 (opt.)
<b>Calibration</b>	

### Fiery E-42B Color Controller Specifications

<b>Controller Type</b>	Server Type
<b>Fiery Platform</b>	Fiery FS100 Pro
<b>Maximum Continuous Print Speed</b>	Pro C5100s: 65 ppm (FC/B&W) Pro C5110s: 80 ppm (FC/B&W)
<b>CPU</b>	Intel i5-2400 3.1GHz
<b>Host Interface</b>	10/100/1000Base-TX Ethernet
<b>Memory</b>	2GB
<b>Internal HDD</b>	1TB
<b>Operating System</b>	Windows 7 Professional
<b>Network Protocol</b>	TCP/IP (IPv4/IPv6), SMB
<b>Printer Description Language</b>	Adobe PostScript 3 (std.), PCL6/5c (std.)
<b>Print Resolution</b>	1200 x 4800 dpi
<b>Scan Resolution</b>	600 dpi
<b>Fonts</b>	PS3: 138 fonts/PCL: 80 AGFA fonts
<b>Operation Panel Utilities</b>	Via touch panel display on the MFP Standard: Command WorkStation 5, Fiery Scan, Printer Delete Utility, Fiery Web Tools, Fiery Bridge, Fiery VUE Optional: Fiery Impose, Fiery Compose, Color Profiler Suite ES-2000, Graphic Arts Package Premium Edition Upgrade, FACI Furniture Bundle, HDD Security
<b>Color Management Tools</b>	ICC Profile, Color Chart, CMYK Color Reference Pages, RGB Color Tests, Trapping Support, ColorWise Pro Tools Color Cal, ES-2000 (opt.)
<b>Calibration</b>	
<b>Power Requirements</b>	100-240V/3.0A/50-60Hz
<b>Maximum Power Consumption</b>	350W
<b>Dimensions (WxDxH)</b>	8.3" x 19" x 19.2" (212 x 482 x 488mm)
<b>Weight</b>	43.1 lbs. (19.6 kg)

### Supplies

<b>Toner</b>	<b>Yield (prints/bottle)</b>
Black	30K
Cyan	30K
Magenta	30K
Yellow	30K
Waste Bottle	40K

For maximum performance and yield, we recommend using genuine Ricoh parts and supplies.

**RICOH**  
imagine. change.

[www.ricoh-usa.com](http://www.ricoh-usa.com)

Ricoh Americas Corporation, 70 Valley Stream Parkway, Malvern, PA 19355, 1-800-63-RICOH

Ricoh® and the Ricoh Logo are registered trademarks of Ricoh Company, Ltd. All other trademarks are the property of their respective owners. ©2013 Ricoh Americas Corporation. All rights reserved. The content of this document, and the appearance, features and specifications of Ricoh products and services are subject to change from time to time without notice. Products are shown with optional features. While care has been taken to ensure the accuracy of this information, Ricoh makes no representation or warranties about the accuracy, completeness or adequacy of the information contained herein, and shall not be liable for any errors or omissions in these materials. Actual results will vary depending upon use of the products and services, and the conditions and factors affecting performance. The only warranties for Ricoh products and services are as set forth in the express warranty statements accompanying them.

