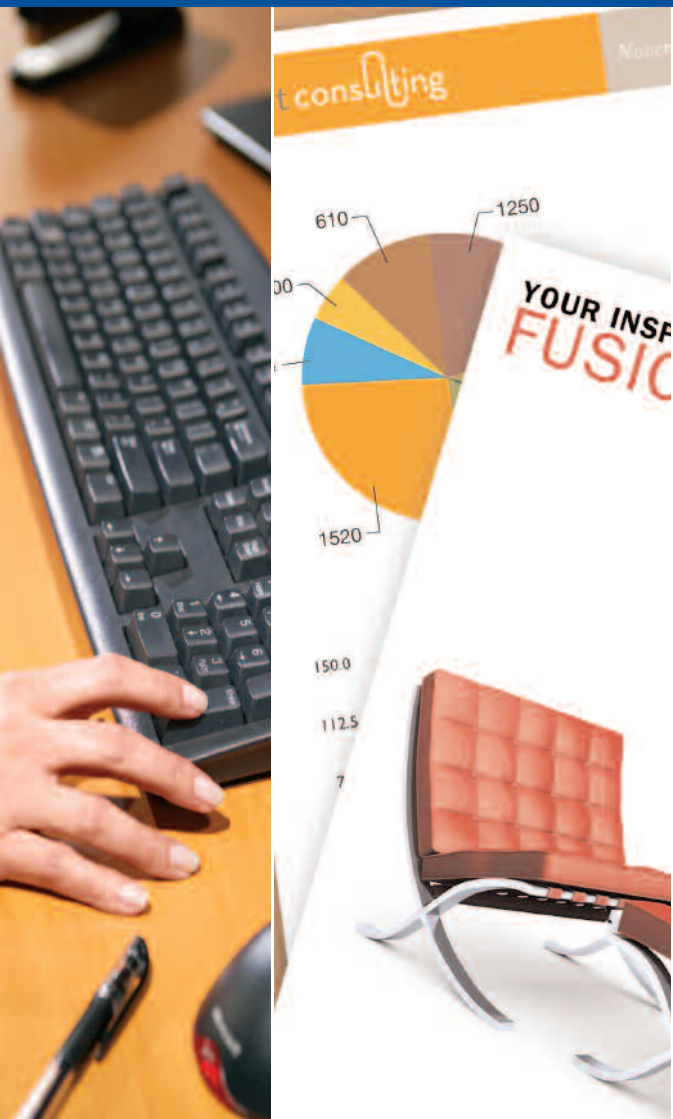




# C9120/C9125

Color Digital Imaging System

EASY > POWERFUL > CONVENIENT > EFFICIENT > **CAPABLE >**



**Elevate the output of  
your entire enterprise.**

## Attention-grabbing color and efficient black-and-white in one compact system

Today, organizations run lean and employees are expected to be smart, fast and versatile. The same holds true for MFPs. The SAVIN® C9120/ C9125 gives you all of that—and more. Powerful management tools make it easy to build and maintain highly productive workflows to streamline your document-related processes. Plus, a host of physical and logical security features give you multiple ways to protect your documents and your data. Exceptional performance from features such as internal finishing makes it a perfect system for centralized printing environments—so you can get rid of the hassle and expense of multiple personal printers and produce professional quality documents in-house.



Access workflow tools, program jobs or select distribution destinations with the easy-to-use full-color LCD Control Panel.

### Smart System, Sustained Savings

The combination of timesaving technology and proven reliability all add up to an exceptionally low total cost of ownership.

- Keep every job on the fast track with reliable print speeds of up to 25 pages per minute.

- Use the productive duplexing feature to print two-sided documents. Get the double advantage of greatly reduced paper costs and more efficient document filing.

# C9120/C9125 Color Digital Imaging System

**EASY > POWERFUL > CONVENIENT > EFFICIENT > CAPABLE >**

- Use less power without changing workflow. The innovative new color Quick Start-up (QSU) fusing system heats up quickly, using less electricity to do the same work and allows faster recovery time of less than 10 seconds from sleep mode where it only consumes 1 watt. All this leads to one of the lowest Typical Electricity Consumption (TEC) values in the industry.

## Simplify Every Job for End-Users

Every task, from advanced scanning capabilities to paper replenishment, is fast and easy. End-users spend less time creating and managing documents and more time focusing on what they do best—helping you grow your business.

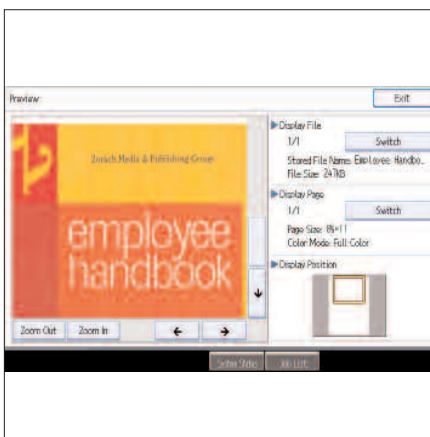
- Conserve valuable office space with a compact system that can be configured to meet your specific needs. You can even add in-line finishing capabilities with just a minimal increase to the system's footprint.
- Manage simple tasks or complex jobs easily with the 8.5" full-color LCD display. The intuitive display allows users to preview stored documents for accuracy prior to printing—and view animated guidance for operational assistance.
- Replenish paper and supply items quickly with a user-friendly design that includes overhand/underhand grips on paper trays and simplified, single-handed toner replacement.

## True Simplicity Meets Real Power

The Savin C9120/C9125 offers the intelligence and processing power you need for fast, efficient and affordable network printing.

- Complete jobs of all sizes faster and easier with a 600 MHz processor, 1.5 GB RAM and a 160 GB Hard Disk Drive.
- Streamline and simplify print jobs with icon-driven Savin one-click, preset PCL6/PS3 user interface drivers as well as XPS and optional genuine Adobe® PostScript®3™ drivers.
- Build a powerful, reliable network of Savin's C9120/C9125 with seamless integration for Windows, Macintosh, UNIX, AS/400 and other environments. Standard 10Base-T/100Base-TX Ethernet, USB 2.0 and SD Slot interfaces, as well as optional Gigabit Ethernet and wireless connectivity, are also available.

## Scan Preview



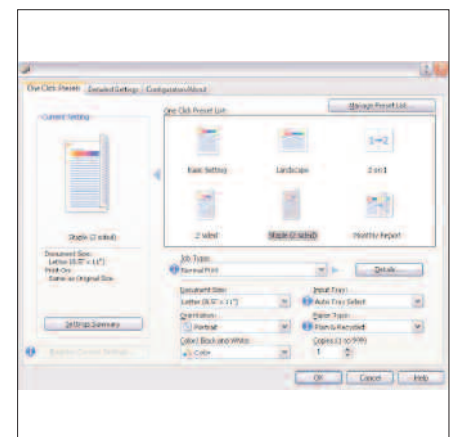
Scan a document and preview it on the convenient LCD color display panel before sending it to your pre-selected destination.

## Mobile Printing



Print from mobile devices to HotSpot Printers. Simply forward e-mails from PDAs or Internet-enabled cell phones, with or without attachments, to the printer's e-mail address. No drivers required!

## One-Click User Interface



Create one-click, preset graphical icons to repeat a particular job at any time—without having to reprogram the setup.

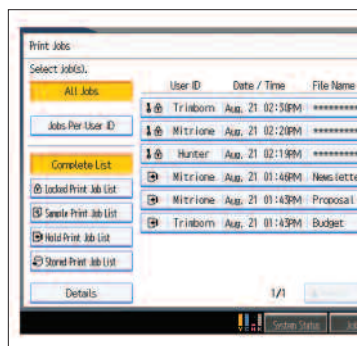


## True Productivity in a Compact Package

The **Internal Shift-Sort Tray (optional)** separates finished sets for easy pickup and delivery.



Create professionally finished documents completely in-house with the **500-Sheet Internal Finisher** and optional 2 & 3-hole punching.



**Locked (Secure) Print** lets users delay document printing until they enter a password at the device.



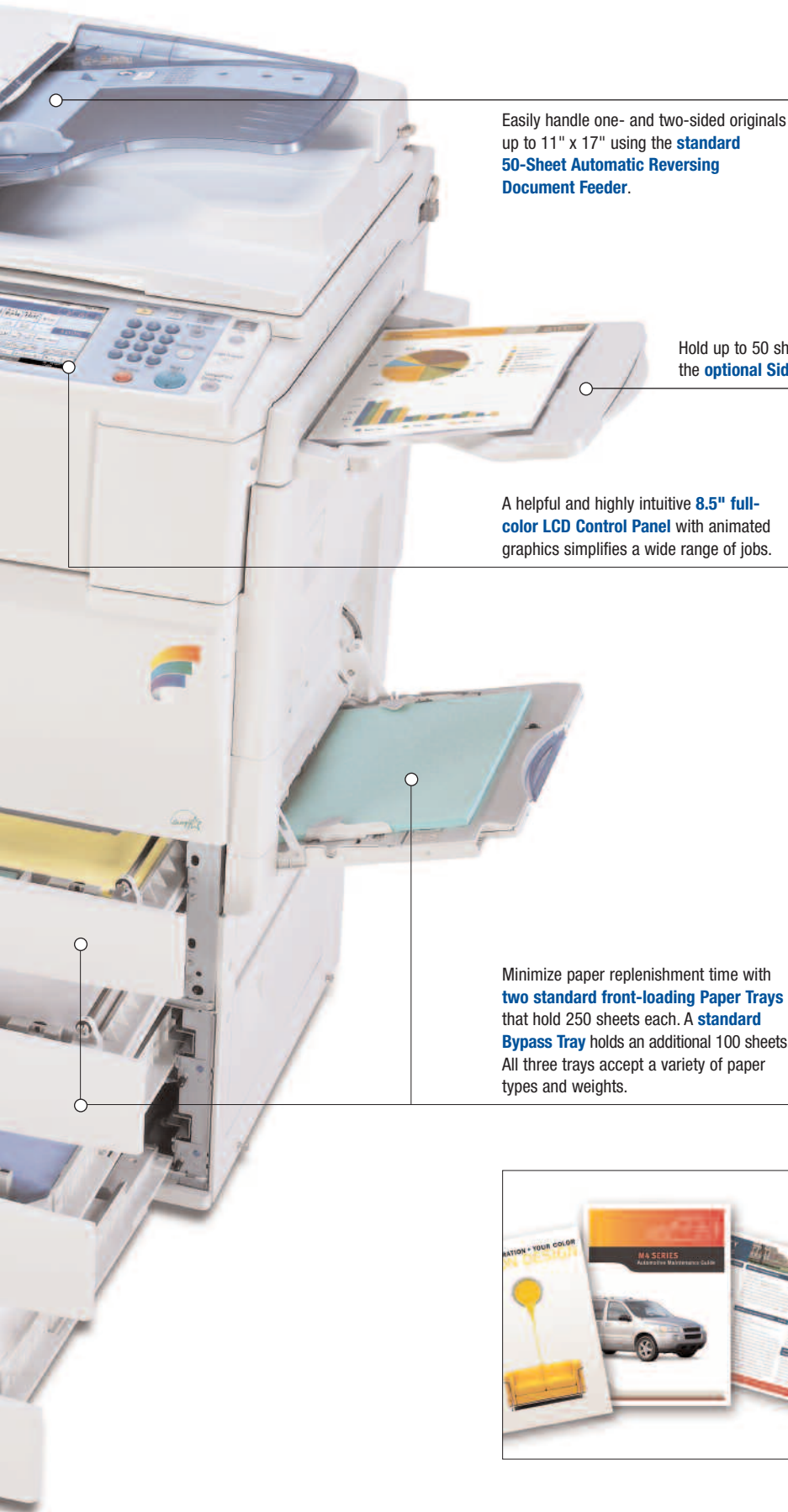
Load scanned documents onto portable media using Scan-to-Media capabilities with the **USB/SD card slot (optional)**. Print TIFF, PDF or JPEG files from the removable media.

Choose the **1 x 500-Sheet Paper Bank (optional)** or a larger **2 x 500-Sheet Paper Bank (optional/shown)** which boosts paper capacity to 1,600 sheets. Up to five different paper sizes and orientations can be loaded for maximum flexibility.



# C9120/C9125 Color Digital Imaging System

EASY > POWERFUL > CONVENIENT > EFFICIENT > CAPABLE >



Easily handle one- and two-sided originals up to 11" x 17" using the **standard 50-Sheet Automatic Reversing Document Feeder**.

Hold up to 50 sheets with the **optional Side Tray**.

A helpful and highly intuitive **8.5" full-color LCD Control Panel** with animated graphics simplifies a wide range of jobs.

Minimize paper replenishment time with **two standard front-loading Paper Trays** that hold 250 sheets each. A **standard Bypass Tray** holds an additional 100 sheets. All three trays accept a variety of paper types and weights.



Dramatically reduce paper usage with **standard automatic two-sided (duplex) output**.



Savin's energy-saving **PxP™ toner** produces brilliant color output for your business documents.



Store up to 2,000 documents with a **standard Document Server**—a highly secure, virtual filing cabinet. Frequently used documents can be re-printed, re-faxed and re-distributed quickly and easily.

## Sophisticated Features, Smart Investment

The Savin C9120/C9125 offers powerful features that are typically found on larger, more expensive systems. It's an affordable way to energize your document-related processes.

- Send scanned documents to any e-mail address at the touch of a key with Scan-to-E-mail. No dedicated servers or additional software are required.
- Save documents on a shared server for fast, easy distribution with a productive Scan-to-FTP feature. You can also send scanned documents to a local server for intelligent archiving with Scan-to-Folder.
- Scan or print documents directly from a USB memory device or SD memory card with Scan-to-Media. This makes document portability fast and easy.
- Reduce the file size of color documents with an easy-to-use High Compression JPEG 2000 PDF feature. This resolves the issue of large documents slowing down your network and the printing process.

## Run Fast, Finish Strong

The system may be compact, but the paper handling is incredibly strong. Load the system with a wide variety of paper stocks and sizes, then use the internal finishing features to produce documents completely in-house.

- Produce professional and expertly finished documents without taking up excessive floor space. Both systems offer an internal finisher, which offers automatic stapling and optional 2- or 3-hole punching.
- Create spreadsheets, newsletters or other large documents on 11" x 17" paper using the copy or print functions.
- Push workgroup productivity to new heights with an ample paper supply. The system offers a total paper capacity up to 1,600 sheets, a standard 50-Sheet Automatic Reversing Document Feeder and up to five paper sources.
- Produce full-color or black & white postcards, posters and report covers on a variety of thick or unique paper stocks. Print onto envelopes directly from the envelope feeder tray or bypass tray.

## Discover True System Versatility

The multi-functional power of the Savin C9120/C9125 allows small offices and workgroups to add full-color capabilities and replace up to four separate devices with one versatile solution.

- Send fax documents quickly and easily with an optional Super G3 fax modem and 2,000 Quick Dials.
- Cut costs with advanced LAN, IP (T.38) and Internet (T.37) faxing technologies.

## Simplified System Management

- Monitor and manage the Savin C9120/C9125 from a remote location using advanced Web tools. Administrators can view system details, settings and supply status from a standard Web browser.
- Optimize your most critical workflows with the Embedded Software Architecture™, a Java-compatible Software Development Kit (SDK) that makes it easy to create unique system and network management applications.

### Scan-to-URL



Minimize network congestion and transmit files more efficiently with Scan-to-URL. This feature stores documents on the Hard Disk Drive and allows recipients to view and download them from any Web browser.

### Fax Forwarding



Forward incoming faxes to an e-mail address or folder, so users can receive important documents no matter where they are.

# C9120/C9125 Color Digital Imaging System

**EASY > POWERFUL > CONVENIENT > EFFICIENT > CAPABLE >**

## Get Connected to Powerful Workflow Capabilities

The Savin C9120/C9125 are loaded with time-saving features that give end-users entirely new capabilities that allow them to work faster, smarter and more efficiently.

- Create full-color or black & white documents from a PDF or JPEG attachment by sending an e-mail directly to the system using the innovative Mail-to-Print feature.
- Save time and minimize network traffic with PDF Direct Print, a convenient capability that allows end-users to print PDFs without having to open them in Adobe® Acrobat®.
- Charge specific print jobs to specific clients, workgroups or job numbers using the advanced but easy Classification Code feature.
- Connect any PictBridge®-enabled digital camera to the system and print brilliant, full-color photos in seconds.

## Savin Managed Document Services

Savin's Managed Document Services (MDS) is a powerful way to streamline your document management environment. MDS enables control of output-related costs and assets and optimizes the fleet. Through on-site and off-site services, MDS improves workflow, productivity and end-user experiences.

- Control expenses with the Savin C9120/C9125, which provide a powerful combination of high-productivity, long-lasting reliability and low total cost of ownership (TCO).
- Consolidate copying, printing, scanning and document management into a single device, with a smaller footprint and one set of consumables.
- Place the right device for the right application with these systems and others—all part of our extensive line of Savin products.

## Protect Documents, Data and Passwords

Select the following security features of the Savin C9120/C9125 to help safeguard printed and electronic documents.

- Provide strong lines of defense for sensitive information with the standard DataOverwriteSecurity System (DOSS). This robust security feature automatically overwrites the hard drive after each job. Standard HDD encryption lets you protect valuable data, even if the hard drive is stolen.
- Guard against unauthorized document viewing with encrypted PDF transmission. This feature encrypts PDF data prior to transmission via Scan-to-E-mail and Scan-to-Folder.
- Protect e-mail transmissions with advanced encryption technology and defend against unauthorized network interception with S/MIME (Secure/Multipurpose Internet Mail Extensions).
- Print color documents without worrying about costly overuse. Several levels of authentication let you confirm user identity and control access to color, scanning and other functions.

## Quota Setting

**Print Volume Use Limitation**

OK Cancel

**Machine Action When Limit is Reached**

Machine Action When Limit is Reached : Stop Job

**Print Volume Use Limitation: Unit Count Setting**

**Copier:**

Color : 200 (0-200)

Black & White : 1 (0-200)

**Printer:**

Color : 10 (0-200)

Black & White : 1 (0-200)

OK Cancel

Set output limits and control costs on an individual or group level with the Quota Setting feature.

## The Total Green Office Solution

Savin continues its long-standing commitment to developing office solutions with environmentally friendly and superior energy- and supply-saving features, without compromising productivity.





### GENERAL SPECIFICATIONS

Printing Process	Dry Electrostatic Transfer with Dry Dual Component Magnetic Brush Development System; 4-Drum Method
Output Speed (Copy/Print)	C9120: 20-ppm BW & Full-Color; C9125: 25-ppm BW & Full-Color
Warm-Up Time	Less than 22 seconds (from Power On) Less than 10 seconds (from Sleep Mode)
First Copy Time	Full-Color: 9.2 seconds; BW: 6.4 seconds
Copy Resolution	600 x 600 dpi
Document Feeder (Standard)	Automatic Reversing Document Feeder (ARDF)
Original Capacity	50 sheets
Paper Size	5.5" x 8.5" to 11" x 17"
Paper Weight	Simplex: 11 lb. to 34 lb. Bond (40 – 128 g/m <sup>2</sup> ); Duplex: 14 lb. to 28 lb. Bond (52 – 105 g/m <sup>2</sup> )
Exposure Glass	Up to 11" x 17"
Quantity Indicator	Up to 999 copies
Copy Size	Up to 11" x 17"
Input Capacity	Standard: 2 x 250 sheets + 100-Sheet Bypass Tray; Maximum: 1,600 sheets
Output Capacity	Standard: 500 sheets (Letter); 250 sheets (Legal/Ledger); Maximum: 650 sheets (with 500-Sheet std. Exit Tray, 50-Sheet Side Tray and 100-Sheet One-Bin Tray)
Paper Sizes	Standard Tray 1 and Tray 2: 7.25" x 10.5" to 11" x 17"; Custom Sizes (Tray 1 and Tray 2): 7.17" x 5.83" (182 x 148 mm) to 11.69" x 17" (297 x 432 mm); Bypass Tray: 5.83" x 3.55" to 23.62" x 12" (305 x 600 mm)
Paper Weights	Standard Tray #1: 16 – 68 lb. Bond/140 lb. Index (60 – 256 g/m <sup>2</sup> ); Standard Tray #2: 16 – 45 lb. Bond/90 lb. Index (60 – 169 g/m <sup>2</sup> ); Bypass Tray: 14 – 68 lb. Bond/140 lb. Index (52 – 256 g/m <sup>2</sup> ); Duplex Unit: 16 – 28 lb. Bond (60 – 105 g/m <sup>2</sup> )
Paper Types	Plain paper, laser printer qualified transparencies, labels and envelopes
Auto Duplex	Standard
Zoom Preset	25% – 400% in 1% increments; 93%, 85%, 78%, 73%, 65%, 50%, 25% and 400%, 200%, 155%, 129%, 121%
Reduction and Enlargement Ratios	23.2" x 26.7" x 33.3" (587 x 676 x 845 mm)
Dimensions (WxDxH)	220.5 lbs. (100 kg)
Weight	120V, 60Hz, 12A
Power Requirements	1600 Watts or less
Power Consumption	C9120: 1.00kWh
TEC Value*	C9125: 1.27kWh

\*Tested in accordance with US EPA TEC Test Procedure.

### OTHER COPIER FEATURES

Auto Color Selection (ACS), Auto/Manual Density Control, Copy Mode – Photo Type Selection (Printed, Glossy, & Copied Photo), Combine Mode, Shift/Erase/Margin, Cover/Slip/Chapter Sheets, Color Creation Modes, Image Creation Modes, Stamps/Numbering, Color Adjustment, Image Adjustment, Image Rotation, Job Program (10), User Codes (500), Job Preset (8), Sample Copy, Batch Mode, Quota Settings & SADF Mode

### SECURITY SPECIFICATIONS

**Standard DataOverwriteSecurity Unit (DOSS) Type I** – Security feature that overwrites latent data on the system's hard drive after copy, scan, fax and print jobs.

**Standard HDD Encryption Unit Type A** – This function encrypts the system's hard drive using 256 bits (AES) to protect against data theft.

**Other Security Features** – SNMP v3 and Data Encryption (password/address book); Locked (Secure) Print; User Codes; Basic Authentication; WPA (Wi-Fi Protect Access Support); IPsec Communication; Windows/LDAP/Kerberos Authentication; 802.1x Wired Authentication; SSL Communication; SSL over SMTP; S/MIME; Network Protocol On/Off; IP Filtering (Access Control) and more

### PRINT CONTROLLER (STANDARD)

CPU	Mobile Intel Celeron Processor @ 600MHz
Memory	1.5 GB RAM (Maximum) & 160 GB HDD Standard (Shared)

### Max. Print Speed

C9120: 20-ppm BW & Full-Color; C9125: 25-ppm BW & Full-Color

Page Description Languages

Max. Print Resolution

Standard Interfaces

Optional Interfaces

Network Protocols

Fonts for PCL

Fonts for PS3

Network Operating Systems

Utilities

For UNIX support, visit [www.savin.com/downloads](http://www.savin.com/downloads).

### OTHER PRINTER FEATURES

Sample/Hold/Stored and Locked Print, Classification Code, PANTONE® Color Palette, Black Over Print, CLP Simulation, PictBridge™ Support, WSD Printer, Bonjour Support

### SCANNER SPECIFICATIONS (STANDARD)

Scanner Resolution	From 100 to 600 dpi (1200 dpi for TWAIN); Default Setting: 200dpi
Scanning Speed	44-ippm BW; 44-ippm Full-Color (@200 dpi via ARDF)
Scan Area	Main Scan: 11.7" (297 mm), Sub Scan: 17" (432 mm)
Scan Size	Contact Glass: 11" x 17", 8.5" x 14", 8.5" x 11", 5.5" x 8.5"
Compression Method	BW: TIFF (MH, MR, MMR), Grayscale; Full-Color: JPEG
Scan Mode	Standard: BW Text/Line Art, BW Text, BW Text/Photo, BW Photo, BW Grayscale, FC Text/Photo, FC Photo
Scan-to Modes Supported	Scan-to-Email (with LDAP support); Scan-to-Folder (SMB/FTP/NCP); Scan-to-URL; Network TWAIN Scanning; Scan-to-Media (USB/SD, optional); WSD Scanner (for Vista)

### DOCUMENT SERVER SPECIFICATIONS

Capacity	160 GB (shared with other functions)
Max. Stored Documents	2,000 documents
Max. Pages per Document	1,000 pages
Max. Pages of all Stored Documents	6,000 Pages

### FACSIMILE SPECIFICATIONS (OPTIONAL)

#### Fax Option Type C2551

Type	ITU-T (CCITT) G3
Circuit	PSDN, PBX
Resolution	200 x 100 dpi, 200 x 200 dpi, 400 x 400 dpi (with optional SAF memory)
Modem Speed	33.6K – 2,400bps with Automatic Shift Down
Compression Method	MH, MR, MMR, JBIG
Transmission Speed	G3: Approx. 2 seconds/page (w/JBIG compression); G3: Approx. 3 seconds/page (w/MMR compression)
Scan Speed	40 pages/minute (Standard Mode); 38 pages/minute (Detail Mode); 20 pages/minute (Super Fine Mode)
Auto Dialing	2,000 Quick Dials, 100 Group Dials (200 locations each)
Memory Capacity	4 MB (approx. 320 pages); Maximum 28 MB (approx. 2,240 pages)
Additional Modes	Internet Fax (T.37), IP Fax (T.38), LAN Fax, Fax Forward to E-mail/Folder, LDAP Support, Detection of Misplaced Documents & Double Check Destination
Options	Handset Type 1018, Memory Unit Type B 32MB (SAF Memory)

### HARDWARE ACCESSORIES

#### Paper Feed Unit (PB3070)

Paper Capacity	500 sheets x 1 Tray
Paper Sizes	7.25" x 10.5" to 11" x 17"
Paper Weights	16 – 28 lb. Bond (60 – 105 g/m <sup>2</sup> )
Dimensions (WxDxH)	21.7" x 20.5" x 5.4" (550 x 520 x 137 mm)

The Caster Table is required with the 500 x 1 Paper Feed Unit (PB3070).

#### Paper Feed Unit (PB3030)¹

Paper Capacity	500 sheets x 2 Trays
Paper Sizes	7.25" x 10.5" to 11" x 17"
Paper Weights	16 – 28 lb. Bond (60 – 105 g/m <sup>2</sup> )
Dimensions (WxDxH)	21.7" x 20.5" x 10.7" (550 x 520 x 271 mm)

#### Cabinet Type FAC43¹

#### Envelope Feeder Tray (EF3010)

Paper Sizes	5.5" x 8.5" to 11" x 17" Com10, Monarch, C5, C6 DL Envelope
Paper Weight	14 – 68 lbs. Bond (60 – 256 g/m <sup>2</sup> )
Paper Capacity	250 sheets (8.5" x 11" to 11" x 17") 150 sheets (5.5" x 8.5") Approximately 40 envelopes (depending on envelope thickness/quality)

#### Internal 500-Sheet Finisher Type C2550

Paper Weights	14 – 34 lb. Bond (52 – 128 g/m <sup>2</sup> )
Stack Capacity	500 sheets (8.5" x 11") 250 sheets (8.5" x 14" or larger)
Staple Capacity	50 sheets (8.5" x 11") 30 sheets (8.5" x 14" or larger)

Staple Paper Sizes: 7.25" x 10.5" to 11" x 17" Landscape: Top Left Corner, Bottom Left Corner, 2-Top Sided, and 2-Left Sided; Portrait: Top Left Corner, Bottom Left Corner, 2-Top Sided, and 2-Left Sided

Staple Positions: 19.5" x 20.7" x 8.4" (495 x 525 x 214 mm)

2/3-Hole Punch Unit Option (PU3010NA) available for Internal Finisher.

#### Internal Shift-Sort Tray (SH3030)

Paper Sizes	5.5" x 8.5" to 12" x 18"
Paper Capacity	250 sheets
Paper Weights	14 – 68 lb. Bond/140 lb. Index (52 – 256 g/m <sup>2</sup> )
Dimensions (WxDxH)	16.9" x 18.8" x 4.2" (431 x 477.5 x 107 mm)

Internal Shift-Sort and/or Inner One-Bin Tray cannot be installed with the 500-Sheet Internal Finisher.

#### Inner One-Bin Tray (BN3060)

Paper Sizes	5.5" x 8.5" to 11" x 17"
Bin Capacity	100 sheets
Paper Weights	16 – 28 lb. Bond (60 – 105 g/m <sup>2</sup> )
Dimensions (WxDxH)	16.9" x 19.6" x 4.4" (429 x 497 x 113 mm)

#### Side Tray Type C2550

Paper Sizes	5.5" x 8.5" to 11" x 17"
Paper Capacity	50 sheets
Paper Weights	16 – 28 lb. Bond (60 – 105 g/m <sup>2</sup> )
Dimensions (WxDxH)	18.9" x 18.9" x 6.7" (480 x 480 x 170 mm)

¹Please note either the Cabinet Stand or one of the paper options must be installed.

### ADDITIONAL ACCESSORIES

Caster Table Type B, PostScript3 Unit Type C2551, Camera Direct Print Card Type I, Key Counter Bracket Type H, File Format Converter Type E, Optional Counter Interface Unit Type A, USB 2.0/SD Slot Type G, Handset Type 1018, IEEE802.11 a/b/g Wireless Interface Type J, HotSpot Printing, and more

### CONSUMABLES\*

Black Toner Cartridge	10K
Cyan, Magenta & Yellow Toner Cartridge	5.5K or 9.5K

\*Toner yields based on 5% coverage.

For maximum performance and yield, we recommend using genuine Savin parts and supplies.

