

Canon



CORPORATE SOLUTIONS



 **Color
imagerUNNER®**
C 4 0 8 0 SERIES

meap
POWERED BY I

CORPORATE SOLUTIONS

INTRODUCING A NEW ERA OF COLOR – THE CANON COLOR imageRUNNER C4080 SERIES

Unleash power, speed, flexibility, and connectivity in your office

With robust functionality, advanced print engine technology, superior paper-handling, and professional finishing options, the Color imageRUNNER C4080 Series models are the ideal multifunction devices for your office.

The Color imageRUNNER C4080 Series delivers output at speeds of up to 40 pages per minute (letter) in monochrome and up to 36 ppm (letter) in brilliant color. Fast print speeds and warm-up times are achieved through Canon's new Twin-Belt Fusing Technology. And at true 1200 dpi, every word will appear with absolute clarity with the highly precise four-beam laser scanner.

A fast and reliable 100-sheet Duplexing Automatic Document Feeder (DADF) enables you to efficiently scan/copy high-volume documents at up to 70 impressions per minute (ipm) at 300 dpi in black and white and color.

Two versions of the Color imageRUNNER C4080 Series are available—an “i” model and a “Base” model. The “i” model, designed for general office environments, is bundled with features providing out-of-the-box business productivity. The “Base” model is highly customizable and offers a selection of options to best fit demanding color environments.

The Color imageRUNNER C4080 Series provides memory capacity of up to 1.5GB, an 80GB hard drive, and Canon's innovative MEAP® (Multifunctional Embedded Application Platform) technology for customized workflows. With high-capacity finishing options, professional output is available for any project.

When it comes to connectivity, the Color imageRUNNER C4080 Series enables efficient document distribution with Canon's Color Universal Send technology. Standard on all models, it provides comprehensive dissemination of information simultaneously to multiple locations across the hall or around the globe.



COLOR imageRUNNER C4080 SERIES OVERVIEW

Productivity far beyond the norm



EFFICIENCY

Canon's new imageCHIP architecture provides increased speed, power, and functionality.



HIGH QUALITY AND PRODUCTIVITY

Copy, scan, and print documents faster, and output them with professional finishing options.



SUPERIOR COMMUNICATION

Create and store documents with powerful tools and distribute them easily with Color Universal Send technology.



INTERNET-READY

Collaborate on your documents via the Internet or browse and print Web content right from the device.



POWERFUL IMAGING

Choose options and software for increased productivity in corporate or professional color environments.



USER-FRIENDLY

Easy-to-use color display panel and interactive help menus for users, and advanced tools for administrators.



SECURITY AND ACCESSIBILITY

Advanced security features protect your data, and accessibility options ensure access to all users.

Function	Color imageRUNNER C4080	Color imageRUNNER C4080i
Copy	Standard	
Mail Box	Standard	
Print	Optional:* UFR II, PCL, PostScript Emulation,** Adobe PostScript® 3™	Standard: UFR II, PCL Optional: PostScript Emulation**
Scan	Standard: Color Network ScanGear	
Color Universal Send	Standard: Color Universal Send	
	Optional: Universal Send PDF Advanced Feature Set	Standard: Universal Send PDF Advanced Feature Set
	Optional: Universal Send PDF Security Feature Set	Standard: Universal Send PDF Security Feature Set
Super G3 Fax	Optional: Single-Line or Multi-Line	
Web Access	Optional	
MEAP	Standard	

* Choose one of three print controller options: UFR II/PCL Printer Kit-N1, imagePASS-H1, or ColorPASS-GX100.

** PS Printer Kit-N1 option requires the UFR II/PCL Printer Kit-N1; also requires 512MB RAM.



THE ANATOMY OF AN EFFICIENT PERFORMER

Canon imageCHIP System Architecture

- imageCHIP architecture provides more speed and power for greater productivity
- Up to 1.5GB RAM and 80GB HDD
- Dedicated dual processor design
- Mail Box: local archival solution
- Remote UI device management

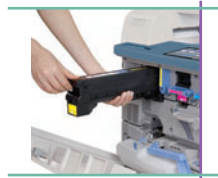


Robust Speed

- Up to 70-ipm high-speed color and black-and-white scanning
- Standard 100-sheet Duplexing Automatic Feeder
- 40 ppm (black and white); 36 ppm (color)

Reliable Consumables and Supplies

- Durable Canon OPC Drum
- Easy-to-replace toner cartridges
- Oil-free color S-toners



Accessibility Options

- Voice Guidance Kit
- Remote Operator's Software Kit
- ADF Access Handle
- Braille Label Kit



Advanced Finishing Options

- Three types of finishers
- Corner, double, saddle-stitch
 - Extensive stacking capacity
- Hole-punching
- Two or three holes

Superior Paper-Handling

- Up to 5,000-sheet paper capacity
- 100-sheet Bypass Tray
- Up to 140 lb. Index media weights
- Up to 12" x 18" media sizes

Finisher-X1



Finisher-W1



Saddle Finisher-W2



Puncher Unit-AH1



Cassette Feeding Unit-Z1



Plain Pedestal-E1



Paper Deck-Y1





HIGH QUALITY AND PRODUCTIVITY

Uncompromising business performance

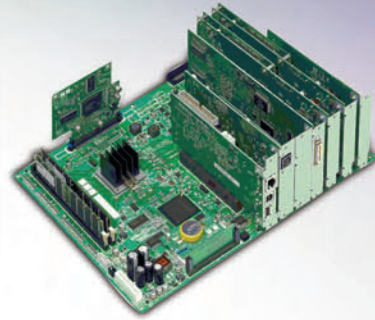
NEW-GENERATION IMAGE PROCESSING

The Color imageRUNNER C4080 Series is powered by Canon's new evolutionary imageCHIP system architecture. This not only enables simultaneous copying, printing, scanning, sending, and faxing, but it will change the way you think about using color in your office.

DIGITAL DYNAMICS

Adding digital data to copies and prints is easy and powerful. Create ad hoc watermarks, select preset stamps, add page and copy set numbering, and/or date stamping to any output with control over size, position, colors, and density. You can also embed secure watermarks that appear when copies are made to help prevent security leaks of confidential information.

imageCHIP System Architecture



COMPLEX JOBS MADE SIMPLE

The Color imageRUNNER C4080 Series makes the production of complicated documents manageable. Combine different sets of documents into one with Job Block Combination. Each set can be configured to run with unique settings, such as paper type, finishing, color, and more, then reproduced or stored as a new document in a Mail Box.

BRILLIANT BUSINESS COLOR

For general office environments, the Color imageRUNNER C4080 Series efficiently tackles print tasks for Microsoft® Office applications. It supports Canon's UFR II (Ultra Fast Rendering) and PCL, as well as an option for PostScript 3™ emulation.

FASTER COPYING

Copy operations are greatly simplified through the choice of two user interfaces. The standard copy display simplifies operations for novice users, while an Express Copy menu provides advanced users quick access to various copying modes on a single screen.

Secure Watermark



Original document with hidden text and background color

Hidden text appears on copies that are made

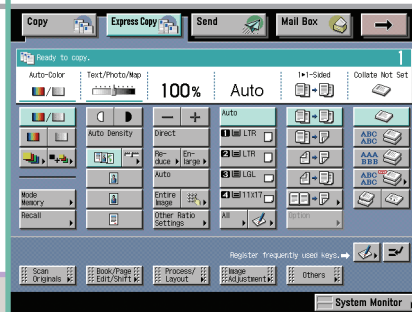
THE PERFECT FINISHING TOUCHES

The Color imageRUNNER C4080 Series offers professional finishing options that collate, staple, hole-punch, or saddle-stitch to create impressive documents efficiently. And with Automatic Creep Correction, each page in your large booklets will be perfectly positioned.

Saddle Finisher-W2



Express Copy Screen



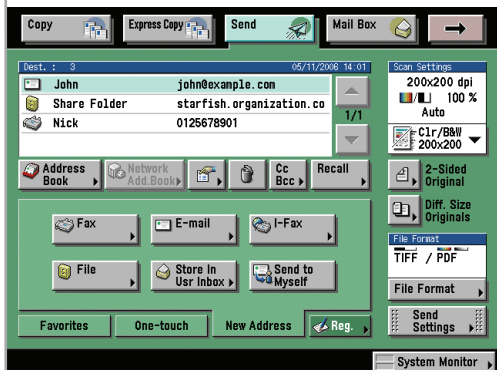


SUPERIOR COMMUNICATION

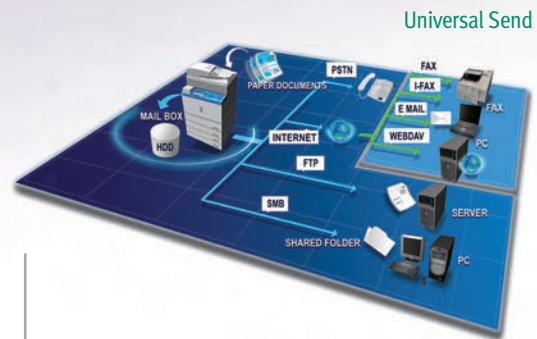
Enhance your digital world with Color Universal Send

With Canon's proprietary Universal Send technology, the Color imageRUNNER C4080 Series enables you to distribute scanned documents to multiple network destinations—such as e-mail and Internet fax addresses, local Mail Boxes, fax, network folders, and document management systems—in one simple operation. Quickly and easily send documents to user addresses in a local Address Book, look up users from multiple LDAP servers on your network, or manually enter a destination. When Single Sign-On (SSO) or Simple Device Log-in (SDL) authentication modes are used, a new timesaving feature enables you to send documents to yourself in a single click.

Color Universal Send offers powerful options to master creation, distribution, and archiving of your documents. Universal Send PDF Advanced Features (standard on the "i" model) provide additional functionality such as PDF High Compression, Trace & Smooth PDF, and Searchable PDF modes.



Send Main Menu



Universal Send

FILE SIZE COMPARISON

Original: Letter-Sized Hard Copy (Color Graphics with Text)



Canon's PDF (Compact)
300-dpi Color Scan
File Size: **150 KB**

PDF File Format
300-dpi Color Scan
File Size: **2 MB**

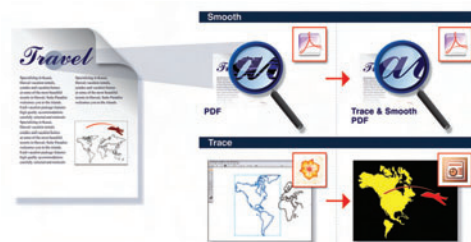
PDF File Format
300-dpi B/W Scan
File Size: **390 KB**

PDF High Compression Mode

PDF HIGH COMPRESSION TECHNOLOGY

To reduce network bandwidth requirements when sending color documents, Canon's proprietary PDF High Compression Mode can significantly reduce the size of PDF files. And with Canon's exclusive Trace & Smooth PDF feature, text in PDF files can be converted to outlines for sharper edges and increased readability. The outline data can also be manipulated in Adobe Illustrator® to create elements for other documents.

Trace & Smooth PDF



CREATING SEARCHABLE PDF DOCUMENTS

After scanning for PDF creation, the text is then embedded within the file for extraction or keyword searches with the Searchable PDF feature. This allows you to easily scan and convert scanned documents into your electronic workflow.



HIGH-VOLUME FAX CAPABILITY

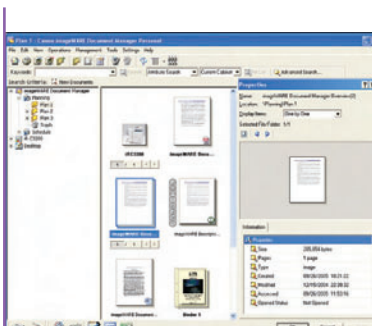
The Color imageRUNNER C4080 Series supports the option to add a single- or multi-line Super G3 fax module to further extend the capabilities of Color Universal Send. Incoming faxes can also be automatically routed to other devices, destinations, or users with the Job Forwarding feature for superior workflow management.

ADVANCED WORKGROUP COLLABORATION

The Color imageRUNNER C4080 Series includes internal Mail Boxes for document storage and print-on-demand applications. Documents can be combined and printed as a single job or sent to multiple destinations in a variety of formats. For files that are too large for e-mail or require a large distribution list, the URL Send feature can e-mail a link to notify recipients that they can remotely preview via PC and, if necessary, print from the device.

DESKTOP INTEGRATION

The Color imageRUNNER C4080 Series is designed to work seamlessly with Canon's imageWARE Document Manager Personal Version 4 as a total end-to-end document solution. You can capture, archive, retrieve, and manipulate documents within the imageRUNNER devices' Mail Boxes right from your desktop computer, seamlessly integrating your workspace with the device.



imageWARE Document Manager Personal Version 4

INTERNET-READY

Maximize the power of the Web

The Color imageRUNNER C4080 Series provides more ways to share information with the world beyond your office than ever before.

WEB BROWSING AND PRINTING

With the industry's first Web Access Software option, you can browse the Web or corporate intranets directly from the device's color touch-panel. The Web Access function enables you to print Web pages or PDF files from the Internet or your network, even when you don't have access to a computer.*

WEB-BASED DOCUMENT COLLABORATION

Color Universal Send supports the Web-based Distributed Authoring and Versioning (WebDAV) protocol, enabling you to securely send documents to a shared storage service over the Internet. Collaborate on documents with others, whether they are in the office, on the road, or at home for increased productivity.



Web Access Software

* When configured on the "Base" model, requires UFR II/PCL Printer Kit-N1 if printing Web pages; requires PS Printer Kit-N1 on "Base" and "i" models if printing PDF files.



POWERFUL IMAGING

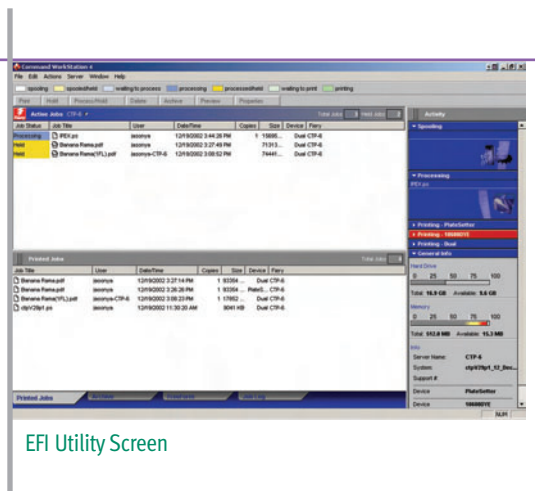
Flexible color productivity for your office

Canon offers flexible print controller options developed for the Color imageRUNNER C4080 “Base” model. The ColorPASS-GX100 and imagePASS-H1 controllers increase productivity and color quality for corporate and professional color environments.

imagePASS-H1 CONTROLLER

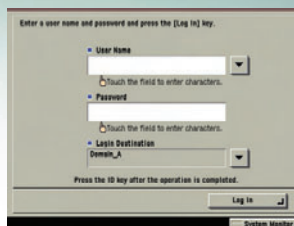
The imagePASS-H1 is a high-performance embedded controller designed to handle color-intensive multi-user environments. Featuring a dedicated Intel® Celeron® M 1.5GHz processor, the imagePASS-H1 provides improved color matching, genuine Adobe Postscript 3 support, and PCL 5c emulation.

imagePASS-H1



ColorPASS-GX100 CONTROLLER

The ColorPASS-GX100 is a powerful external server which caters to graphic-intensive users and production environments. Driven by an Intel Pentium® 4 3.2GHz processor, the ColorPASS-GX100 controller supports demanding color image and high-volume processing.



Single Sign-On Log-In Screen

Control Panel



USER-FRIENDLY

Simplicity for users

For users, the Color imageRUNNER C4080 Series facilitates operations with its easy-to-read full-color touch panel, interactive help menus, insightful documentation and tutorials, and remote operation capabilities. Streamlined administration is achieved through powerful features for user access and privileges, and device management.

SUPPORT TOOLS FOR OPERATORS

Whether you're a beginner or an advanced user, the Color imageRUNNER C4080 Series is easy to navigate. An Easy Operation Guide provides step-by-step instructions on how to operate the device's main functions. And the [Help] hard key on the device provides instructions and explanations for operation. User tutorials in Macromedia® Flash® format are also available and can be distributed through your network or corporate intranet for smooth deployment.

REMOTE UI (USER INTERFACE)

The Color imageRUNNER C4080 Series can be accessed through a Web browser from any computer on the network. The Remote UI utility provides the ability to check the status of the device, track the progress of current jobs, monitor paper and toner levels, administer the Mail Box, and edit the Address Book.

...and for administrators

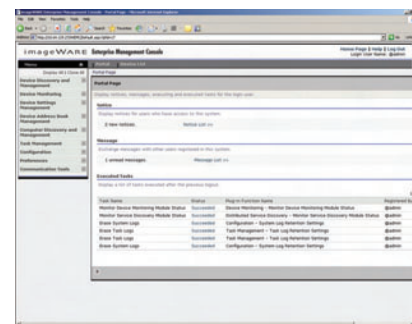
FLEXIBLE USER ADMINISTRATION

Administrators have a choice of methods to control access and privileges to the Color imageRUNNER C4080 Series devices. Authentication schemes include Single Sign-On (SSO) using network accounts, Simple Device Log-In (SDL), and Department ID Mode with optional Control Card/Card Reader system.

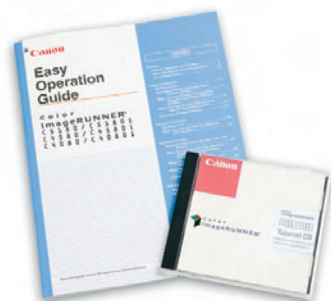
COMPREHENSIVE DEVICE MANAGEMENT

Canon's imageWARE Enterprise Management Console (EMC) is a Web-based utility that facilitates centralized management of networked devices. Built upon an extensible framework, it enables remote management of device settings, discovery of new devices using automated tasks, and device error notifications via e-mail. Administrators can also easily replicate settings and Address Books across multiple devices through the Device Information Delivery Function (DIDF), as well as push-print drivers to PC-based desktop computers for rapid deployment.

Help Key



imageWARE Enterprise Management Console



Easy Operation Guide and Tutorial CD



SECURITY AND ACCESSIBILITY

DEVICE AND DATA SECURITY

The Color imageRUNNER C4080 Series includes features to help you guard against unauthorized access to the device and its data. In addition to user-level authentication, it can also restrict access by network port or IP/MAC address. The Encrypted Secured Print feature can encrypt your documents before they are sent over the network and decrypt and print only after the correct password is entered on the device. With Canon's imageRUNNER Security option, data on the device's drive can be secured with 168-bit encryption technology and set to automatically overwrite traces of previously stored data.

SECURE DIGITAL DOCUMENTS

The Universal Send PDF Security Feature Set provides advanced options to prevent impersonation, unauthorized alteration, or interception of your documents. With Digital Device Signature mode, recipients can be assured of the originating device of documents. You can also protect the contents of your documents with the Encrypted PDF feature, and secure them with a password to restrict access, editing, and printing. The Digital User Signature option enables verification of your identity to recipients by adding your digital certificate to your documents.

Document Security

Encrypted Secured Print
Watermark/Secure Watermark
Copy Set Numbering
Encrypted PDF
FAX Forwarding
FAX Destination Confirmation

Mail Server Security

POP Authentication before SMTP
SMTP Authentication

Network Security

MAC Address Filtering
IP Address Filtering
SSL Encryption
Network Application On/Off
USB Block
Destination Restriction



HDD Security

Security Kit (optional)
• HDD Data Erase
• HDD Data Encryption
• Job Logs Concealing
HDD Format
Mail Box Password Protection



Device Access Security

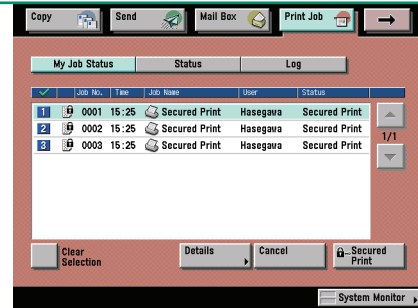
Department ID (up to 1000 IDs)
User Authentication (SDL/SSO)
Control Card/Card Reader system (optional)

Device Management

DIDF (Device Information Delivery Function)
Key Switch Unit

Device Management and Security Overview

Encrypted Secured Print



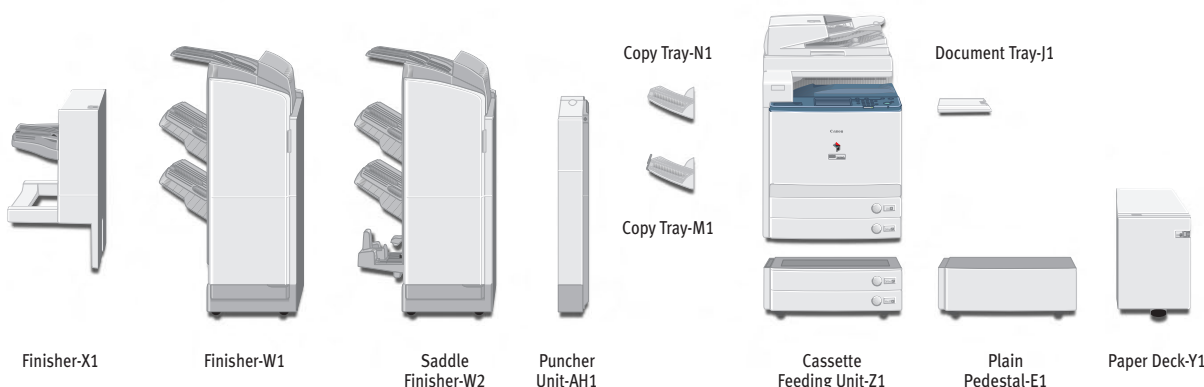
Digital Signature PDF



ACCESSIBILITY

Canon offers solutions that go even further to provide easy access for every authorized user of the Color imageRUNNER device. The Remote Operator's Software option provides the capability to operate the device from any networked computer by emulating the device's control panel. Users with visual impairments can use the Voice Guidance option, which provides speech synthesis for programming and job confirmation during the copy process. The Braille Label option improves access to copy and print functions by adding transparent labels to hard keys on the device.

SPECIFICATIONS



Finisher-X1

Finisher-W1

Saddle Finisher-W2

Puncher Unit-AH1

Copy Tray-N1

Copy Tray-M1

Cassette Feeding Unit-Z1

Document Tray-J1

Plain Pedestal-E1

Paper Deck-Y1

MAIN UNIT

Type:	Color Digital Multifunction Imaging System
Copying Method:	Laser Dry Electrostatic Transfer
Developing System:	Dry Dual Component Developing System
Memory:	Standard 1GB RAM Maximum 1.5GB RAM
Hard Disk Drive:	80GB
Network Interface Connections:	10/100Base-TX (RJ-45)
Other Interface:	USB 2.0 (Device), USB 2.0 (Host)
First-Copy Time:	9.6 Seconds (Color) 6.7 Seconds (B/W)
Warm-Up Time:	5 Minutes after Powering On
Copy/Print Speed (B/W, Color):	40/36 ppm (Letter)
Scan Resolution:	600 dpi x 600 dpi
Copy Resolution:	600 dpi x 600 dpi
Engine Resolution:	1200 dpi x 1200 dpi
Halftone:	256 Gradations (Continuous-Tone)
Paper Sources	
Standard:	Dual 550-Sheet Paper Cassettes 100-Sheet Stack Bypass
Optional:	Dual 550-Sheet Paper Cassettes 2,700-Sheet Paper Deck
Paper Sizes	
Drawers:	12" x 18", 11" x 17", Legal, Letter, Letter-R, Statement-R, Executive
Bypass:	12" x 18", 11" x 17", Legal, Letter, Letter-R, Statement-R, Executive, 12-5/8" x 17-11/16", Irregular size (3-15/16" x 5-7/8" to 12-7/8" x 18") and Envelopes
Acceptable Paper Weight	
Drawers:	17 lb. Bond to 110 lb. Index
Bypass:	17 lb. Bond to 140 lb. Index
Duplexing:	Standard Automatic Trayless Duplexing (Executive to 12" x 18")
Image Reader:	Color Image Reader-F1 (Standard)
Acceptable Originals:	Sheet, Book, 3-Dimensional Objects (up to 4.4 lb.)
Max. Original Size:	11" x 17"
Document Feeding Method:	Duplexing Automatic Document Feeder (Standard)
Acceptable Originals:	Statement to 11" x 17"
Paper Capacity:	100 Sheets
Acceptable Paper Weight of Originals:	Simplex 11 to 32 lb. Bond (42 to 128 g/m ²) Duplex 13 to 32 lb. Bond (50 to 128 g/m ²)
Scan Speed:	70 ipm (300 dpi) 51 ipm (600 dpi)
Dimensions (H x W x D):	35" x 24-3/8" x 33-1/2"
Weight:	Approximately 295 lb. (134kg)
Power Requirements:	120V AC, 60Hz, 15A

Power Consumption:	1,665W
Plug:	NEMA 5-15P
Toner (Estimated Yield):	Black: 26,000 Images @ 5% Coverage Color: 30,000 Images @ 5% Coverage
Copy Features	
Multiple Copies:	1 to 999
Max. Copy Reservation:	10 Jobs
Color Mode:	Auto Color, Full Color, Black, Single Color, Two Colors
Copy Exposure:	Automatic or Manual (9 levels)
Magnification	
Preset Reduction:	25%, 50%, 64%, 73%, 78%
Preset Enlargement:	121%, 129%, 200%, 400%
Zoom Mode:	25% - 400% (1% increments)
Mail Box Features	
Max. Mail Boxes Supported:	100 User Inboxes, 1 Memory RX Inbox, 50 Confidential Fax Inboxes
Scan Feature	
Network TWAIN Scan:	Standard
Network Scan Utility:	Color Network ScanGear
Color Universal Send Feature (Standard)	
Color Mode:	Auto Color Select (Full Color/Gray Scale) Auto Color Select (Full Color/B/W) Full Color, Grayscale, B/W
Address Book Capacity:	Max. 1,800 Destinations (Includes 200 One-Touch Buttons) Max. 5 LDAP Servers
Sending Methods:	E-Mail, I-FAX, SMB, File Server (FTP, IPX, WebDAV), User Inbox, Super G3 Fax (Optional)
Communication Protocol	
File:	FTP (TCP/IP), SMB (TCP/IP), NCP (IPX), WebDAV
E-Mail/I-Fax:	SMTP, POP3, I-FAX (Simple, Full)
Data Format	
File, E-Mail:	TIFF, JPEG, PDF, PDF (Compact)*, PDF (Trace & Smooth)*, PDF (OCR)*, Encrypted PDF**, Digital Signature PDF (Device**, User***)
I-Fax:	B/W: TIFF (MH, MR, MMR) Color: TIFF (Profile-C)

OPTIONAL ACCESSORIES	
Super G3 Fax Board-V1/Super G3 Multi-Line Fax Board-H1	
Applicable Line:	Public Switched Telephone Network (PSTN)
Connection Lines:	One-Line (Super G3 Fax Board-V1), Two-Lines (Super G3 Multi-Line Fax Board-H1)
Sending/Original Size:	Statement to 11" X 17"
Recording/Printing Size:	Statement to 11" X 17"
Color UFR II/PCL Printer Kit-N1 (Standard for C4080)	
CPU:	Canon Dual Custom Processor (Shared)

Memory:	1GB RAM (Std.), 1.5GB RAM (Max.) (Shared)
Hard Disk Drive	80GB (Shared)
Supported PDL:	UFR II/PCL 5c
Optional PDL Support:	PostScript 3 Emulation (PS Printer Kit-N1*)
Printer Drivers	
UFR II:	Windows® (Windows 2000/XP/Server 2003, Citrix MetaFrame) Macintosh® (OS 10.2.8 or later)
PCL5c:	Windows (Windows 98/Me/2000/XP/Server 2003, Citrix MetaFrame)
PS3 (Optional):	Windows (Windows 98/Me/2000/XP/Server 2003, Citrix MetaFrame) Macintosh (OS 10.2.8 or later)
imagePASS-H1	
Connectable Device:	Color imageRUNNER C4080
CPU:	Celeron M 1.5GHz
System:	System 8e
Memory:	256MB (Std.), 512MB (Max.)
Hard Disk Drive:	80GB
Interfaces (to LAN):	10/100/1000Base-T (RJ-45)
Supported PDL:	Adobe® Postscript® 3, PCL 5c
Utility Software:	Remote Scan 5.3 Command WorkStation for Windows Command WorkStation for Mac
Options:	256MB RAM, Secure Erase v1.0, Hot Folders v2.0, Impose v2.6
ColorPASS-GX100	
Connectable Device:	Color imageRUNNER C4080
CPU:	Intel® Pentium® 4, 3.2GHz
System:	System 8
Memory:	1GB (Std.), 2GB (Max.)
Hard Disk Drive:	160GB
DVD-ROM:	Standard
Interfaces (to LAN):	10/100/1000Base-T (RJ-45)
Supported PDL:	Adobe PostScript 3
Options:	1GB RAM, GA Package, GA Premium, Production Package, Impose v2.6, ACI Kit, Removable HDD
Cassette Feeding Unit-Z1	
Paper Sizes:	12" x 18", 11" x 17", Legal, Letter, Letter-R, Statement-R, Executive
Paper Drawers Capacity:	550 Sheets x 2 Cassettes (20 lb. Bond (80g/m ²))
Dimensions (H x W x D):	12-1/4" x 24-3/8" x 27-3/4"
Paper Deck-Y1	
Paper Size:	Letter
Paper Deck Capacity:	2,700 Sheets (20 lb. Bond 80g/m ²)
Dimensions (H x W x D):	17" x 12-3/4" x 23-1/4"

(Specifications are continued on back cover.)

Finisher-X1

Number of Trays:	1 Tray
Paper Size	
Standard:	12" x 18", 11" x 17", Legal, Letter, Letter-R, Statement-R, Executive
Non-Standard Size:	(3-15/16" x 5-7/8" to 12-7/8" x 18")
Weight:	17 lb. Bond to 140 lb. Index
Paper Capacity Per Tray:	1,000 Sheets (Letter, Statement-R, Executive) 500 Sheets (12" x 18", 11" x 17", Legal, Letter-R)
Paper Capacity of Staple Mode:	
Staple Mode:	1,000 Sheets/30 Sets (Letter, Executive) 500 Sheets/30 Sets (11" x 17", Legal, Letter-R)
Max. Stapling Capacity	
Letter, Executive:	50 Sheets (17 lb. to 20 lb. Bond) 30 Sheets (20 lb. to 28 lb. Bond) 2 Sheets (28 lb. Bond to 140 lb. Index)
11" x 17", Legal, Letter-R:	30 Sheets (17 lb. to 20 lb. Bond) 20 Sheets (20 lb. to 28 lb. Bond) 2 Sheets (28 lb. Bond to 140 lb. Index)
Staple Mode:	Corner (11" x 17", Legal, Letter, Letter-R, Executive)
Dimensions (H x W x D):	28-5/8" x 16-1/4" x 24"

Finisher-W1/Saddle Finisher-W2

Number of Trays:	3 Trays
Paper Size	
Standard:	12" x 18", 11" x 17", Legal, Letter, Letter-R, Statement-R, Executive
Non-Standard Size:	(3-15/16" x 5-7/8" to 12-7/8" x 18")
Paper Weight:	17 lb. Bond to 140 lb. Index
Paper Capacity Per Tray	
Non-Collating Tray:	250 Sheets (Letter, Statement-R, Executive)

Upper Tray:	125 Sheets (12" x 18", 11" x 17", Legal, Letter-R) 1,300 Sheets (Letter, Statement-R, Executive) 650 Sheets (12" x 18", 11" x 17", Legal, Letter-R)
Lower Tray:	2,450 Sheets (Letter) 1,700 Sheets (Statement-R, Executive) 650 Sheets (12" x 18", 11" x 17", Legal, Letter-R)
Paper Capacity of Staple Mode	
Upper/Lower Tray:	1,300 Sheets/100 Sets (Letter, Executive) 650 Sheets/50 Sets (11" x 17", Legal, Letter-R, Staple with different paper sizes)
Max. Stapling Capacity	
Letter, Executive:	50 Sheets (17 lb. to 20 lb. Bond) 30 Sheets (20 lb. to 28 lb. Bond) 2 Sheets (28 lb. Bond to 140 lb. Index)
11" x 17", Legal, Letter-R:	30 Sheets (17 lb. to 20 lb. Bond) 20 Sheets (20 lb. to 28 lb. Bond) 2 Sheets (28 lb. Bond to 140 lb. Index)
Staple Mode:	Corner (11" x 17", Legal, Letter, Letter-R, Executive) Double (11" x 17", Legal, Letter, Letter-R, Executive)
Saddle-Stitching [†]	
Acceptable Paper Sizes:	12" x 18", 11" x 17", Legal, Letter-R
Saddle Stitch Capacity:	15 Sheets (17 lb. to 20 lb. Bond) 10 Sheets (20 lb. to 28 lb. Bond)
Tray Capacity:	25 Sets (1 to 5 Sheets) 15 Sets (6 to 10 Sheets) 10 Sets (11 to 15 Sheets)
Folding:	V-Fold
Dimensions (H x W x D):	46-1/4" x 26-3/4" x 25-7/8"

Puncher Unit-AH1^{††}

Paper Size:	11" x 17", Legal, Letter, Letter-R
Max. Paper Weight:	17 lb. Bond to 140 lb. Index
Punch Type:	3 Holes (Letter, 11" x 17") 2 Holes (Legal, Letter-R)
Punch Waste Tray Capacity:	When approximately 3,000 Sheets of paper have been punched
Dimensions (H x W x D):	32-3/4" x 4-1/4" x 24-1/2"

Other Optional Accessories

- Encrypted Secured Print Software-C1^{†††}
- Barcode Printing Kit-A1^{†††}
- Web Access Software-E1[▲]
- Universal Send Advanced Feature Set-A1^{▲▲}
- Universal Send PDF Security Feature Set-A1^{▲▲}
- Digital User Signature PDF Kit-A1
- Secure Watermark-A1
- Super G3 Fax Board-V1
- Super G3 Multi-Line Fax board-H1
- imageRUNNER 512MB Expansion RAM-C1
- imageRUNNER Security Kit-A2[■]
- Security Expansion Board-E1
- Voice Guidance Kit-A2
- Remote Operator's Software Kit-A2
- Plain Pedestal-E1
- Document Tray-J1
- Copy Tray-M1
- Copy Tray-N1
- Card Reader-D1
- Key Switch Unit-A2
- Braille Label Kit-A1
- ADF Access Handle-A1
- Stamp Unit-A1
- eCopy Suite
- imageWARE Suite

Footnotes:

- * When configured on C4080, requires Universal Send PDF Advanced Feature Set-A1
- ** When configured on the C4080, requires Universal Send PDF Security Feature Set-A1
- *** Requires Digital User Signature Kit-A1
- ▲ Requires IR 512MB Expansion RAM-C1
- † Available with Saddle Finisher-W2 Only
- †† Puncher Unit-AH1 can only be installed with either the Finisher-W1 or Saddle Finisher-W2
- ††† Requires UFR II/PCL Printer Kit-N1
- ▲ When configured on the C4080, requires UFR II/PCL Printer Kit-N1 if printing Web pages; requires PS Printer Kit-N1 on C4080/C4080i if printing PDF files.
- ▲▲ Standard on C4080i
- Requires Security Expansion Board-E1

Canon
image*ANYWARE*

1-800-OK-CANON
www.usa.canon.com

Canon U.S.A., Inc.
One Canon Plaza
Lake Success, NY 11042

Microsoft, Windows, and Windows NT are registered trademarks of Microsoft Corporation in the United States and/or other countries. Acrobat, Adobe, and PostScript are registered trademarks of Adobe Systems Incorporated in the United States and/or other countries. Intel, Celeron, and Pentium are registered trademarks of Intel Corporation. Canon and IMAGERUNNER are registered trademarks of Canon Inc. in the United States and may also be registered trademarks or trademarks in other countries. IMAGEWARE is a registered trademark of Canon U.S.A., Inc. in the United States, and is a trademark of Canon Inc. in certain countries. IMAGEANYWARE is a trademark of Canon. All referenced product names and other marks are trademarks of their respective owners. Specifications subject to change without notice. ©2006 Canon U.S.A., Inc. All rights reserved.

Federal Law prohibits copying of certain documents. Violators may be subject to penalties. We suggest that you check with your own legal counsel. Canon U.S.A., Inc. and Canon Canada, Inc. intend to cooperate with Law Enforcement Agencies in connection with claims of unauthorized copying.



0063W376
0706-C4080-75M-DDM

