

# Canon



## WORKGROUP SOLUTIONS



**imageRUNNER®**  
2022i / 2018i

## WORKGROUP SOLUTIONS

### INTRODUCING THE CANON imageRUNNER 2022i/2018i

RUN Smart. Communicate Brilliantly.



 **imageRUNNER®**  
2022i / 2018i

When it comes to enhanced productivity for workgroups, the Canon imageRUNNER 2022i/2018i models have no equal. These devices combine the smart multifunction capabilities that your business needs today while growing with you into the future through expandable functionality.

Producing up to 1200 x 1200 dpi output at speeds of up to 22 and 18 pages per minute (letter), respectively, these powerful systems deliver the benefits of digital copying, network printing, color scanning, and optional fax features. Plus, intelligent technologies and communications can help you save time, space, and document production and distribution costs.

With the Canon imageRUNNER 2022i/2018i devices, the ability to work smarter is well within your reach!

## CANON imageRUNNER 2022i/2018i DEVICES

The Ultimate in Workgroup Productivity.

### INTELLIGENT COMMUNICATIONS AND PRINTING

Go beyond the features of basic single-function devices to empower users with the smart document distribution, color scanning, network printing, and optional faxing capabilities of the imageRUNNER 2022i/2018i models.

### POWERFUL ADMINISTRATION AND SECURITY

Even with their advanced features, these imageRUNNER models couldn't be easier to administer, with simplified tools for managing device access and helping to protect the security of your confidential information.

### COMPACT DESIGN, UNCOMPROMISING PERFORMANCE

Sacrificing productivity for a compact design is unnecessary with the imageRUNNER 2022i/2018i devices. These systems are powered by Canon's imageCHIP Lite architecture and offer you a choice of paper handling and finishing options to best suit your needs.

### INTUITIVE OPERATION WITHOUT COMPLICATION

Whether a beginner or an advanced user, these Canon imageRUNNER devices are so easy to use and include electronic documentation to help facilitate operation.

Feature	imageRUNNER 2022i/2018i
Copy	Standard
Print	Standard (Canon UFR II LT/PCL)
Fax	Optional
Color Scanning	Standard
Color Send	Standard
Document Feeder	Standard
Duplexing	Standard

## DESIGNED WITH WORKGROUPS IN MIND

Compact Design, Uncompromising Performance.

### SPACE-SAVING DESIGN

The imageRUNNER 2022i/2018i models have a small footprint, so you can conserve valuable office space. This engineering achievement is accomplished through the short vertical paper path that can deliver fast first-print-out times of less than seven seconds and the Accelerated Paper Feeding Method for full productivity when printing duplexed documents.

### POWERFUL SYSTEM ARCHITECTURE

Built upon Canon's imageCHIP (Concurrent Hyper Intelligent Platform) Lite architecture, the imageRUNNER 2022i/2018i devices have been designed with fast multifunction processing and full concurrency. The architecture includes a powerful processor and 256MB of RAM to provide the resources needed to simultaneously handle the workflows of multiple users while maintaining the rated speed.

The imageRUNNER 2022i/2018i devices use Canon's RAPID Fusing System, which combines a durable film medium and a ceramic heater to quickly fuse toner to paper. The RAPID Fusing System delivers virtually zero waiting time between jobs for nonstop productivity, fast warm-up times, and reduced energy

consumption of three watts or less when in Standby mode. High-yielding supplies and consumables help keep operating costs and downtime to a minimum.

### PAPER HANDLING AND FINISHING

The imageRUNNER 2022i/2018i models come standard with paper capacities of 500 and 250 sheets, respectively, and an 80-sheet stack bypass tray. For greater capacity, additional cassette options can be added for a five-way feeding system of up to 1,080 sheets. Media sizes of up to 11" x 17" can be handled in all paper trays.

A 250-sheet internal output tray is standard on both models and provides collating, grouping, and rotating capabilities. Additional output capacity can be obtained with the Inner 2-Way Tray option, which adds a second 100-sheet output destination to the internal tray. An internal finisher option is also available. This can staple up to 50 sheets per set and collate, group, and offset up to 770 sheets of paper. For additional sorting capabilities, a second internal tray can be added to the internal finisher.



Paper Supply



Inner 2-Way-E1



Finisher-U2 with Additional Tray

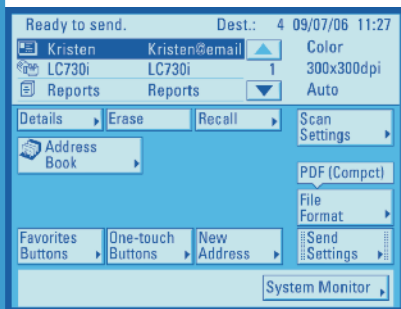


## INTELLIGENT COMMUNICATIONS AND PRINTING

Enhance Your Digital World.

### COLOR SENDING

Change the way you communicate with the flexibility provided by the standard Color Send technology. Distribute black-and-white and color documents in popular PDF, TIFF, or JPEG file formats in one time-saving step. Send them to network destinations such as individual or group e-mail addresses, file folders on the network, or an I-fax over the Internet. And with Canon's innovative PDF High Compression Mode to minimize file sizes while maintaining image quality, you don't need to worry about full-color documents clogging your network.



Send Main Menu

### COLOR SCANNING

Quickly and easily create electronic versions of your original documents with the standard 50-sheet Duplexing Automatic Document Feeder on the imageRUNNER 2022i/2018i models. Documents up to 11" x 17" can be scanned in color or black and white at resolutions up to 600 x 600 dpi. These files then can be imported into TWAIN-compliant applications on the desktop through Canon's Color Network ScanGear software.



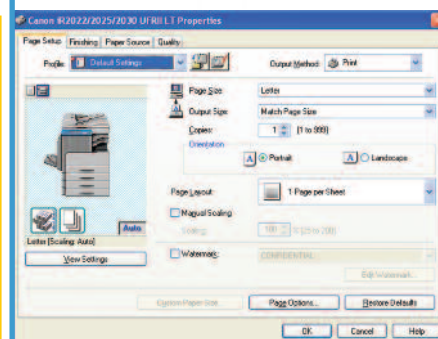
Duplexing Automatic Document Feeder

### SUPER-FAST FAXING

When configured with the optional Super G3 Fax Board, the imageRUNNER 2022i/2018i devices can handle all your faxing needs. Users have access to one-touch speed-dial keys, a high-capacity Address Book, and a host of memory features that expedite your work. Canon's fax driver also allows users to fax documents from their desktop computer for greater productivity.

### NETWORK AND DIRECT PRINTING

With standard USB 2.0 and 10/100Base-TX Ethernet interfaces, the imageRUNNER 2022i/2018i systems are easy-to-use network printers. Accessed through consistent and intuitively designed print drivers, each device can produce high-quality output at up to 1200 x 1200 dpi with the standard print controller. General office environments that print Microsoft® Office documents will benefit from Canon's proprietary UFR II LT technology, which is optimized to facilitate high-speed printing by utilizing the user's desktop computer for data processing. Support for PCL 5e/6 Page Description Languages is also standard. With support for IPv6, these devices are ready to meet your future network infrastructure requirements.



UFR II LT Print Driver

## POWERFUL ADMINISTRATION AND SECURITY

Achieve Complete Control.

### USER AUTHENTICATION

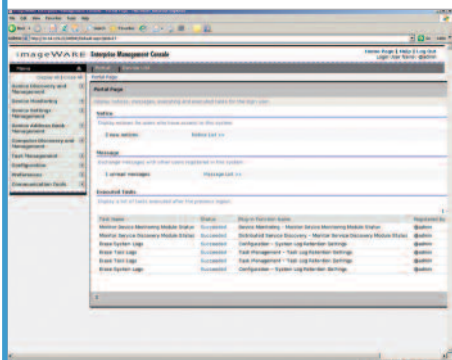
Administrators of imageRUNNER 2022i/2018i devices can limit access to each function and enforce volume ceilings or output totals through Department ID mode, which supports up to 1,000 accounts. When Department ID mode is enabled, users must be authenticated on the device's control panel prior to operation. An optional Card Reader System helps to manage usage through the use of intelligent cards, granting users access after the correct card and password have been entered at the device.

### COMPREHENSIVE DEVICE MANAGEMENT

Whether you're supporting a single system or a fleet of networked devices, Canon's imageWARE Enterprise Management Console (EMC) simplifies and centralizes device installation and management through a Web browser.

### DEVICE AND NETWORK SECURITY

The imageRUNNER 2022i/2018i models include features to help you guard against unauthorized access to the device. These include the capabilities to disable individual network service ports, limit access to specific IP/MAC addresses and ranges, and disable usage of the USB port or access to the fax driver from the desktop. As an aid to preventing errors when sending faxes, administrators can specify that all fax numbers must be confirmed upon entry prior to transmission.



imageWARE Enterprise Management Console



Card Reader System

## USER-FRIENDLY

Intuitive Operation Without Complication.

### EASY-TO-USE INTERFACE

The imageRUNNER 2022i/2018i devices use a control panel consisting of hard keys and a large LCD touch-screen with backlight capability to access the features of the device. The control panel offers outstanding usability, with an easy-to-read display and user-friendly menus. From the desktop, intuitively designed print drivers give point-and-click access to a range of image, paper, and finishing features.

Control Panel



### REMOTE ACCESS VIA THE WEB

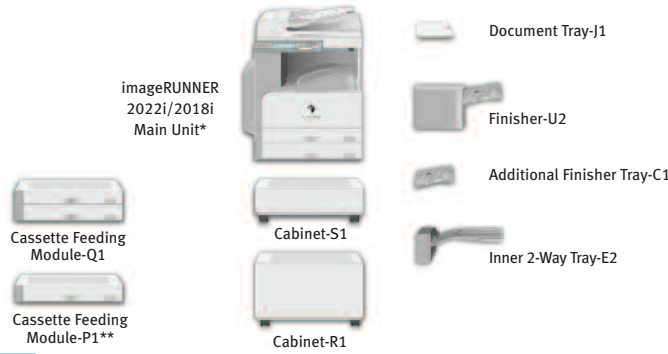
Canon's Remote UI (User Interface) utility provides the ability to access the imageRUNNER 2022i/2018i devices through a Web browser from any computer on the network. From the utility, users can check the status of the device, track the progress of current jobs, monitor paper and toner levels, and administer the Address Book.

### ELECTRONIC DOCUMENTATION

Regardless of your experience level, the functions of the Canon imageRUNNER 2022i/2018i models are highly intuitive. An easy Operation Guide provides step-by-step instructions on how to operate the device's main functions. Documentation is CD-based and features search tools to find answers quickly and easily.



Remote UI



## MAIN UNIT

Type:	Digital Multifunction Imaging System
Imaging System:	Laser Dry Electrostatic Transfer
Developing System:	Dry Single-Component Projection
Fixing System:	RAPID Fusing System
Image Server Memory (Std./Max.):	256MB/256MB RAM
First-Copy-Out Time:	6.9 Seconds from Platen Glass
Warm-Up Time:	One Second or Less from Sleep Mode <sup>†</sup> 26 Seconds or Less from Main Power Off <sup>†</sup>
Copy Speed/Print Speed	
2022i:	Up to 22 ppm (Letter)
2018i:	Up to 18 ppm (Letter)
Maximum Original Size:	11" x 17"
Maximum Copy Size:	11" x 17"
Minimum Copy Size:	3-3/4" x 5/7-8"
Acceptable Originals:	Sheets, Books, and 3-Dimensional Items (Up to 4-3/8 lb.)
Multiple Copies:	1 to 99
Maximum Copy Reservation:	Five jobs
Scan Resolution:	Up to 600 x 600 dpi
Copy Resolution (Enhanced):	Up to 1200 x 600 dpi
Print Resolution:	Up to 1200 x 1200 dpi <sup>††</sup>
Half-tone:	256 Levels
Automatic Trayless	
Duplexing:	Standard
Magnification:	20% to 200% (In 1% Increments)
Preset Reduction:	50%, 64%, 73%, 78%
Preset Enlargement:	121%, 129%, 200%
Exposure Control:	Automatic or Manual (9 Levels)
Standard Paper Capacity	
2022i:	2 x 250 + 80 Bypass (Total 580 Sheets)
2018i:	1 x 250 + 80 Bypass (Total 330 Sheets)
Maximum Paper Capacity:	4 x 250 + 80 Bypass (Total 1,080 Sheets)
Acceptable Paper Weight:	17 lb. to 24 lb. Bond (Cassette) 17 lb. to 32 lb. Bond (Bypass)
Dimensions (H x W x D)	
2022i:	29-3/4" x 24-1/2" x 26-5/8"
2018i:	26-1/2" x 24-1/2" x 26-5/8"
Weight	
2022i:	116 lb.
2018i:	103 lb.
Power Requirements:	120V AC, 60Hz, 4.6A
Power Consumption:	1.425kW (Max.)
Toner Yield:	8,300 at 6% Coverage

## Print Specifications

CPU:	Canon Customer Processor—Shared
Memory:	Shared with Main Unit—256MB Std.
PDL Support:	UFR II LT, PCL 5e/6 (Std.)
Standard Interfaces:	10/100Base-TX (RJ-45) Hi-Speed USB 2.0
Multiple Copies:	1 to 999
Network Operating Systems:	Novell® NetWare® v.5.1, 6, 6.5 Windows® 98/Me/2000/XP/Windows Server 2003/Windows Vista®, Apple® Macintosh® OS X or Higher

## Send Capabilities

Sending Methods:	E-mail, I-fax, Super G3 Fax (Opt.), File Server (FTP, SMB)
Address Book:	500 Destinations
File Formats	
Black and White:	TIFF, PDF
Color:	JPEG, PDF (Compact)
Sending Size:	Statement to 11" x 17"

## Duplexing Automatic Document Feeder

Paper Capacity:	50 Sheets (Letter, Letter-R, Statement)
Acceptable Original Size:	Statement to 11" x 17"
Acceptable Paper Weights:	10 lb. to 32 lb. Bond (One Sheet) 14 lb. to 28 lb. Bond (Multiple Sheets)
Document Scanning Speed:	20 Sheets/Minute (Letter, B/W)

## OPTIONAL ACCESSORIES

### Cassette Feeding Module-Q1

Paper Capacity:	2 x 250-Sheet Cassette
Acceptable Paper Size:	11" x 17", Legal, Letter Letter-R, Statement
Acceptable Paper Weight:	17 lb. to 24 lb. Bond

### Cassette Feeding Module-P1 (Optional for 2018i only)

Paper Capacity:	1 x 250-Sheet Cassette
Acceptable Paper Size:	11" x 17" Legal, Letter, Letter-R, Statement
Acceptable Paper Weight:	17 lb. to 24 lb. Bond

Dimensions (H x W x D):	4-5/8" x 22-7/8" x 22-3/8"
Weight:	Approx. 13 lb.

### Inner 2-Way Tray-E2

Number of Trays:	Two
Acceptable Paper Size:	Statement to 11" x 17"
Tray Capacity	
Upper Output Tray:	100 Sheets (Letter) 50 Sheets (Other Sizes)
Lower Output Tray:	250 Sheets (Letter) 100 Sheets (Other Sizes)

## Finisher-U2

Number of Trays:	One (Second Tray Optional)
Tray Capacity	
Single Tray:	770 Sheets (Letter, Statement-R) 380 Sheets (Legal, Letter-R, 11" x 17")
With Additional Finisher Tray-C1:	200 Sheets Each Tray (Letter, Statement-R) 150 Sheets Each Tray (Legal, Letter-R, 11" x 17")
Staple Position/Size	
Top Left Corner:	11" x 17" (Landscape), Legal (Landscape), Letter, Letter-R 11" x 17" (Portrait), Legal (Portrait)
Top Right Corner:	Up to 30 Sheets (All Sizes)
Max. Stapling Capacity:	Optional Additional Finisher Tray-C1
Attachable Accessories:	

## Super G3 Fax Board-AA1

Applicable Line:	Public Switched Telephone Network (PSTN) Facsimile Network
Connection Lines:	One
Address Book:	500 Destinations
Sending Original Sizes:	Statement to 11" x 17"
Recording Printing Sizes:	Statement to 11" x 17"

## Additional Supplies and Accessories

Additional Finisher Tray-C1	Document Tray-J1
Basic Card Set	Power Supply Kit-Q1
Braille Label Lit-A1	Barcode Printing Kit-B1
Cabinet-R1 (Large)	FL Cassette-AF1
Cabinet-S1 (Small)	Stamp Ink Cartridge-C1
Card Reader Attachment-D1	Staple Cartridge-J1
Card Reader-E1	GPR-18 Black Toner
Copy Card Sets	

\* Standard configuration of the imageRUNNER 2022i shown; the imageRUNNER 2018i device ships standard with one paper cassette.  
\*\* Option for imageRUNNER 2018i only.  
† At room temperature of 20°C/68°F  
†† UFR II LT only. Requires 256MB RAM.



1-800-OK-CANON  
www.usa.canon.com

Canon U.S.A., Inc.  
One Canon Plaza  
Lake Success, NY 11042

As an ENERGY STAR® Partner, Canon U.S.A., Inc. has determined that these products meet the ENERGY STAR guidelines for energy efficiency. ENERGY STAR and the ENERGY STAR mark are registered U.S. marks. Novell and NetWare are registered trademarks of Novell Inc. in the United States and other countries. Windows and Windows Vista are registered trademarks of Microsoft Corporation in the United States and/or other countries. Apple and Macintosh are trademarks of Apple Computer, Inc. CANON, IMAGERUNNER, and the SUPER G3 and GENUINE logos are registered trademarks of Canon Inc. in the United States and may also be registered trademarks or trademarks in other countries. IMAGEANYWARE is a trademark of Canon. All referenced product names and other marks are trademarks of their respective owners.  
Machines shown with optional accessories.  
Specifications and availability subject to change without notice.  
©2007 Canon U.S.A., Inc. All rights reserved.

0115W192  
1007-2022i/2018i-44M-DTM

