



KONICA MINOLTA

The essentials of imaging

OFFERING
THE SKILLS
TO WIN

bizhub 222/282/362

Compact communication in black & white

Office system bizhub 222/282/362

bizhub 222/282/362, office system

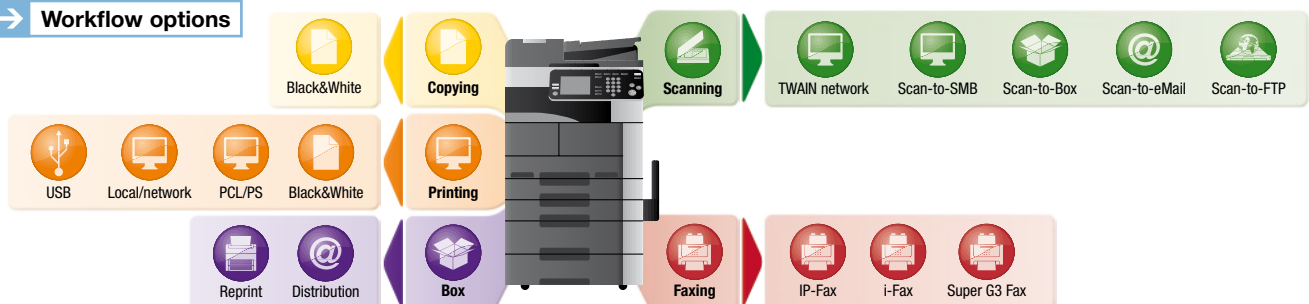


All-round communication in an efficient printer & copier

These days, comprehensive printing and copying as well as other communication capabilities are a must for any user group. This applies as much to workgroups in accounting, controlling and personnel departments as to teams in logistics and warehousing. Offering great communication and networking capabilities, the bizhub 222/282/362 are truly efficient printers and copiers that provide all the answers to the most diverse needs. These robust network devices combine productive printing and copying with the capabilities of a high-speed scanner and optional fax, ensuring flexibility and convenience for whatever task is at hand.

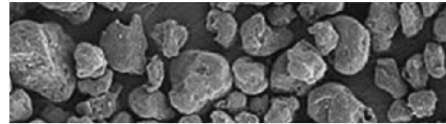
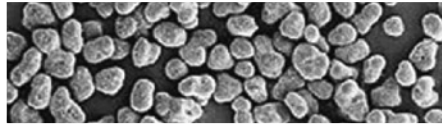
- The bizhub 222/282/362 are a compact yet stylish addition to the busy office. Their comprehensive multi-tasking capabilities and versatile finishing choices make them the ideal replacement for the various stand-alone copiers, printers and fax units still found in many companies.
- Users of the bizhub 222/282/362 gain the benefits of Konica Minolta's "skills to win" – all systems offer efficient printing and copying as well as all-round communication capabilities in a single device, provide above class quality and are entirely eco-friendly in their performance.
- With their intuitive InfoLine design they perfectly complement Konica Minolta's bizhub product line-up, are easy to grasp and straightforward to use.

→ Workflow options



Simitri® polymerised toner

Conventional toner



Multifunctional competence, impressive versatility

Konica Minolta's advanced b/w multifunctionals are even better than the sum of their features: Their combination of printing and copying plus media handling and finishing capabilities translates into overall efficiency and competence, which in the bizhub 222/282/362 is paired with superior image quality. For great results anytime and anywhere.

→ Advanced printing and copying

The bizhub 222/282/362 combine speeds of 22, 28 and 36 b/w pages per minute with an innovative standard Emperon™ print controller. They support all customary operating systems with standard PCL 6 and PostScript 3 capabilities. Thanks to a standard 192 MB memory that can be upgraded to max. 320 MB, their printing and copying functionality is comprehensive and versatile and includes convenient functions like mixplex, n-up, and more. The optional 40 GB hard disc increases the page storage capacity further and makes available additional features, such as watermark and stamp printing as well as overlay.

→ True media flexibility

The bizhub 222/282/362 process the paper sizes A6 to A3 as well as a wide selection of media, covering paper weights from 50 to 210 gsm. Increasing convenience and offering the possibility of higher throughput, the bizhub 222/282/362 allow refilling of paper and toner on the fly – which completely avoids any interruption to longer print runs and extensive jobs. The standard paper capacity of 1,150 sheets can be extended to a generous 3,650 sheets, again supporting smooth operation and enhancing the overall throughput.

→ Configurations



→ Versatile finishing choices

Impressive are also the bizhub 222/282/362's finishing capabilities: The prints from several users are reliably separated in the different bins of the practical mail-bin sorter. The staple finisher is not only convenient for multi-position stapling but can be extended with several options. Hole-punched and stapled reports can be produced just as easily as complete, centre-stapled and folded brochures and a variety of other professional print formats.

→ Eco-friendly quality

Konica Minolta has applied its Simitri® extra fine polymerised toner also to the bizhub 222/282/362. Simitri® toner guarantees an excellent image quality with superior halftone definition and solid fills. At the same time the advanced Simitri® polymerised toner enables fixing at lower temperatures, which means less energy consumption and is kinder to the environment.

bizhub 222
bizhub 282
bizhub 362

Comprehensive communication, smart & easy



There is more to multi-tasking than printing and copying – and it is all available with the bizhub 222/282/362! These competent multifunctionals hold their own with regard to versatile scanning and flexible faxing; and their comprehensive communication capabilities are rounded off with Konica Minolta's unique User Box approach.

→ High-speed scanning

Scanning comprehensive documents is fast and simple with the bizhub 222/282/362. Multi-page documents are scanned automatically at the high speed of up to 70 originals per minute via the optional document feeder. The embedded network interface card allows central scanning in any direction – scan-to-eMail, scan-to-FTP, scan-to-SMB are all standard. The scanning functionality is further enhanced with LDAP support for direct access to the internal company eMail database. With the optional hard disc, network TWAIN scanning to any TWAIN compatible software application is also available.

→ Optional fax

In many situations, communication by fax is still the most efficient way to get the message across. For this purpose, the bizhub 222/282/362 can be upgraded with an optional Super G3 Fax functionality that includes an array of useful functions. Up to 540 one touch keys and up to 300 broadcasting locations are available as well as features like quick memory, batch transmission, fax rerouting, memory reception and others.

→ Unique box functionality

The storing and managing of frequently used documents, becomes simple and straightforward with Konica Minolta's unique User Box approach. Up to 1,000 user boxes can be set up on the optional hard disc of the bizhub 222/282/362. Offering easy and instantaneous retrieval of any stored document, the boxes facilitate the distribution and sharing of documents, which can for example be sent as eMail attachments via scan-to-eMail/FTP/SMB.

Easy administration – absolutely safe

Comprehensive administration tools are paired with Konica Minolta's high security standards in these devices, with considerable benefits for administrators and users alike. Various PageScope utilities govern access to and monitoring of devices, providing reliable control over print volumes and easy allocation of printing costs to users and accounts.



→ Valuable PageScope utilities

- PageScope Web Connection is the helpful network utility that provides convenient access to the device using the standard web browser. Never has it been easier and faster to check the device status and make desired network settings.
- PageScope Net Care Device Manager satisfies essential administrator demands by enabling fast access to and simple monitoring of individual or all devices on the network. Automatic eMail notifications alert users to the status of each device, so that any problem can be dealt with immediately, jobs are processed without delay and the uptime of all monitored equipment is maximised.
- The PageScope Data Administrator makes the integration of new equipment into existing workflows and the programming of eMail addresses fast and simple. Authentication and account data can be individually programmed per user, including the allocation of limited print and copy volumes.

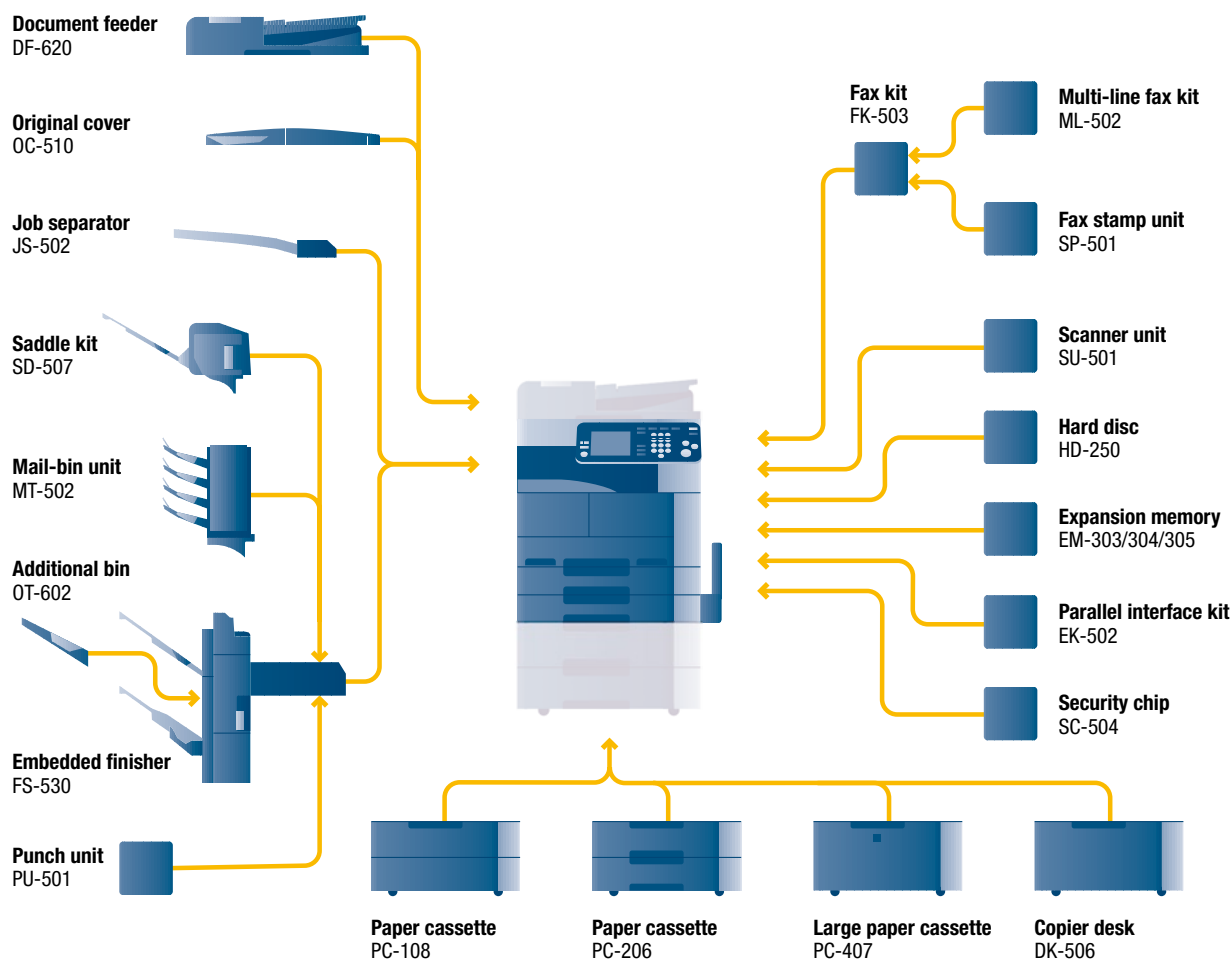
→ Essential security features

- With secure printing, the user has to enter a password directly at the bizhub 222/282/362 before his print job is produced. This avoids confidential information being left lying around and possibly falling into the wrong hands.
- Password protection is available for the internal hard disc of the system, effectively preventing the reading-out of or tampering with the HDD and its contents by anyone who is not authorised to do so.
- HDD data erasure safeguards all information ever stored on the internal hard disc. Various erasure methods are used to overwrite temporary data as well as previously stored data. Additionally all data can be erased when the HDD is disposed of.
- IP filtering enables the administrator to limit the use of specific output devices to certain users or user groups, reliably blocking unauthorised access to configuration and network settings

The bizhub 222/282/362 have a lot to offer on departmental level: More than just printers and copiers, they are truly efficient with great communication and networking capabilities and provide all the answers to the diverse needs of busy teams and workgroups.



➔ Option diagram & descriptions



bizhub 222/282/362

Compact, productive 22/28/36 ppm (A4) network communication devices for mid-sized workgroups including 2x 500 sheets universal cassettes (A5–A3, 60–90 gsm), 150 sheet bypass (A5–A3, 50–210 gsm), stackless ADU, 192 MB system memory, PCL 6 and PS3 printing, Ethernet 10-Base-T/100-Base-TX, USB 2.0 interfaces

DF-620 Document feeder	Max. 80 sheets, A5–A3, 35–128 gsm, up to 70 opm
OC-510 Original cover	Covers platen glass
JS-502 Job separator	Separation of e.g. Fax output
SD-507 Saddle kit	Center fold and staple, max. 20 booklets
MT-502 Mail-bin unit	4 trays (125 sheets each)
FS-530 Embedded finisher	Max. 1,200 sheets, max. 50-sheet stapling
OT-602 Additional bin	3rd output tray (200 sheets)
PU-501 Punch unit	4-hole punching
PC-108 Paper cassette	A5–A3, 1x 500 sheets, 60–90 gsm

PC-206 Paper cassette	A5–A3, 2x 500 sheets, 60–90 gsm
PC-407 Large Paper cassette	A4, 2x 1,250 sheets, 60–90 gsm
DK-506 Copier desk	Storage
FK-503 Fax kit	Super G3 Fax
(incl. SU-501 and 32 MB)	
ML-502 Multi-line fax kit	2nd line fax
SP-501 Fax stamp unit	Stamps originals
SU-501 Scanner unit	IP address fax, IP scanner, etc.
(incl. 32 MB)	
HD-250 Hard disc	40 GB, scan-to-Box/HDD/TWAIN, overlay, etc.
EM-303/304/305	32/64/128 MB
Expansion memory	
EK-502 Parallel interface kit	Local printing
SC-504 Security chip	HDD data encryption

➔ Finishing options



corner
stapling



2-point
stapling



four-hole
punching



duplex



combined
mixplex/
mixmedia



offset sorting



criss-cross
sorting



booklet

→ Technical specifications

■ Copier specifications

Copying process	Electrophotographic laser
Toner system	Simitri®- polymerised toner
Copy/print speed A4	Up to 22 cpm (bizhub 222) Up to 28 cpm (bizhub 282) Up to 36 cpm (bizhub 362)
Copy/print speed A3	Up to 15 cpm (bizhub 222) Up to 17 cpm (bizhub 282) Up to 20 cpm (bizhub 362)
Autoduplex speed A4	Up to 22 cpm (bizhub 222) Up to 28 cpm (bizhub 282) Up to 36 cpm (bizhub 362)
1st Copy/print time (A4)	5.3 sec (bizhub 222) 5.3 sec (bizhub 282) 4.8 sec (bizhub 362)
Warm-up time	Approx. 24 sec
Copy resolution	600 x 600 dpi
Gradation	256 gradations
Multi-copy	1–999, interruption mode
Original format	Up to A3
Magnification	25–400% in 0.1% steps, Autozooming
Copy functions	Cover and page insertion, book copy, image repeat, proof copy, job setting memory Overlay, stamp, watermark, (with optional hard disc)

■ Printer specifications

Print resolution	600 x 600 dpi
Controller CPU	300MHz
Page description language	PCL 6, PostScript 3
Operating systems	Windows NT4.0/2000/XP/XP64/Vista/Vista64 Windows Server 2000/2003/2003 x64/Server2008 Macintosh OS 9.2 or later Macintosh OS X 10.2,3,4/10.4 Intel or later Unix/Linux/Citrix
Printer fonts	80x PCL Latin, 136x PostScript 3 Emulation Latin
Print functions	Mixmedia and mixplex, Job programming "Easy Set", Overlay, Watermark

■ Scanner specifications

Scan speed	Up to 70 opm (200 dpi via ADF) Up to 41 opm (600 dpi via ADF)
Scan resolution	Max.: 600 x 600 dpi
Scan modes	Network TWAIN scan (optional), scan-to-eMail, scan-to-FTP, scan-to-SMB, scan-to-Box (optional)
File formats	PDF, TIFF
Scan destinations	540, LDAP support

■ Fax specifications (optional)

Fax standard	Super G3
Fax transmission	Analogue, i-Fax, IP-Fax
Fax resolution	Max.: 600 x 600 dpi (ultra-fine)
Fax compression	MH, MR, MMR, JBIG
Fax modem	Up to 33.6 Kbps
Fax destinations	540
Fax functions	Polling, Memory Transmission, Receipt to eMail/SMB/Box

■ User box specification (optional)

Max. user boxes	1,000
Type of user boxes	Public, personal (with password or authentication), secure print
User box functionality	Reprint, download, sending

■ System specifications

System memory	Standard: 192 MB, Max.: 320 MB
System hard disc (optional)	40 GB
Interface	10-Base-T/100-Base-TX Ethernet, USB 2.0, Parallel IEEE1284 (optional)
Network protocols	TCP/IP, IPX/SPX, AppleTalk (EtherTalk), SMB, LPD, IPP, SNMP, HTTP
Automatic document feeder (optional)	Up to 80 originals, A5–A3, 35–128 gsm
Paper size	A6–A3
Paper weight	50–210 gsm
Paper input capacity	Standard: 1,150 sheets, Max.: 3,650 sheets
Tray 1	500 sheets, A5–A3, 60–90 gsm
Tray 2	500 sheets, A5–A3, 60–90 gsm
Manual bypass	150 sheets, A6–A3, 50–210 gsm
Tray 3 (optional)	500 sheets, A5–A3, 60–90 gsm
Tray 3+4 (optional)	2x 500 sheets, A5–A3, 60–90 gsm
Large capacity cabinet (optional)	2,500 sheets, A4, 60–90 gsm
Automatic duplexing	A5–A3, 60–90 gsm
Finishing modes (optional)	Offset, group, sort, staple, punch, centre-fold, booklet, mailbin sort
Output capacity (w. finisher)	Max.: 1,200 sheets
Output capacity (w/o finisher)	Max.: 200 sheets
Stapling capacity	50 sheets
Copy/print volume (monthly)	Recommended: 4,500/Max. 19,000 (bizhub 222) Recommended: 7,000/Max. 28,000 (bizhub 282) Recommended: 10,000/Max. 48,000 (bizhub 362)
Toner life	17,500
Drum/Developer life	Approx. 65,000 (bizhub 222) Approx. 80,000 (bizhub 282) Approx. 100,000 (bizhub 362)
Power consumption	220–240 V / 50/60Hz, Less than 1.47 KW (system)
System dimensions (W x D x H, mm)	677 x 710 x 718
System weight	Approx. 74 kg

■ System features

Security	ISO 15408 EAL3 (in evaluation), IP filtering, SSL network communication, user authentication, secure print, hard disc overwrite, hard disc data encryption (optional)
Accounting	Up to 100 user accounts, LDAP support
Software	PageScope Net Care Device Manager PageScope Data Administrator PageScope Box Operator PageScope Workware (Trial) Print Status Notifier



KONICA MINOLTA

Simitri



CITRIX



- All specifications relating to paper capacity refer to A4-size paper of 80 gsm quality.
- All specifications relating to scanning, copying or printing speeds refer to A4-size paper that is scanned, copied or printed crosswise in multipage, simplex mode.
- The support and availability of the listed specifications and functionalities varies depending on operating systems, applications, network protocols as well as network and system configurations.
- The stated life expectancy of each consumable is based on specific operating conditions such as page coverage for a particular page size (5 % coverage of A4). The actual consumables life will vary depending on the use and other printing variables including page coverage, page size, media type, continuous or intermittent printing, ambient temperature and humidity.
- Some of the product illustrations contain optional accessories.
- Specifications and accessories are based on the information available at the time of printing and are subject to change without notice.
- Konica Minolta does not warrant that any prices or specifications mentioned will be error-free.
- Microsoft, Windows and the Windows logo are trademarks, or registered trademarks, of Microsoft Corporation in the United States and/or other countries.
- All other brand and product names may be registered trademarks or trademarks of their respective holders and are hereby acknowledged.
- Printed in Germany on chlorine-free bleached paper.

Your Konica Minolta Business Solutions Partner:

