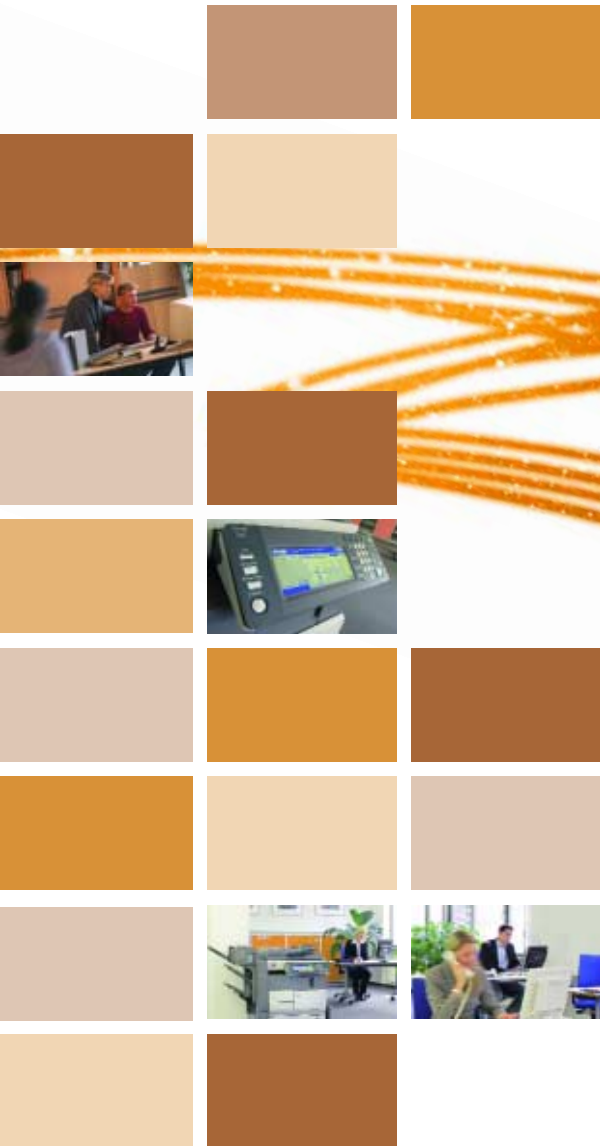




KONICA MINOLTA

Office system bizhub 420



# **bizhub 420**

The document workflow wonder

# Impressive and completely **effective**



The bizhub 420 fits snugly into any large department or office, wherein mid-volume print or copy runs are a daily requirement. In one fell swoop it eliminates all the stand-alone black-and-white printers, copiers and faxes which would otherwise clutter up and disturb the effective office environment.

The bizhub 420, with its all-embracing network multi-communication functionality, supports all the needs of the modern progressive office and operations are stunningly easy to activate on the large touch screen panel.

Whatever the diverse demands of the active office the bizhub 420 makes light of them all. For instance, the machine can switch immediately from a mid-volume print or copy run to a quick scan-to-eMail message, to the printing of individual documents, to the production of a booklet and simultaneously faxing of an invoice, receiving a fax, saving a regularly used document for future use or distributing a circular to staff.

Apart from Konica Minolta's optional Emperon™ print controller technology the bizhub 420 also offers the options of Boxes for document storage, the Super G3 fax suite and comprehensive security functions.

With its productive 42 ppm (A4) copying, excellent handling, versatile finishing features and the optional printing and faxing, the bizhub 420 is what the cost-effective, efficient business world needs.

The bizhub 420 is waiting to serve you!



## **bizhub 420**





## ➔ Ideally operational

The bizhub 420 incorporates a perfect user interface. The control panel can be tilted as required and the enlarged display is particularly suitable for those with a visual impairment. The fast response touch-LCD and the exceptionally clear, straightforward structure means that even the occasional user will feel completely at home with the bizhub 420.

## ➔ Smooth speedy scanning

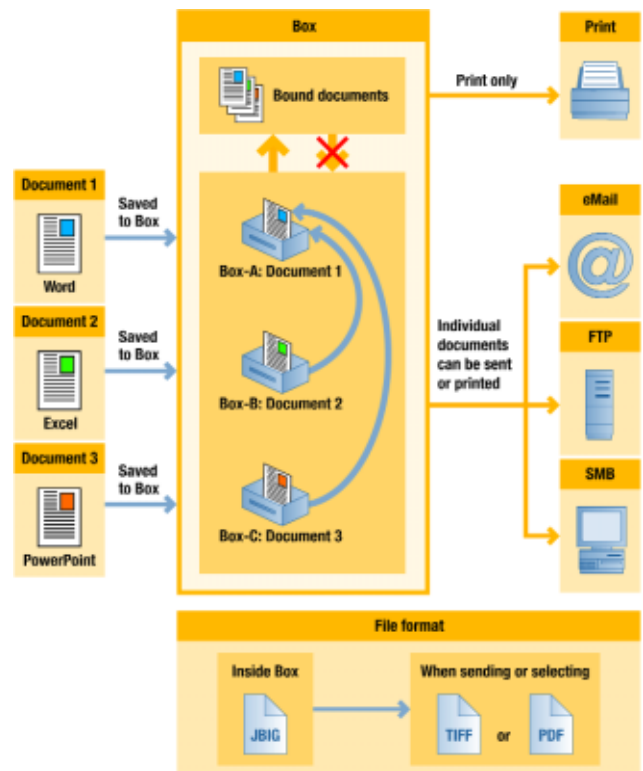
The document feeder is fitted as standard on the bizhub 420 and scans up to 70 originals per minute. Thanks to the standard network card, scanned documents can be rapidly stored, distributed via scan-to-eMail or shared within the network.

\* Optional functionality  
 \*\* Requires optional HDD

# Professional support

## → Full communication

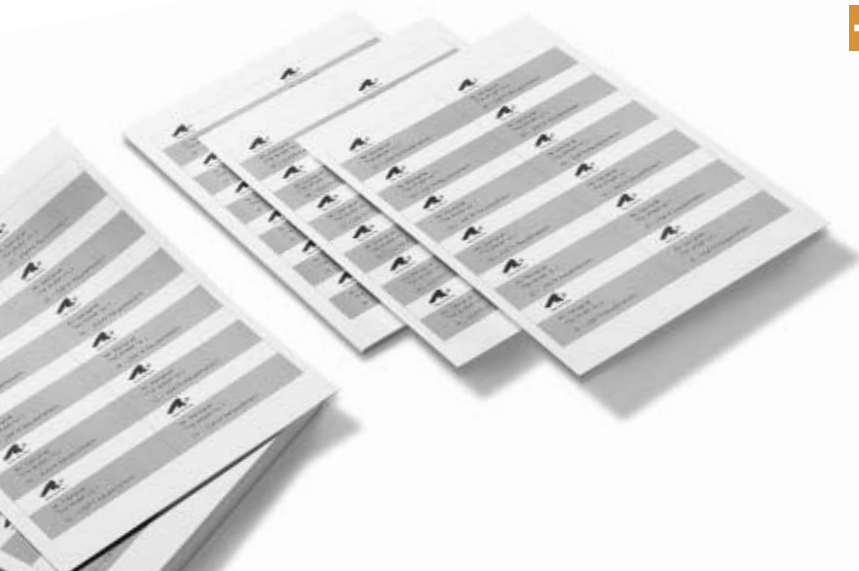
- Installing the optional 40 GB hard disc drive makes the versatile Konica Minolta Box functionality available. An enormous quantity of documents can be stored in up to 1,000 user boxes as required. Documents can thus be retrieved, recombined, reprinted or distributed at will. In addition, Personal User Boxes can only be used by specified individuals and are protected by a box password. This full flexibility is a boon for any lively, efficient office.
- The optional Super G3 fax is the all-in-one solution for office faxing. It is equipped with a whole range of functions, all of which are designed to be both effective cost and time savers. Among them are memory reception and transmission, broadcasting and a good range of one-touch and programme dials which enable faxes to be sent to predefined users or user groups merely at the touch of a button! With the installation of a second fax kit even the simultaneous reception and transmission of faxes is available.



Box functionality: data flow – document storage and distribution

## → High print definition

- The powerful Emperon™ print controller supports PCL5e/6 and PS3 printing in all major platforms and gives an amazingly high resolution of up to 2,400 x 600 dpi. Thanks to Simitri™, Konica Minolta's innovative extra fine polymerised toner, you get the best black-and-white prints and copies possible.



# features

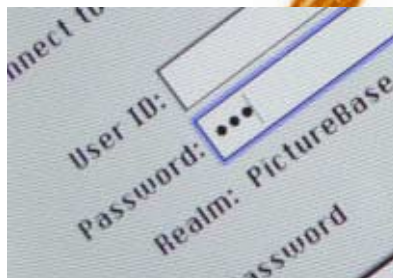


## → Top security is essential

The bizhub 420 is easily integrated into the office network. Rest assured, however, that Konica Minolta provides the perfect protection for the shared environment.

- For instance, a print job can be given a password and only once the correct password has been entered at the machine will the print job be released for printing.
- Similarly, the optional hard disc can be protected with a password, stored data can be automatically erased at user selected intervals and the optional encryption tool ensures that the data remains secure even if the hard disc is removed, thus preventing the unauthorised reading of data.
- The bizhub 420 also complies with the latest international security standard ISO 15408 EAL3\*.

\*from Autumn 2006



# Excellent handling and finishing



The bizhub 420 is a leading exponent in the art of quality printing and finishing alternatives combined with effective office workflow. Gone are the days of inconvenient and costly out-sourcing.

The bizhub 420 just keeps on running thanks to the high capacity consumables and the standard paper supply of an impressive 1,150 sheets, which can be augmented with the optional paper cabinets up to a massive 5,650 sheets.

With amazing speed it takes everything in its stride. Whether it's a presentation, special postcards, a circular letter with printed envelopes, high-volume document printing, invoices or promotional material. The stunning range of paper input via the bypass including any thickness from 50 g/m<sup>2</sup> to 210 g/m<sup>2</sup>, any size from A6 up to A3 – enables the bizhub 420 to easily produce the wide variety of top quality printed matter that is required.

Extensive finishing options, from offset sorting to booklet production, further heighten the image of the document and complete the professional approach.

Effective quality, versatility, efficiency and dependability. Who could ask for more?



corner stapling



2-point stapling



booklet



four-hole punching

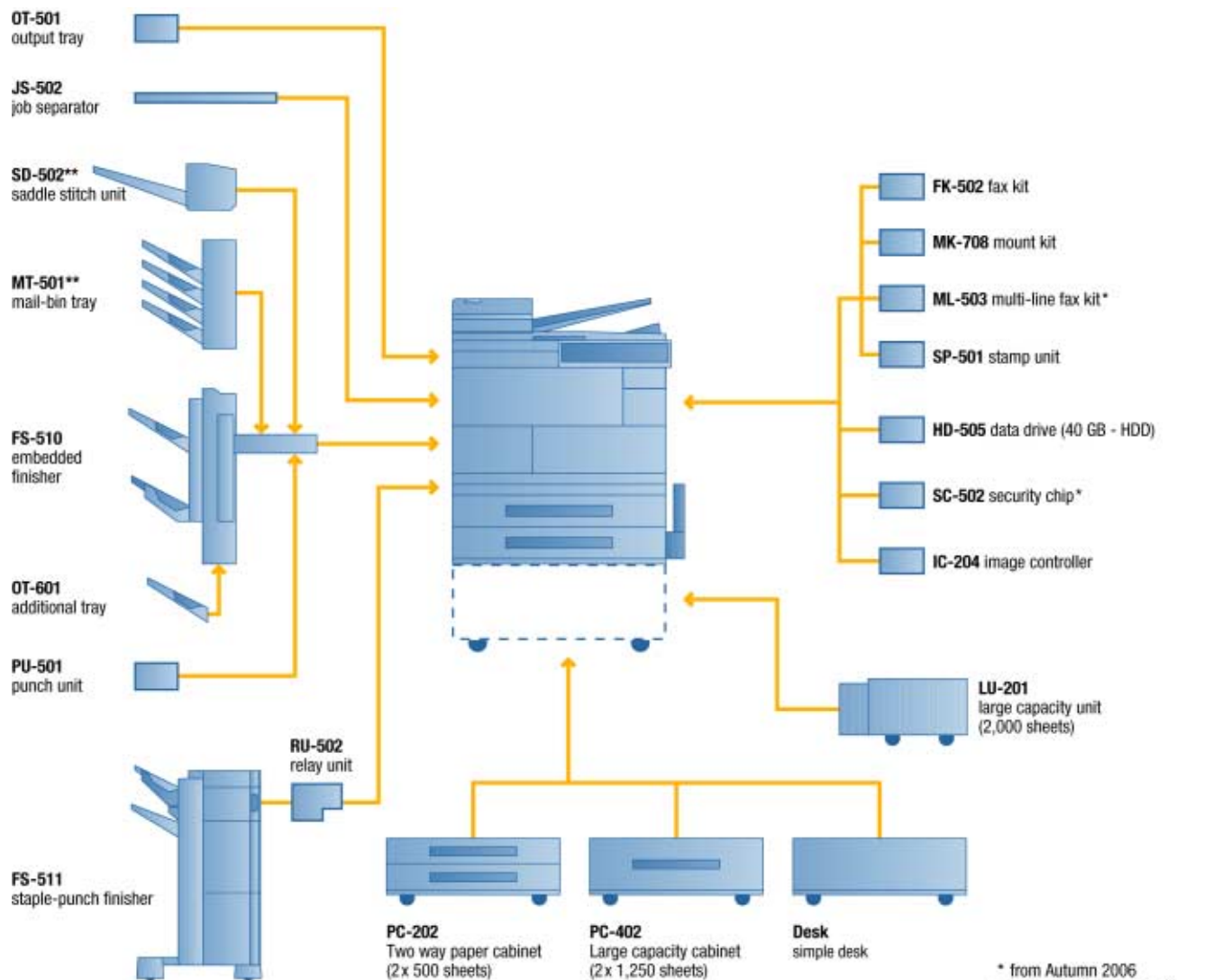


sheet insertion



mail-bin sort

# Your options at a glance



\* from Autumn 2006  
\*\* either SD-502 or MT-501  
can be installed into FS-510  
at one time



KONICA MINOLTA

Simitri



## Technical specifications

### Copier specifications

#### Copying process

Electrophotographic laser

#### Toner system

Polymerised toner

#### Copy/print speed A4

42 cpm/ppm

#### Copy/print speed A3

Up to 23 cpm/ppm

#### 1st Copy/print time

3.6 sec. (A4)

#### Warm-up time

Approx. 30 sec.

#### Copy resolution

Equivalent to 1,200 x 600 dpi

#### Gradation

Equivalent to 256 gradations

#### Multicopy

1-999, countdown, interruption mode

#### Original format

A5-A3

#### Magnification

25-400% in 0.1% steps

#### Copy features

Image rotation, image repeat, booklet creation, combination N-in-1, stamp

### Printer specifications (optional)

#### Print resolution

Equivalent to 2,400 x 600 dpi

#### Controller CPU

MPC 8245, 400 MHz

#### Page description language

PCL5e/6

PostScript 3

#### Operating systems

Windows 98/ME/NT4.0/2000/XP/

Server 2003

Macintosh 9.0 or later/OS X 10.2, 10.3, 10.4

### Scanner specifications

#### Scan speed

Up to 70 OPM (300 dpi via DF)

Up to 50 OPM (600 dpi via DF)

#### Scan resolution

Max.: 600 x 600 dpi

#### Scan modes

Network TWAIN scan\*

Scan-to-eMail

Scan-to-FTP

Scan-to-SMB

Scan-to-Box/HDD\*

(\*with optional hard disc)

#### File formats

TIFF, PDF

#### Scan destinations

LDAP support

### Fax specifications (optional)

#### Fax standard

Super G3

#### Fax resolution

Max.: 600 x 600 dpi (ultra-fine)

#### Fax compression

MH, MR, MMR, JBIG

#### Fax modem

Up to 33.6 Kbps

#### Fax back-up memory

32 MB

#### Fax destinations

1,000 (2,000 with optional hard disc)

#### Fax functions

Polling, memory transmission/reception, broadcasting, PC fax, multi-line fax\*\*

### System specifications

#### System memory

576 MB

#### System hard disc (optional)

40 GB

#### Interfaces

10-Base-T/100-Base-TX Ethernet,

Parallel IEEE 1284

USB 2.0

### Automatic document feeder (standard)

Up to 80 originals

#### Paper size

A5-A3

#### Paper weight

60-105 g/m<sup>2</sup> (from trays)

50-210 g/m<sup>2</sup> (from bypass)

#### Paper input capacity

Standard: 1,150 sheets

Max.: 5,650 sheets

#### Output capacity (optional)

Up to 3,250 sheets

#### Automatic duplexing (standard)

A5-A3

60-105 g/m<sup>2</sup>

#### Finishing modes (optional)

Offset, group, sort, staple, punch,

centre-fold, booklet, mailbin sort

#### Copy/print volume (monthly)

Recommended: 19,000

Max.: 150,000

#### Power consumption

Less than 1,560 Watt (system)

#### System dimensions (W x D x H mm)

677 x 708 x 895

#### System weight

Approx. 91.2 kg (with DF)

### System features

#### Security

ISO 15408 EAL3\*\*

#### Accounting

Up to 100 user accounts (1,000 with optional hard disc)

Active Directory support

(user name + password)

User function access definition

#### Software

PageScope NetCare

PageScope NetworkSetup

PageScope Data Administrator

PageScope Box Operator

PageScope Workware

PageScope ScanDirect/Pro

\* optional functionality

\*\* from Autumn 2006

All specifications relating to paper capacity refer to A4-size paper of 80 g/m<sup>2</sup> quality.

All specifications relating to scanning, copying or printing speeds refer to A4-size paper that is scanned, copied or printed crosswise in multipage, simplex mode.

The memory capacities listed refer to A4-size paper.

Some of the product illustrations contain optional accessories.

Konica Minolta does not warrant that any prices or specifications mentioned will be error-free.

Specifications are subject to change without notice.

Microsoft, Windows and the Windows logo are trademarks, or registered trademarks, of Microsoft Corporation in the United States and/or other countries.

All other brand and product names may be registered trademarks or trademarks of their respective holders and are hereby acknowledged.



Printed in the UK on Revive Silk, a paper containing a minimum of 75% post consumer de-inked recycled waste, using soya based mineral-oil free inks.

Your Konica Minolta Business Solutions Partner:



Konica Minolta  
Business Solutions (UK) Ltd  
Precedent Drive, Rooksley  
Milton Keynes MK13 8HF  
Tel: 01908 200400  
Email: info@bs.konicaminolta.co.uk