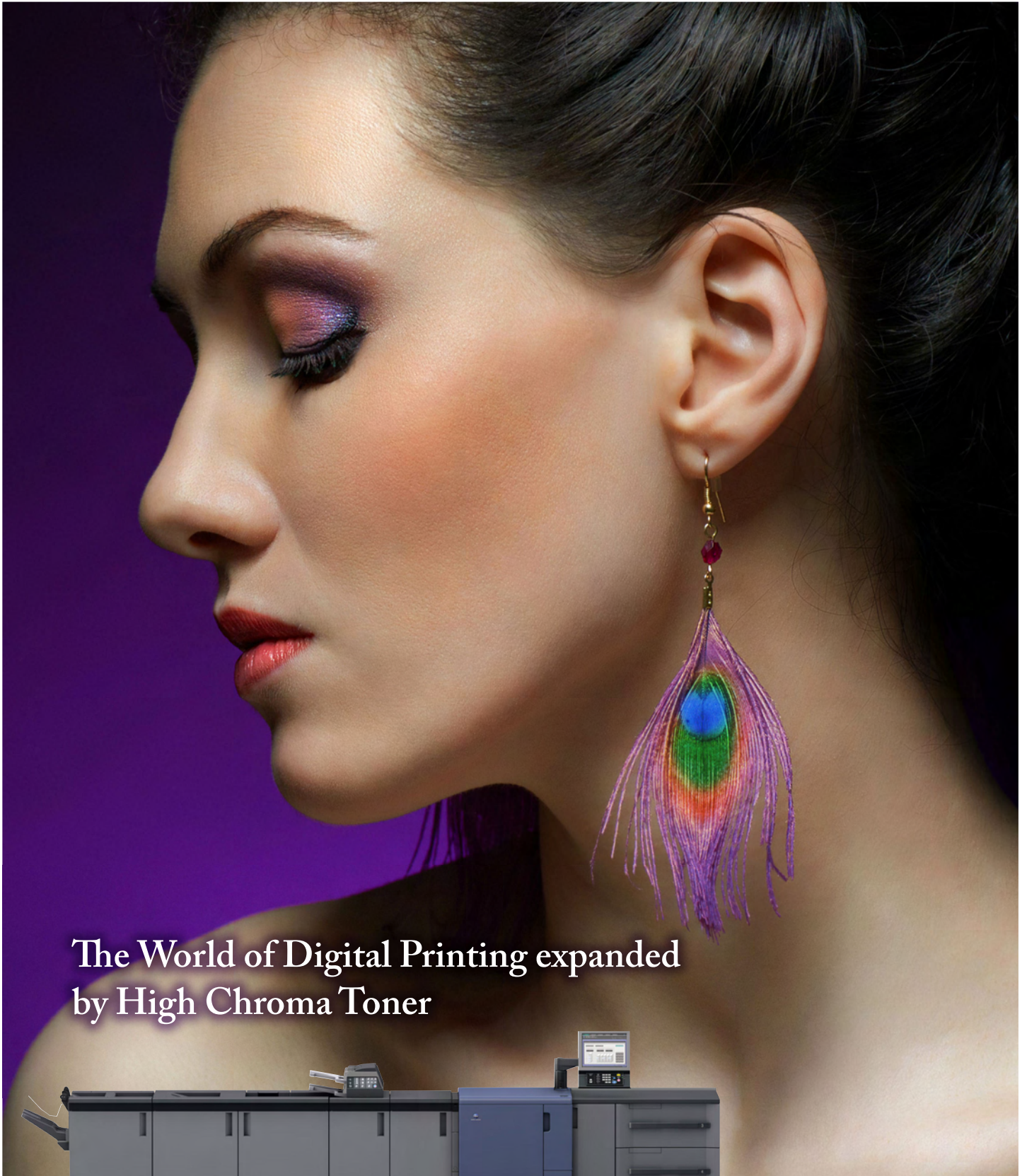




KONICA MINOLTA

# bizhub PRESS C71hc



The World of Digital Printing expanded  
by High Chroma Toner



Giving Shape to Ideas



## Main Features of bizhub PRESS C71hc

### IMPRESSIVE

High Chroma Toner realises wider range of colour reproduction

### RELIABLE

Top Class Reliability

- Colour consistency
- Front to back registration accuracy

### EFFECTIVE

Extensive Lineup of Inline Options to improve Printing Process Operability

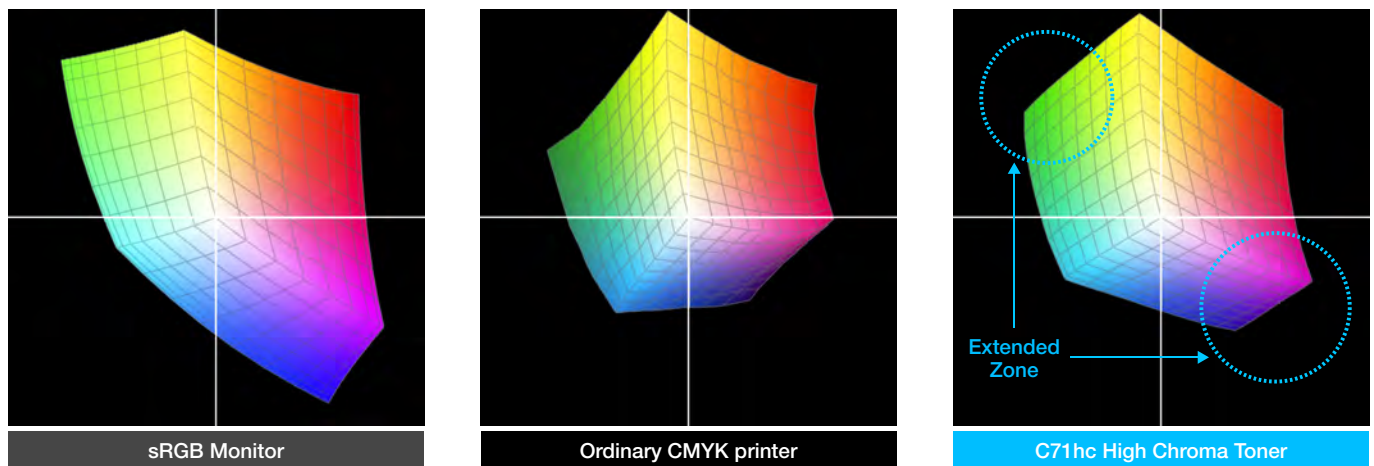
# See the Difference in “Colour Reproduction”

Pink, purple and green become muddy when printed.  
Ever experienced this problem?

Colours seen on displays or images shot using a digital camera can express a wider colour gamut than CMYK used for ordinary printing. For this reason, because CMYK ink or toner has a narrow colour gamut of colours such as pink, purple and bright green, colours tend to become dull or muddy when printing RGB images.

As the world's only printer that uses a new toner free of the restrictions imposed by the colour gamut of ordinary toners, bizhub PRESS C71hc offers a solution to such problems. Experience a new world of printing with the wide colour gamut of High Chroma Toner and the outstanding expressive capabilities of bizhub PRESS C71hc.

■ Comparison of Colour Gamut



■ Comparison of Images from bizhub PRESS C71hc with Images from an ordinary CMYK Printer



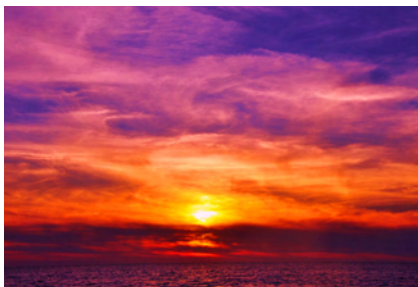
(Note: The actual sample may differ depending on media used.)

# See the Difference in “Expressive Capabilities”

▶ Colours not possible to reproduce until now can be reproduced by sRGB approximate colours.

## Nature Photographs, Apparel Catalogues, etc.

Addition to the conventional CMYK colour gamut, one of the greatest features of bizhub PRESS C71hc is its ability to reproduce colours difficult to realise using a CMYK printer such as sunset purples, the pink of flowers, high-key greens and blues. This makes it possible to express the intent of photographers and designers, for example, with greater fidelity in prints. Moreover, prints of items such as apparel catalogues or fashion photographs can be supplied with colours close to the originals.



▶ Smooth Skin Tones ideal for Photo Applications

## Studio Photographs, Photo Books, etc.

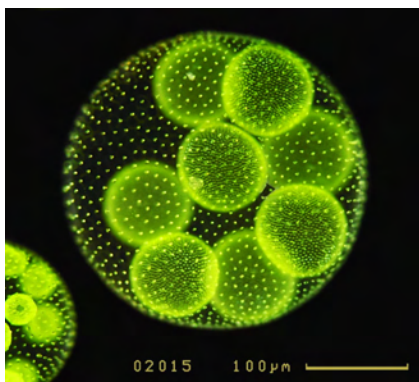
The wide colour-gamut toner used by bizhub PRESS C71hc utilises colour materials featuring greater saturation and brightness than conventional CMYK toners, enabling realisation of smooth skin tones with reduced skin texture roughness and less graininess, making it ideal for studio photograph and photo book printing. In addition, high-quality prints can also be supplied for items such as small-lot cosmetics or apparel catalogues.



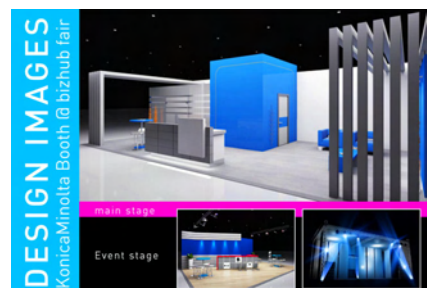
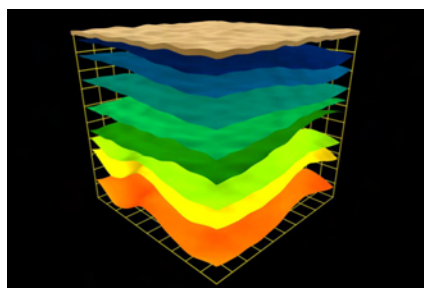
▶ Ability to propose Impactful Designs

**Business Cards, Shop Cards, POPs, DM, etc.**

bizhub PRESS C71hc provides the capability to create items such as impactful business cards or POPs using colours not often seen. bizhub PRESS C71hc enables utilisation of colours that users have hesitated to use in printing up to now, realising the ability to supply distinctive printing services. Moreover, differences between colours on monitor screens and prints can be minimised when approaching customers with DMs or cross media.



▶ Improves Muddiness when printing Display Colours



**Academic Reports, Analytical Photographs, CG, Office Documents, etc.**

Because images seen on screen, such as office documents and CG, are configured with RGB, some colours cannot be reproduced with conventional CMYK printers because they have a narrow colour gamut. High Chroma Toner, however, is capable of reproducing colours closer to the image seen on screen and thus also demonstrates its prowess for presentation documents.

▶ Reduces Restrictions on Colours used when creating Designs

**Designs, Illustrations, Coterie Magazines, etc.**

Wish to use impactful colours on packages, but hesitate to do so because such colours cannot be produced with ordinary printing. At times like this, with bizhub PRESS C71hc, small lots can be printed with abundant colour reproduction and high productivity using preferred colours. Prints faithfully reproduce the colours that satisfy the creator's particular preferences for animation drafts, illustrations or coterie magazines featuring a wide variety of colours such as purples and bright greens. In addition, bizhub PRESS C71hc also expands the range of reproduction of special colours such as pantones, contributing to the expansion of printing services and enhancement of customer satisfaction.



▶ Also compatible with conventional CMYK printing

**Regular Prints, Catalogues, etc.**

Because it also covers the CMYK gamut, High Chroma Toner enables the creation of beautiful prints of ordinary CMYK files with ease simply by applying CMYK profiles.

\*Although colours identical to CMYK toner can be reproduced, since the colour gamut differs from that of ordinary toners, there may be differences in elements such as the dot density or colour mixture ratio.

# See the Difference in “Quality” and “Cost”

## ▶ High Registration Accuracy that improves Quality and reduces Costs

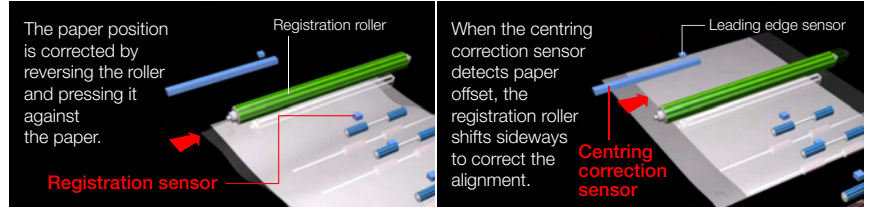
### Top level front to back registration accuracy

Poor registration accuracy in applications demanding cutting precision such as business cards, shop cards and tickets, full-bleed printing or thin-paper bookbinding not only affects the quality of printed products, but also leads to problems such as increased costs generated by waste sheets or reprints and delayed deliveries due to lost time. bizhub PRESS C71hc, however, is a system that not only features extensive improvements to the registration unit, but is also capable of realising high quality, low costs and short lead times.

### High-precision Registration Adjustment Unit

Paper position and paper curls are detected by a high-precision sensor and the registration swing mechanism conveys the paper to the correct position. bizhub PRESS C71hc features major improvements in thin paper registration accuracy that has presented difficulties until now. Moreover, bizhub PRESS C71hc is furnished with a back side magnification adjustment function that ensures unflinching front to back registration matching with no loss in productivity.

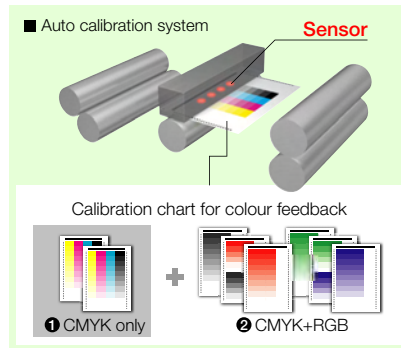
#### ■ Registration swing mechanism



## ▶ See the Difference in Reliability realised by Outstanding Colour Consistency

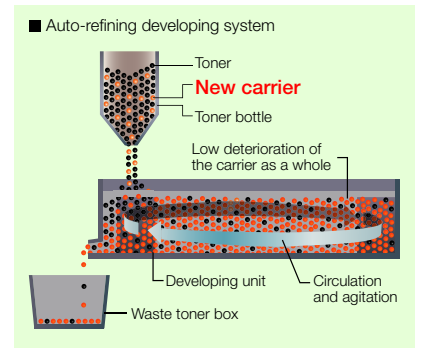
### Colour Consistency goes beyond the Bounds of the Class

There are a great many applications including high-priced products such as luxury cars and jewelry, package designs and company logos that require that the demanding colour requirements of the customer be met. Such problems that were previously regarded as unsolvable because of the characteristics of digital printing can be resolved by the outstanding colour consistency of bizhub PRESS C71hc, making it possible to meet the requirements of customers with confidence and win their lasting trust.



### Secondary Colour Calibration

Output paper density adjustment function that corrects gradation density to match output paper characteristics. A mode that measures RGB (secondary colours) as well as CMYK as target colours has been added to further enhance the accuracy.



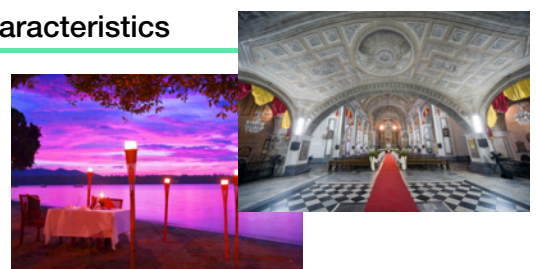
### Auto-refining Development

A new carrier is supplied together with the toner to refresh the carrier in the developer, stabilising the developer condition to maintain lifelong high quality images.

## ▶ Colour management that make the most of outstanding Colour Reproduction Capabilities

### Three Modes that take advantage of High Chroma Toner Characteristics

- Standard mode** ▶ Taking advantage of the wide colour gamut, colours close to those on the monitor screen are reproduced during printing using RGB data. For printing from CMYK data, colour tones close to offset printing are provided.
- Saturation mode** ▶ Optimum advantage is taken of the wide colour gamut of High Chroma Toner to provide impactful images with enhanced saturation.
- Soft mode** ▶ Colour gradations are softened to improve reproduction of elements such as hair shadows.



## ▶ Outstanding Media Compatibility for Expansion of Printing Services

### 300gsm automatic duplex printing

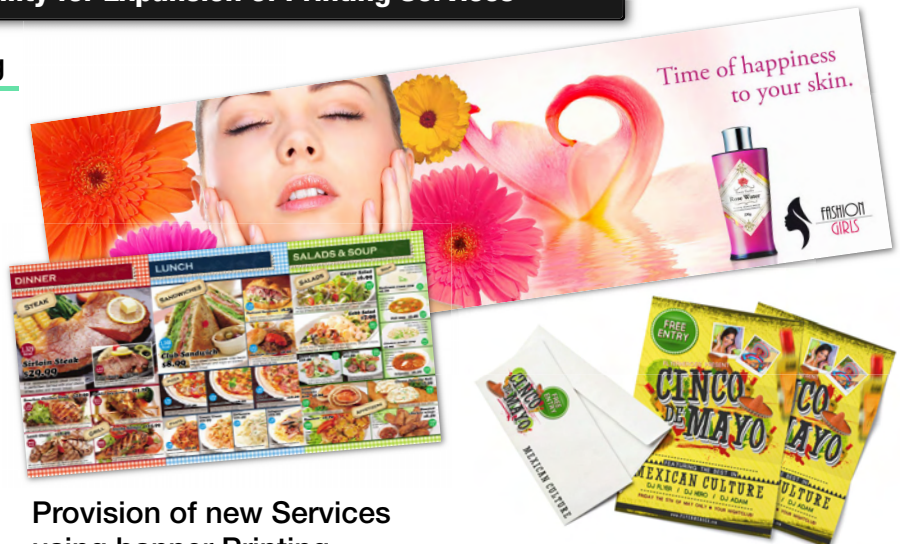
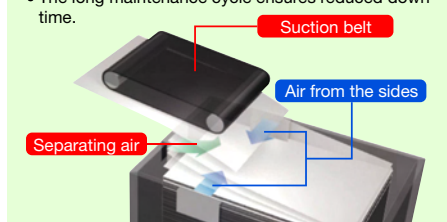
Capable of automatic duplex printing using paper of the maximum thickness, bizhub PRESS C71hc comes into its own when creating sales promotion tools using thick paper such as menus and photo books.

### Air Suction Paper Feeder

bizhub PRESS C71hc is furnished with a top class air suction paper feed system that allows worry-free usage of thick paper, paper with slippery coatings and other paper types that present difficulties in feeding.

#### Superiority of Suction Type Paper Feed

- Resistance to the effects of paper dust prevents miss-feeding.
- The long maintenance cycle ensures reduced down time.



### Provision of new Services using banner Printing

bizhub PRESS C71hc's top-of-the-class banner printing ability capable of handling sheets up to 1200mm in length. This enables expansion of the range of usage to provide new services including POPs, panorama photos, letter fold-in menus, double-parallel folded pamphlets and photo books.

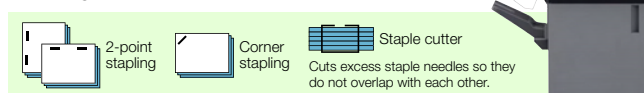
### High-quality, Low-cost envelope Printing

An optional Envelope Fuser Unit can be mounted to enable high-quality printing of general-purpose envelopes at low cost. In addition, use of High Chroma Toner makes it possible to create impactful DMs.

## ▶ Full Lineup of Options to enhance Work Efficiency and realise short Lead Times

### All-in-one Finisher [FS-532]

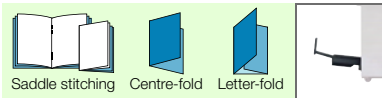
In addition to basic performance provided by the 100-sheet stapling function, options can be added to enable saddle stitching, punching and post insertion in a compact space.



#### Expansion Options

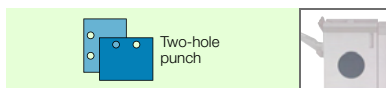
#### • Saddle stitcher [SD-510]

Use for saddle stitching, multi-letter-fold and centre-fold.



#### • Punch Kit [PK-522]

Two- to four-hole punching for paper up to 300 gsm.



#### • Post Inserter\* [PI-502]

Add cover sheets and insertion sheets. Includes settings for two types of paper.



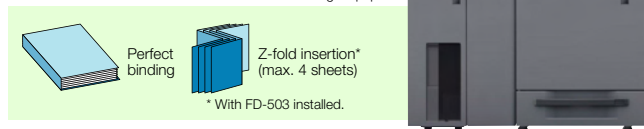
\* Mount Kit [MK-732] is required to install the Post Inserter.

\* Installation may not be possible depending on the combination of the above options.

### Perfect Binder [PB-503]

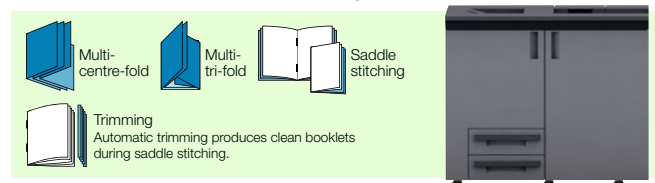
Perfect binder with the top-of-the-class bookbinding capability of 600-page\*.

\* 80gsm paper



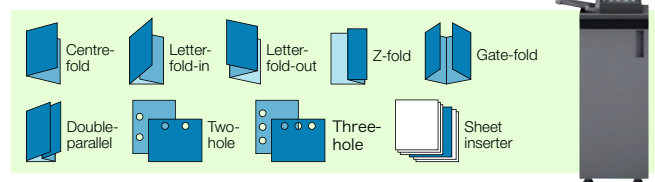
### Saddle Stitcher [SD-506]

Top-of-the-class saddle stitching of 200-page booklets is possible. A trimmer is also furnished as standard. In addition, the saddle stitcher is also capable of multi-tri-fold processing. \* 80gsm paper



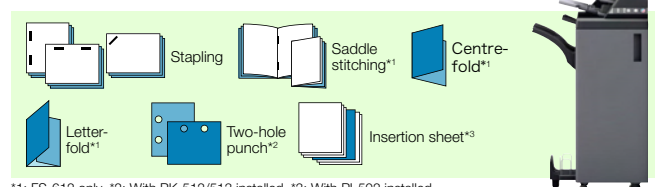
### Multi-folding Unit [FD-503]

The FD-503 is furnished with folding, punching and post-inserter functions. The folding function in particular is capable of gate-folding and comes into its own for production of items such as DMs and pamphlets.



### Stapling Finisher [FS-531/FS-612]

The FS-531 finisher is capable of side stitching of a maximum of 50 sheets\* while FS-612 is furnished with two folding functions (centre folding and letter folding) as standard in addition to saddle stitching of up to 20 sheets\*. If necessary, processes such as punching and cover sheet insertion can also be automated. \* 80gsm paper



# Specification

## bizhub PRESS C71hc General Specifications

### Main Unit

Type	Console
Colour Support	Full colour
Writing Resolution	1,200 dpi (Equivalent to 3,600 dpi) x 1,200 dpi
Gradation	8-bit / 256 gradation
CPU	Core i5 2400 3.1 Ghz
Memory	2GB
Max. Printing Area	323 mm x 480 mm
Paper Size	Standard: SRA3, SRA4, A3, B4, A4, B5, A5 portrait, Irregular size (max.: 330 mm x 487 mm, min.: 140 mm x 182 mm)*1 Multi-bypass (Option): SRA3, SRA4, A3, B4, A4, B5, A5, B6 portrait, Postcard, Irregular size (max.: 330 mm x 487 mm*2, min.: 100 mm x 148 mm)
Image Loss	Max. 4.0 mm or less for top edge, Max. 4.5 mm or less for bottom edge, Max. 3.0 mm or less for right / left edges
Warm-up Time	390 seconds or less (at room temp 20°C, rated power supply)
First Print Time	Black & White : 5.9 seconds or less Full Colour : 7.1 seconds or less
Continuous Print Speed	71 pages/min. (A4 landscape)
Full Colour/Black & White*3	38 pages/min. (A3)
Tray Capacity	Standard: 1,500 sheets (80 gsm) Option: Multi-bypass, 250 sheets (80 gsm)
Paper Weight	62 gsm to 300 gsm (Limitations to paper types apply) Main Unit: 62 gsm to 216 gsm Multi-bypass, PF-707, PF-602m, LU-202: 62 gsm to 300 gsm
Continuous Print Count	Up to 9,999 sheets
Auto Duplex	SRA3, SRA4, A3, B4, A4, B5, A5, B6 portrait, A6 portrait, Postcard, Irregular size (max. 330 mm x 487 mm, min. 100 mm x 148 mm) Paper Weight: 62 gsm to 300 gsm
Power Source	Inch : AC208 to 240V 21A 60 Hz Metric : AC220 to 240V 20A, 50 Hz / 60 Hz
Power Consumption	Inch: 4,900W or less (Main unit only) Metric: 4,700W or less (Main unit only)
Dimensions ( W x D x H )	760 mm x 903 mm x 1,041 mm (Main unit only, control panel not included)
Weight	Approx. 286 kg

\*1: To be fed from Tray-2. \*2: Maximum length 1,200mm with banner printing option MK-740. \*3: Print speed may vary depending on paper type.

## bizhub PRESS C71hc



Model shown is C71hc with options.



For more information, please visit the bizhub Web site at

<http://www.biz.konicaminolta.com/production/c71hc/index.html>



Product appearance, configuration and/or specifications are subject to change without notice.  
This product is not available for some countries or regions.



The KONICA MINOLTA logo, symbol marks, Giving Shape to Ideas, bizhub PRESS are registered trademarks or trademarks of KONICA MINOLTA, INC.

\* All other brand and product names are the registered trademarks or trademarks of the respective companies to which they belong.

\* Due to printing, the colouring of the product as it appears in this catalogue may differ from that of the actual product.

\* The operation panels shown in this catalogue are synthetic simulations.

### ISO15408 (EAL Level 3) Certification

This product complies with the security requirements of ISO15408 (EAL Level 3).

\* The ISO 15408 certification applies only to IT security capabilities. This certification is NOT a product guarantee.



From consulting, system design, to operations, Konica Minolta offers total support to optimise your office output environment.  
<http://www.biz.konicaminolta.com/services/ops>

### ⚠ Requirements for safe use

- Please read and follow the instruction manual to ensure safe operation.
- Only operate using appropriate power supply and voltage.
- Connecting the earth wire to an inappropriate place may cause explosion or electric shock. Please connect accordingly (Taiwan and the Philippines only).

**KONICA MINOLTA, INC.**

2-7-2 Marunouchi Chiyoda-ku, Tokyo, Japan  
<http://www.biz.konicaminolta.com>

9251-3229-01