

RICOH
imagine. change.

Pro™ C9100/C9110

Durable High Volume Digital Presses



Pro™
C9100
110
ppm
Colour
B/W

Pro™
C9110
130
ppm
Colour
B/W

Cost effective, highly efficient digital printing

Competition in the print industry has never been fiercer. As a result, commercial printers need to increase margins and maintain profitability by investing in new technology that is durable and productive for high digital print volumes.

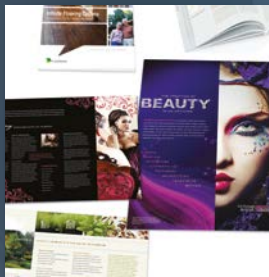
The new generation Ricoh Pro™ C9100 and C9110 is the answer. It is the affordable digital solution that breaks down the cost barriers of entry for printers looking to enter the high-speed digital market or for those who don't have the high monthly volumes needed to justify the cost of competing presses.

The Pro™ C9100 Series can integrate into a hybrid workflow and delivers greater flexibility, superb print quality and higher productivity with faster turnaround performance. It sits alongside existing offset technology to provide variable data and greater media handling capability. This makes high volume jobs cost effective and highly efficient whilst introducing personalisation and customisation options simply not available with offset technology.

- Exceptional print quality
- Maximises productivity
- Outstanding durability
- Extensive media capabilities



Advanced technology for greater productivity



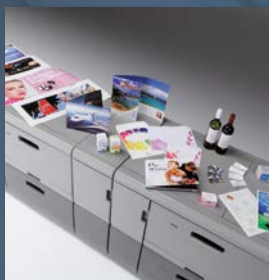
Enhanced VCSEL technology

Ricoh's Vertical Cavity Surface Emitting Laser (VCSEL) technology gives best in class resolution creating razor sharp image quality. Combined with the new processing technologies and larger colour gamut toner, this enables the digital press to deliver exceptional image quality that consistently rivals offset.



Highly productive

Pro™ C9100 models run at speeds up to 110ppm and 130ppm for the Pro™ C9110 based upon A4 (150ppm A4 equivalent when running A3) for maximum output and fast turnaround times.



Extensive media versatility

Benefit from the ability to print onto uncoated, textured and coated media from 52gsm to 400gsm, duplexed banner sheet printing up to 700mm and even speciality media such as super-gloss, magnet, metallic, transparent or synthetic to extend your customer offering.



Extremely durable

Daily use is optimised with the sturdy and durable design of the digital press. They offer a maximum monthly volume of 1 million based on A4. Lifetime reliability is 60,000K or 5 years.

Optimum output. Maximum uptime



High productivity

- At up to 130ppm, it offers high volume capabilities for cost effective output
- All speeds are maintained regardless of paper weight due to the combination of a powerful fuser and integrated cooling system
- Paper handling and print quality is improved by advance toner transfer technology, accurate image registration and new straight paper path for easier media handling

Exceptional image quality

Optimum image quality up to 4800 dpi is ensured by Ricoh's innovative VCSEL technology. VCSEL has as many as 40 laser beams emitting simultaneously to give exceptionally accurate and smooth image quality.



Uptime maximised

- New straight path belt cooling system cools down the media right after fusing to maintain production speed for all media types
- Status Light Pole - can see operational status from a distance
- Operational panel features animations for user ease
- 'One-the-fly' toner replacement enables continuous usage
- Operators can replace Operator Replaceable Units (ORU) for maximum uptime

Expand opportunities for success



Broad media support

- Quickly extend your business expertise to include light packaging, envelopes and direct mail to books, general promotional materials, brochures and business cards
- Supports from 52gsm up to 400gsm
- Duplex banner printing up to 300gsm and 700mm in length
- Textured Media support - new advanced toner transfer technology combined with the new elastic transfer belt technology ensures superior transferability on textured media

Personalised campaigns

Direct mail is a flourishing digital print application as clients and agencies move from standard materials into data-driven, highly targeted, personalised campaigns, which achieve higher response and conversion rates. The Ricoh Pro™ C9100 and C9110 allows you to capitalise on this opportunity that is not available with offset.



Robust dual module design



A power for performance



Robust functionality

Ricoh Pro™ C9100 and C9110 supports advanced external EFI Fiery servers. They have a new user interface and functionality. With ease-of-use enhancements they help simplify file management and job workflow for greater efficiency.

Definitive technology

The Ricoh Pro™ C9100 Series is available with either the EFI E-43 or the faster and more powerful E-83 print server. The latter incorporates a high-performance 3.5GHz up to a 3.8GHz with Turbo Intel Xeon processor, extended 2GB x 8 memory and a powerful 500 GB HDD. They enable you to not only handle complex jobs more easily but also support the finishing options that you can offer to be more competitive and profitable.

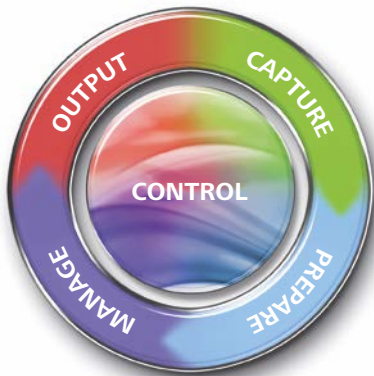


Extensive media library

The unique library holds over 200 profiles tested and proven by Ricoh. There's also a custom library for personalized media profiles along with a back-up capacity for an additional 1,000 profiles. It gives real scope to take advantage of a diverse range of different print opportunities.

It also allows users to adjust and associate different parameters per substrate to ensure image quality and reliability, including different ICC profiles for the front and reverse of a sheet.

Optimise your production environment



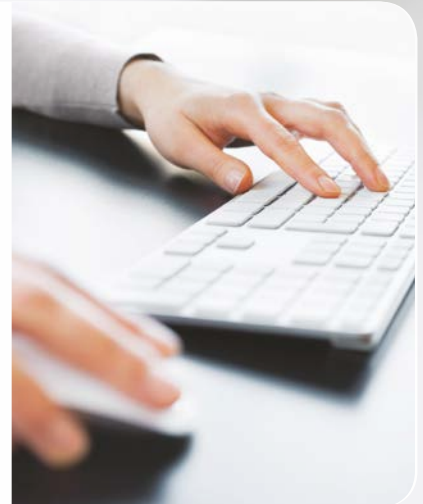
The TotalFlow portfolio

Ricoh TotalFlow brings together an impressive portfolio of powerful software and business solutions to streamline your entire production print process. By identifying your specific needs, it creates the most effective solution that broadens your service proposition and sets new standards of productivity, quality and profitability.

Capture regular and new print opportunities using web-to-print and job submission tools that help you move to a fully automated production process that enable you to interact more efficiently.

Drive print efficiency

Our enhanced TotalFlow suite, which includes Ricoh's TotalFlow Production Manager, TotalFlow Print Manager, TotalFlow Prep and TotalFlow Path, work with both the Ricoh Pro™ C9100 and C9110 to expand the portfolio of workflow solutions for the cut sheet production printing market.



Versatile, scalable, complete control

These versatile software solutions ensure that the print run can be controlled at all times, enhancing productivity and improving efficiency. When combined with their exceptional, feature-rich capabilities, the Ricoh Pro™ C9100 and C9110 enables commercial printers to meet the evolving needs of the customer.

New options. New opportunities

New Vacuum Paper Feed and Bridge Unit

- Vacuum feed for the reliable delivery of even the most demanding media
- Air blast assisted to the front and sides to ensure reliable sheet separation
- Offers high level of feeding accuracy for greater productivity
- Up to 3 units can be attached
- Supports media weight from 52gsm up to 400gsm



New Banner Sheet Tray

- Attaches to the upper tray of the Vacuum Paper Feed
- Paper capacity: 210 - 330mm x 420 - 700mm
- Media weight 52 up to 300gsm
- Up to 730 sheet capacity dependent on media thickness
- Tray to support Banner Sheet for the Finisher included



New High Capacity Stacker

- This new option stacks up to 5,000 sheets (SRA3, A4, LT size) on shift tray and 250 sheets on one proof tray
- Up to two stackers can be attached
- Includes roll-away cart as standard
- Ensures ease of high volume outputs



More advantages and benefits



Multi-Bypass Tray

- Paper size: 100 - 330mm x 139 - 487mm
- Media weight 52 up to 216gsm
- Up to 500 sheet capacity dependent on media thickness

Multi-Folding Unit

- Offers six options for paper folding
- Supports from 64gsm to 105gsm including coated paper
- For 2-Fold, 3-Fold In and 3-Fold Out, multi-pages folding is available up to three pages from 64-89gsm
- Ideal for Direct Mail opportunities



Standard Finisher and Booklet Finisher

- (Without saddle Stitch) this finisher also offers Punch option
- Stack capability: media up to 330 x 487mm
- Media weight: 52 up to 400gsm
- Up to 2,500 sheets on Shift Tray (A4/LT, 80gsm)
- 100 sheets staple (B5-A3/215 x 279 - 279 x 431mm, 80 gsm)
- Booklet Finisher offers the same stack capacity with 20 sheet booklet (B5-SRA3/215 x 279 - 330 x 487mm, 90gsm)
- Booklet Finisher has one-side edge trimmer as an option
- Enables creation of professional booklets

Increase your Direct Mail output



Ring Binder

- Fully automates binding workflow, saving time and labour costs
- Easy of operation as the system processes from printing to closing rings without manual intervention
- Operator can prepare for the next job whilst the system runs itself
- Two sizes of consumable rings are available for 50 or 100 sheets
- Cartridge ring holds up to 75 sets and easy to refill
- Black/white coloured rings available

Plockmatic Booklet Maker

- 50 sheet or 35 sheet Production Booklet Making System (80gsm paper)
- Creates high quality 200 page (or 140 page) saddle-stitched and square folded booklets at rated engine speed
- Optional Bleed trim and creasing capabilities eliminate manual processing
- Supports up to 300gsm media - coated or uncoated - for a wide range of applications
- A newly designed precision face trimmer module allows you to trim the shingle effect off the booklet as required for a clean, professional look
- Off-line mode enables manual booklet making from documents produced on other devices



GBC StreamPunch Ultra

- Wide media range - up to 300gsm
- Tab processing on the trailing edge of the sheet
- World's first 'Double Punch' capability
- New Die Set design

The options for success



1 Pro™ C9100/C9110

2 Colour LCD Panel

3 New Vacuum Paper Feed and Bridge Unit (option)

4 New High Capacity Stacker (option)

5 Multi-Bypass Tray
(Banner Sheet Tray option)

6 Booklet Finisher

New Banner Sheet Tray (option, not illustrated)

Standard Finisher (not illustrated)

Booklet Trimmer (option, not illustrated)

Ring Binder (option, not illustrated)

Perfect Binder (option, not illustrated)

2 Tray Cover Interposer (option, not illustrated)

Plockmatic Booklet Maker (option, not illustrated)

GBC StreamPunch Ultra (option, not illustrated)

Multi-Folding Unit (option, not illustrated)

Pro™ C9100/C9110

MAIN SPECIFICATIONS

GENERAL

Technology:	4-drum dry electrostatic transfer system with internal transfer belt
Fusing:	Oil less belt-fusing method
Toner Type:	New chemical toner
Print Speed:	Pro™ 9100 FC (CMYK)/BK 110PPM Pro™ 9110 FC (CMYK)/BK 130PPM
Print:	Max 1200 x 4800dpi VCSEL
Warm-up time:	Less than 420 sec.
Dimensions (WxDxH)	2,520 x 990 x 1,500mm (H:1,870mm include status pole)
Weight:	Less than 1,000kg
Power Source:	220-240V, less than 60A (30A x2), 50/60Hz
Power Consumption:	Less than 9000W
Duty Cycle:	1,750K per month

MEDIA HANDLING

Paper Input Capacity:	Standard: 1st tray: 2,200 sheets 2nd tray: 2,200 sheets (Optional) Vacuum Feed LCT: 3rd-8th Tray: 2,200 sheets each (Optional) Multi-Bypass Tray: 550 sheets
Max. Output Capacity:	1,000K per month
Max Printable Area:	330mm x 700mm (when using Banner Sheet Tray Option)
Paper Weight:	1st tray 52-400g/m ² 2nd tray 52-400g/m ² Vacuum Feed LCT: 3rd-8th tray 52-400g/m ² Banner 52gsm – 300g/m ² (Optional) Multi-Bypass tray unit: 6th tray 52-216g/m ² Duplex: 52-400g/m ²

COLOUR CONTROLLER

E-43	
Configuration:	External
System Version:	Fiery System FS150Pro
CPU:	Intel i5-4570 (2.9GHz up to 3.6GHz with Turbo)
Memory:	2GB x 2
HDD:	1TB x1 SATA
CD-ROM Drive:	Supported DVD-RW
Operating System:	Windows 7 Professional for Embedded Systems x64

E-83	
Configuration:	External
System Version:	Fiery System FS150Pro
CPU:	Intel Xeon (Quad-Core) Xeon E5-2637 (3.5GHz up to 3.8GHz with Turbo)
Memory:	2GB x 8
HDD:	1TB x2 SATA / RAID 0 (for data) 500GB SATA (for OS)
CD-ROM Drive:	Supported DVD-RW
Operating System:	Windows 7 Professional for Embedded Systems x64

OTHER OPTIONS

Optional: Vacuum Paper Feed RT5100, Bridge Unit BU5010, Vacuum Feed Banner Sheet Tray Type S3, Multi-Bypass Tray Unit (BY5010), Multi-Bypass Banner Sheet Tray Type S3, 3,000 Sheets Finisher With 100 Sheets Stapler (SR5050), Booklet Finisher (SR5060), Cover Interposer Tray (CI5030), Ring Binder (RB5020), Perfect Binder (GB5010), Multi-Folding Unit (FD5020), Booklet Trimmer (TR5040), High Capacity Stacker (SK5030).

WORKFLOW SOLUTIONS

EFI™ Digital StoreFront®, EFI™ Color Profiler Suite, EFI™ Fiery® Graphic Arts Package Premium Edition, EFI™ SeeQuence Compose, SeeQuence Impose, SeeQuence Suite, DirectSmile®, EFI™ Fiery® Central, Objectif Lune PlanetPress, Ricoh TotalFlow: PTI FusionPro®, MarcomCentral®, TotalFlow BatchBuilder, CGS ORIS Lynx & PressMatcher, Ricoh Process Director Express®, Prep, Print Manager, Production Manager & Path.

ENVIRONMENTAL INFORMATION

Pro C9100/C9110 comply with Energy Star 2.0 standards.

Please Note: Unless stated otherwise the data used in this brochure is based on A4 80gsm Standard Media.



RICOH
imagine. change.

www.ricoh-europe.com

ISO9001 certified, ISO14001 certified.

All brand and/or product names are trademarks of their respective owners. Specifications and external appearance are subject to change without notice. The colour of the actual product may vary from the colour shown in the brochure. The images in this brochure are for illustration purposes only, slight differences in detail might appear.

Copyright © 2014 Ricoh Europe PLC. All rights reserved. This brochure, its contents and/or layout may not be modified and/or adapted, copied in part or in whole and/or incorporated into other works without the prior written permission of Ricoh Europe PLC.