

SHARP®

DYNAMIC PERFORMANCE WITH EXCEPTIONAL OPERABILITY



MX-4140N MX-4141N
MX-5140N MX-5141N



The MX-4140N/4141N/5140N/5141N provides your business with the tools you need to gain the competitive advantage.

FULL-COLOR LEDGER-SIZE WORKGROUP DOCUMENT SYSTEMS

Reliability

Sharp's new MX-4140N/4141N/5140N/5141N color series document systems combine the simplicity of touch-screen menu navigation with robust multi-tasking workflow features that can help virtually any office accomplish more in less time. A large 10.1" (diagonally measured) high-resolution, tilting touch-screen display offers groundbreaking real-time image preview with intuitive flick-and-tap editing to help ensure your documents are produced accurately and without waste. This new series also offers many advanced features such as a fully customizable home screen, dynamic action menus that provide feature-specific guidance, and a full-size retractable keyboard for easy data entry. Plus, with Sharp's enhanced second-generation micro-fine toner technology and true 1200 x 1200 dpi print resolution, this new series can help your business produce professional looking color documents in-house with breathtaking image quality that is also economical. The new MX-4140N/4141N/5140N/5141N color series has been built on the latest Sharp OSA® development platform, making integration with network applications and cloud services easier than ever. And with Sharp's industry-leading security platform with standard 256-bit data encryption and overwrite protection, you can rest assured that your intellectual property is well protected.



VERSATILE

MULTI-FUNCTIONAL

POWERFUL

MULTI-TASKING

INTUITIVE

Advanced features plus multi-functional capability allow you to meet tomorrow's document needs today.

- Large 10.1" (diagonally measured) high **resolution touch-screen display** offers **real-time image preview** feature with flick, tap and slide navigation, and pinch-and-zoom capability to shrink and enlarge images
- Fully **customizable home screen** feature enables users to add **custom backgrounds** and **icons**, change the display language and more
- **2,000-sheet tandem paper drawer option expands** maximum online paper capacity to **6,600 sheets**
- **Flexible paper handling** system feeds up to **80 lb. cover** through the paper trays and up to **110 lb. cover** through the bypass tray



- Scan both sides of a document in a single pass at up to 170 IPM with the standard **150-sheet duplexing document feeder** (standard on the MX-4141N/5141N)
- **Compact PDF** feature dramatically reduces the file size of scanned color documents, resulting in decreased network traffic and more **efficient use of disk and cloud storage** (standard on the MX-4141N/5141N).
- Full-size, **retractable keyboard** allows quick, easy and accurate data entry (standard on the MX-4141N/5141N)
- **1200 x 1200 dpi printing** provides clear, crisp images even on jobs with fine detail
- Network ready **PCL®6** and true **Adobe® PostScript®3™ printing systems** with **direct print** function and available **XPS** option (standard on the MX-4141N/5141N)
- **Standard Wireless LAN** connects to your network or allows users to print to and scan from the device via **Sharpdesk® Mobile**
- **Web Browser** feature with built in **PDF Viewer** allows easy access to web-based information and applications (standard on the MX-5141N)
- Supports the latest **Sharp OSA development platform**, enabling businesses to easily integrate with **network applications and cloud services**
- Supports Sharp's **award-winning** security platform with **standard 256-bit data encryption**, up to 7 times **overwrite protection**, and convenient **End-of-Lease** feature

REVOLUTIONARY MFP FEATURES TO STREAMLINE YOUR WORKFLOW



Full-size retractable keyboard simplifies data entry.*



Easily edit documents in scan preview mode.



Intuitive copy screen shows options on the left and menu guidance on the right.



Available paper capacity stores up to 6,600 sheets.

Flexible design to meet the needs of your environment.

A Smart Touch-Screen Helps You Get Your Work Done Fast

The new MX-4140N/4141N/5140N/5141N color workgroup document systems feature a **10.1"** (diagonally measured) **high-resolution LCD** that goes beyond basic touch-screen menu navigation. With advanced features that include **flick, tap, slide, pinch and zoom**, you can quickly access the powerful functions of this new series. In addition, a **tilting display panel** provides enhanced accessibility. A built-in full-size retractable keyboard makes data entry quick and easy.*

Easily Check and Edit Your Original Document

Save time and help reduce waste by correctly executing your copy or scan job the first time. With Sharp's **real-time scan preview and edit** functions, you can quickly rotate or delete pages, insert blank sheets, remove artifacts, change the color mode, even check the staple position before executing your job. Dynamic action menus provide **feature-specific guidance**, so it is easy to determine your choices for each operation. For comprehensive, step-by-step instructions on any operation, simply open the **on-line user manual** and navigate to the feature you need.

High Image Quality You Expect with the Performance You Need

The new MX-4140N/4141N/5140N/5141N color workgroup document systems utilize a powerful multi-tasking controller designed to quickly execute complex copy, print and scan jobs even in busy office environments. Plus, with print speeds of **41** and **51 pages per minute**, this new series can help elevate your office productivity to new heights. With **1200 x 1200 dpi** print resolution and Sharp's enhanced second-generation micro-fine toner technology, your business can produce professional looking color documents with breathtaking image quality.

Flexible Configurations for Today's Unique Office Environments

This new series offers a flexible paper handling system that includes an available 2,000-sheet tandem paper drawer. With **rugged paper tray handles** for easy access and available **on-line paper capacity for up to 6,600** sheets, the machine is ready when you are. A standard 150-sheet duplex single pass feeder (on the MX-4141N/5141N), 100-sheet reversing single pass feeder (on the MX-4140N/5140N) combined with automatic trayless duplexing, electronic sorting and integrated offset stacking, allow you to complete even large jobs in a snap.

Advanced Finishing Adds the Final Touch

This series offers a choice of **four high-performance finishers** that can give your documents a professional look and feel. Choose from a **compact inner finisher**, a floor-standing 1K **saddle-stitch finisher**, a 4K saddle-stitch finisher or a 4K stacking finisher. All finishers offer three-position stapling and an available 3-hole punch.

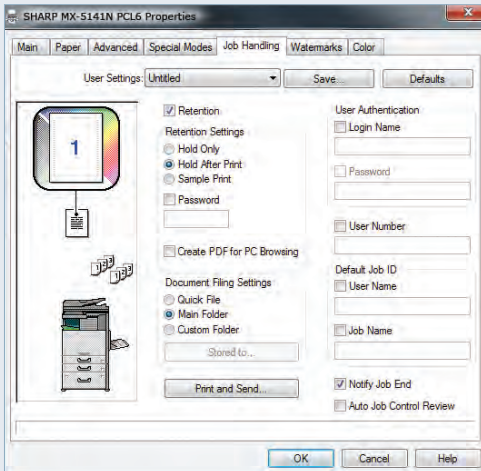


MX-5141N shown with saddle-stitch finisher and optional MX-LC11.



MX-5141N shown with compact inner finisher.

*Standard on the MX-4141N/5141N.



With Sharp's advanced job handling, you can retain print jobs on the hard drive for reprinting at a later date.



Sharp's integrated network scanning offers one-touch document distribution to multiple destinations.



Sharp's Document Filing System with thumbnail preview makes it easy to locate and retrieve stored jobs.

Advanced technologies deliver outstanding output quality and flexible document distribution at your fingertips.

Exceptional Print Quality with Professional Looking Output

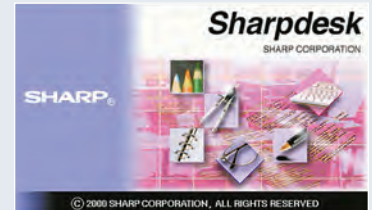
With the MX-4140N/4141N/5140N/5141N color series, your business can produce brilliant, high-color documents, as well as razor-sharp B&W documents. Plus, with **1200 x 1200 dpi resolution**, even documents with fine detail will look great! Easy-to-use print drivers allow you to set up complex jobs with just a few mouse clicks. The standard **Adobe® PostScript® 3™ driver** delivers extensive color control options, so you can manage color consistency right from your desktop. For even more flexibility, add the **optional XPS kit**. With Sharp's **advanced job retention** features, jobs can be stored on the hard disk drive to be reprinted again and again by walk-up users or from the embedded web page.

Integrated Network Scanning

With Sharp's powerful **ImageSEND** technology, you get one-touch distribution features that help centralize document workflow, reduce mail costs and save time. With **multiple destinations** including E-mail, Desktop, FTP, Network Folders (SMB and Home Directory), USB, Fax and Internet Fax, getting your document where it needs to go is as easy as pushing a button. High-volume workgroups will appreciate the **Send to Group** mode that allows users to broadcast to a mixed group of E-mail, Fax, and Internet Fax destinations for increased efficiency.* Convenient **Scan to Me** function lets logged-in users send scanned files to their own E-mail address simply by pressing the Start button, eliminating the need to enter or select an address and thereby preventing documents from being sent to the wrong destination.

Convenient E-mail Distribution and Document Management

With Lightweight Directory Access Protocol (LDAP), there's no need to manually enter a recipient's complete E-mail address. Simply enter the first few characters and it automatically searches and displays a list of matching names. And with **Sharpdesk®** personal document management software and the available Sharp OSA Network Scanner Tool (NST), users can easily organize their scanned documents and integrate them into everyday workflow.



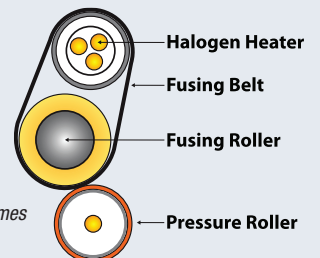
Sharpdesk personal document software

Innovative Document Filing System for Easy Access

Sharp's easy-to-use **Document Filing System** provides a hard disk drive to **store frequently used files** like forms, templates and reports. With **thumbnail preview** mode, stored jobs can be located and retrieved quickly. An advanced backup system and PIN-access security helps ensure your files are safe. For critical environments, an optional **back-up hard disk drive** is available.

Advanced Energy Saving Features

This new color series utilizes several energy efficient technologies to minimize power consumption and maximize energy savings. An **LED exposure lamp** reduces power significantly when compared to conventional exposure lamps. A customizable seven-day power management scheduler allows businesses to define the days and times when power will be turned on and turned off. Also, with Sharp's **Auto Power Management** function the MFP can be set to shut-off automatically based on usage trends. Sharp's **Eco-Scan** mode can **shut off the fuser** when scanning documents, previewing images, faxing and other operations. A state-of-the-art **belt fusing system** consumes less power, shortens warm-up time and helps eliminate roller marks sometimes caused by conventional fusing.



State-of-the-art belt fusing system consumes less power and shortens warm-up time.



*Some features require optional equipment.



Streamline your document workflow and enhance productivity with Sharp OSA technology.

Integrating with Network Applications and Cloud Services Has Never Been So Easy

With standard Application Communication and External Accounting modules, the MX-4140N/4141N/5140N/5141N color series offers **powerful document workflow capabilities** to help businesses leverage their network infrastructure, cloud-enabled services and more.* While others are limited to a small circle of productivity, the Sharp OSA development platform allows businesses to leverage the power of their network applications, back-end systems, even cloud-enabled services, right from the touch-screen panel of this new series.

Save Time, Increase Efficiency

You'll save time and increase the efficiency of everyday tasks with Sharp OSA technology because it can be virtually seamless to the user. Any MX-4140N/4141N/5140N/5141N anywhere in the organization can display choices that were once only available on a desktop PC. With **one-touch access** to business applications via Sharp OSA integration, you can start and finish a document distribution task without worry.

**Some features require optional equipment.*

Customized Integration

Sharp OSA technology also provides **powerful customization**. With the ability to personalize applications and processes specific to your business, Sharp OSA technology can help eliminate redundancy and **streamline workflow**, helping to save time and **optimize productivity**. The latest version of Sharp OSA technology can reach beyond the firewall, enabling cloud-based applications over the Internet. And since Sharp OSA technology utilizes industry-standard network protocols such as SOAP and XHTML, third party software developers can deliver customized solutions to your business faster than ever.

The Convenience You Want with the Security You Need

The MX-4140N/4141N/5140N/5141N color series with the Sharp OSA development platform is the logical choice for providing fast, **flexible access to documents and applications**...no matter where you are in the office. You also get the controlled access and tracking ability you require with tighter integration capabilities for network security and accounting applications.



ADVANCED DEVICE MANAGEMENT TOOLS MAXIMIZE EFFICIENCY

The MX-4140N/4141N/5140N/5141N color series document systems enhance operational efficiency through versatile device management capabilities.



Sharp Remote Device Manager (SRDM)*

Make management of your MX-4140N/4141N/5140N/5141N simple and straight forward with Sharp Remote Device Manager (SRDM). This easy-to-use software allows you to take control of the versatile system features and simplifies installation and management.

- With **Printer Status Monitor**, network users can view printer conditions, check paper levels, toner, and more, all through an easy-to-use interface.
- With Sharp Remote Device Manager, administrators can easily manage the setup, configuration, device settings, cloning and more. Advanced features such as **Remote Front Panel** allow administrators and support personnel to view and control the LCD panel of the machine remotely from virtually any PC on the network. Plus, with event-driven, real-time service alerts, administrators and supervisors can achieve higher productivity. Now it is easier than ever to view service logs, click counts, history reports and more.
- Experience the convenience of an **Embedded Web Page** right from your desktop. This advanced web-based management tool allows users to create and manage their own network scanning destinations, profiles and web-links. Administrators can access device settings, color control, account information and security settings.

Take Charge of Color Usage and Costs

With Sharp's device management system, administrators and supervisors can **define user groups** on the MX-4140N/4141N/5140N/5141N to manage and restrict features, such as color copying, scanning or printing. Easily set up a custom user group to manage page counts (copy, print, scan or fax operations) for both color and B&W. This helps to simplify cost management of color imaging. The MX-4140N/4141N/5140N/5141N can store profiles for up to 1,000 users.

24/7 Training with My Sharp™

Managing all of the advanced features of your Sharp product is simple and easy. Ask your Authorized Sharp Dealer about the **My Sharp** website. This dedicated customer training website is customized to your MX-4140N/4141N/5140N/5141N and allows you to locate resources and find information specific to your configuration, truly helping you maximize your investment.



Remote Front Panel



Embedded Web Page

**Not available at time of launch.*



To help protect your data, the MX-4140N/4141N/5140N/5141N offers several layers of **standard security**, making Sharp the optimum choice to help protect employees' privacy and intellectual property.* As a leader in office equipment security, Sharp makes it easy for virtually any business or government entity to safely deploy digital copying, printing, scanning and faxing.

Authority Groups

Advanced account management enables administrators to set authority groups for access to features of the MX-4140N/4141N/5140N/5141N. Administrators can control which department, for instance, has full access to copying, printing, scanning and/or fax. Walk-up users enter a Code, Local Name and Password, or LDAP User Authentication to access the features assigned to their group.

Data Overwrite and Encryption

To help protect your data, the MX-4140N/4141N/5140N/5141N can encrypt document data using **AES (Advanced Encryption Standard) 256-bit encryption**. The MX-4140N/4141N/5140N/5141N can also erase the temporary memory on the hard drive by overwriting the encrypted data up to seven times, offering an unprecedented level of assurance. A convenient **End-of-Lease** feature overwrites all data, including document filing, user data, job status, date and address book.

Network Scanning Access Control

To help protect your network from unauthorized E-mail communications, the MX-4140N/4141N/5140N/5141N supports **User Authentication**, requiring users to login before performing any network scanning operations.

Control Device Access Over the Network

To help restrict access to the device over the network, the MX-4140N/4141N/5140N/5141N offers IPsec, SMB and extended support for **SSL Encryption** (Secure Sockets Layer), **IP/MAC address** filtering, IEEE 802.1x authentication, protocol enable/disable and port management for maximum security.

**Some features require optional equipment and/or software.*

Documents Remain Confidential

The MX-4140N/4141N/5140N/5141N offers **Confidential Printing**, which when used, requires users to enter a PIN code in order to print a queued document. To help protect your direct-print documents from unauthorized viewing, the MX-4140N/4141N/5140N/5141N offers encrypted PDF printing and scanning. Additionally, **Secure Fax Release** ensures received fax documents are held in memory until an authorized user enters a PIN code, so that compliance with healthcare regulations such as the Health Insurance Portability and Accountability Act (HIPAA) is easier.

Tracking and Auditing Information

Legislation and industry policies require companies to be more aware of information flow from their offices. Sharp offers both built-in and additional hardware/software which allows users to control, access and track usage of each device on the network.

Data Security Kit (Optional)

For maximum protection, the optional data security kit offers additional features, such as Data Overwrite On-demand and at Power Up, Document Filing access control, Incorrect Password Lockout, Restricted Status Display and List Printing.

These scalable security offerings aim to protect your intellectual property, preserve confidential information and help your business to meet regulatory requirements such as HIPAA, and the Gramm-Leach-Bliley Act (GLB). For additional information visit: www.sharppusa.com/security.

ENVIRONMENTAL COMMITMENT



An Environmentally Responsible Approach to Product Design

The MX-4140N/4141N/5140N/5141N utilizes Sharp's advanced micro-fine toner technology, which offers a lower consumption rate and produces less waste than conventional toners, resulting in longer replacement intervals. Sharp supplies are packaged using fully recyclable materials. Long-life consumable parts help minimize service intervals and down time, resulting in lower operating costs. With two different energy saving modes, power can be reduced or shut off at set intervals. All Sharp document systems are ENERGY STAR® qualified and RoHS compliant to restrict the use of hazardous substances.

Toner Recycling Program

As part of our commitment to helping preserve the environment, Sharp offers our customers zero-waste-to-landfill recycling for all Sharp consumables, including cartridges, bottles, toner collection containers and drum units. Sharp encourages customers to recycle their used Sharp toner cartridges in bulk by providing a pre-paid Recycling Kit for their return to our facility.

Environmental Leadership

As a testament to our commitment to the environment, Sharp is a three-time winner of the ENERGY STAR annual Excellence in Energy Proficiency Product Design. Sharp is also a four-time winner of the SmartWay® Excellence Award, which recognizes companies for conserving energy and lowering greenhouse gas emissions in logistics and transportation. Sharp was also a previous recipient of the Excellence in Partnership Green Contractor Award and the Evergreen Award from the General Services Administration (GSA) and the Coalition for Government Procurement. These awards recognize environmentally responsible businesses and their efforts on recycling, waste reduction and affirmative procurement practices.

Global Initiatives

Sharp is committed to environmental sustainability and corporate responsibility including planning, design, manufacturing, distribution and product end-of-life management. For more information about Sharp's environmental leadership including information about energy efficient products, electronics or toner cartridge recycling, please visit www.sharppusa.com/environment.

MX-4140N/4141N/5140N/5141N SPECIFICATIONS

Main Specifications

MX-4140N/4141N/5140N/5141N	Base models include multitasking controller, 100-sheet RSPF (MX-4140N/5140N)/150-sheet DSPF (MX-4141N/5141N), PCL [®] 6 and Adobe [®] PostScript [®] 3™ printing systems, network scanning, auto duplexing, 2 x 500-sheet paper drawers, 100-sheet bypass tray. Black and color developer is included.			
Type	Color multi-function digital document system			
Display	10.1" (diagonally measured) color dot matrix high-resolution touch panel tilting display. 1024 x 600 dots (W-SV/GA).			
Functions	Copy, print, network print, network scan, document filing and fax ¹			
Copy System	Dry electrostatic transfer/Dual component developer/Magnetic brush development/OPC drums/Belt type fusing/white LED exposure			
Originals	Sheets and bound documents			
Max Original Size	11" x 17"			
Copy Size	Min. 5½" x 8½", Max. 11" x 17" + 12" x 18"			
Copy Speed	41/51 ppm B&W/Color (8½" x 11")			
Multiple Copy	Max. 999 copies			
First Copy Time	MX-4140N	MX-4141N	MX-5140N	MX-5141N
Seconds²	Black Color	Black Color	Black Color	Black Color
	Platen Glass 4.7 6.7	4.7 6.7	4.1 5.7	4.1 5.7
	Doc. Feeder 7.7 9.8	7.4 10.3	7.0 8.8	6.7 9.2
Warm Up Time	30 seconds or less ²			
Magnification	25% to 400% in 1% increments (with document feeder 25%-200%)			
Original Feed	MX-4140N/5140N: 100-sheet RSPF/MX-4141N/5141N: 150-sheet DSPF with original size detection.			
Scan Speed	RSPF Copy/Scan: Up to 51 IPM ² simplex/20 IPM duplex DSPF Copy: Up to 85 IPM ² simplex (B&W)/51 IPM simplex (Color) DSPF Scan: Up to 170 IPM ² duplex (B&W/Color)			
Original Sizes	5½" x 8½", 8½" x 11", 8½" x 11" R, 8½" x 14", 11" x 17"			
Paper Capacity	Standard: 1,100 Sheets/Maximum: 6,600 Sheets			
Paper Feed System	Standard: (2) 500-sheet paper drawer (letter/legal/ledger/statement size) and 100-sheet bypass tray (letter/legal/ledger/statement/envelope size). Optional: Single or double drawer paper deck (500 or 1,000 sheets), tandem paper drawer (2,000 sheets), letter/legal/ledger/statement size.			
Paper Weights and Types	Paper drawers: 16 lb. bond to 80 lb. cover. Other paper types include plain, pre-printed, recycled, pre-punched, letterhead and color paper. Bypass tray: 16-28 lb. bond (plain paper), 13-16 lb. bond (thin paper), 80-110 lb. cover (heavy paper), 20-24 lb. bond (Monarch/Com-10 envelope), tab paper (letter). Also label paper, gloss paper, pre-printed, recycled, pre-punched, letterhead, color paper and OHP film.			
Duplexing	Standard automatic duplex copying and printing			
CPU	Up to 1.8 GHz multi-processor design			
Interface	RJ-45 Ethernet (10/100/1000Base-T), USB 2.0 (2 host ports, front and rear), USB 2.0 (1 device port, rear)			
Memory	Standard 4 GB copy/print (shared)/Hard Disk Drive: 320 GB			
Hard Disk Drive	320 GB			
Copy Resolution	Scan: B&W/color: 600 x 600 dpi; Copy Output: B&W/color: 600 x 600 dpi			
Auto Color Modes	Auto Color Selection (ACS), Full Color Mode, Monochrome (B/W)			
Exposure Control	Modes: Automatic, Text, Text/Photo, Text/Printed-Photo, Printed-Photo, Photo, Map, Pale-Color Document. Settings: Auto or 9 step manual 256 gradations/2 levels (monochrome)			
Halftone	256 gradations/2 levels (monochrome)			
Copy Features	Scan-Once Print: Many, electronic sorting, offset-stacking, Auto Color Selection (ACS), Auto Paper Selection (APS), Auto Magnification Selection (AMS), Auto Tray Switching (ATS), black-white reversal, blank page skip, book copy, book divide, card shot, center erase, centering, cover pages, dual page copy, edge erase, image edit, image preview, insert pages, job build, job programs, margin shift, mirror image, mixed size original, multi-page enlargement, original count, pamphlet style, proof copy, repeat layout, reserve copy, rotated copy, stamp, stamp custom image, suppress background, tab copy, tab-paper insertion, tandem copy, toner save mode, transparency inserts, watermark, 2-in-1 / 4-in-1 / 8-in-1 multi shot			
Account Control	Up to 1,000 users. Supports user-number authentication, login name/password or login name/LDAP password			
Output Tray	Main output tray (top): 400 sheets (face down); optional right side exit tray: 100 sheets (face down)			
Capacity	Flash ROM with local (USB), network update capability and firmware update 1 to N with SRDM (Sharp Remote Device Manager)			
Firmware Management	Web-based management/cloning with user/administrator level login			
Service/Functions	Remote front panel, remote access to service logs and click counts			
Accessibility	Tilt front panel, adjustment of key touch sound and speed, concave key, document feeder free stop, job programs, remote front panel, universal grip for paper trays, and disable screen timeout			
Features	International Energy Star Program Ver. 2.0, Canadian EcoLogo Program (CCD-035), Blue Angel (RAL-UZ171), European RoHS			
Environmental Standards	AC 100-127 VAC, 60 HZ, 16 Amps			
Power	Power Consumption 1.92 kW or less			
Weight	MX-4140N/5140N: Approx. 262 lbs./MX-4141N/5141N: 278 lbs.			
Dimensions	Approx. 25 ½" (w) x 30" (d) x 38" (h)			

Network Printing System

PDL	Standard PCL [®] compatible 6, PostScript [®] 3™, optional XPS
Resolution	1200 x 1200 dpi
Print Speed	41/51 pages per minute (8½" x 11")
Print Drivers	Windows XP, Windows XP x64, Windows Server [®] 2003, Windows Server [®] 2003 x64, Windows Server [®] 2008, Windows Server 2008 x64, Windows Vista [®] , Windows Vista x64, Windows 7, Windows 7 x64, Windows 8, Windows 8 x64, Windows Server 2012 x64, Windows PPD, MAC OSX [®] (including 10.4 to 10.8), all MAC PPD
Features	Auto configuration, bar code font printing, carbon copy print, chapter inserts, color adjustment settings, color mode, confidential print, continuous printing, custom image registration, different cover page/last page/other page, document control, document filing, duplex printing, electronic sorting, folding, form overlay, hidden pattern print, image rotation, image stamp, image type, job bypass print, job retention, layout print, margin shift, multiple pamphlet, network tandem print, N-up printing, offset stacking, page interleave, pamphlet style, poster print, proof print, print and send, print mode, punching, stapling, tab paper print, tab printing, toner save mode, transparency inserts, tray status, user authentication, watermarks, zoom print ¹
Direct Printing	File Types: TIFF, JPEG, PCL, PRN, TXT, PDF, Compact PDF, Encrypted PDF, PostScript and XPS. ¹ Methods: FTP, SMB, Web page, E-mail and USB memory
Resident Fonts	80 outline fonts (PCL), 136 fonts (PS)
Interface	RJ-45 Ethernet 10/100/1000 Base-T, USB 2.0
Operating Systems	Windows Server 2003, Windows Server 2008, Windows XP, Windows Vista, Windows Systems 7, Windows 8, Mac OS X10.4, X10.5, X10.6, X10.7, X10.8, Novell [®] NetWare [®] , UNIX [®] , Linux [®] and Citrix [®] (XenApp 5.0, 6.0, 6.5) and Windows Terminal Services, SAP device types ¹
Network Protocols	TCP/IP (IPv4, IPv6, IPSEC) SSL (HTTP, IPP, FTP), SNMPv3, SMTP, POP3, LDAP, 802.1x for Windows and Unix. LPD and LPR for Unix. IPX/SPX [®] for Novell environments. EtherTalk [®] , AppleTalk [®] for Macintosh [®] environments. ¹
Printing Protocols	LPR, IPP, IPPS, PAP, Raw TCP (port 9100), FTP, POP3, HTTP, and Novell Pserver/Rprinter
Network Security	IP/MAC address filtering, protocol filtering, port management, user authentication and document administration ¹
Security Standards	IEEE-2600™-2008, DoD (NISTSP) #11, CAC/PIV access control ¹

Network Scanning System

Scan Modes	Standard: Color, monochrome, grayscale
Max Original Size	11" x 17"
Optical Resolution	600 dpi
Output Modes	600 dpi, 400 dpi, 300 dpi, 200 dpi, 150 dpi, 100 dpi
Image Formats	Monochrome: TIFF, PDF, PDF/A, Encrypted PDF, XPS Color: Grayscale, Color TIFF, JPEG, PDF, PDF/A, Compact PDF, Encrypted PDF, XPS; Internet Fax: MH/MMR (option)
Image	Monochrome Scanning: Uncompressed, G3 (MH), G4 (MR/MMR)
Compression	Color/Grayscale: JPEG (high, middle, low) Internet Fax mode: MH/MMR (option)
Scan Destinations	E-mail, Desktop, FTP, Folder (SMB), USB, Internet fax (option), Super G3 fax (option) Up to 2,000 (combined scan destinations)
One-touch Destinations	Up to 500
Group Destinations	48 (combined)
Programs	Up to 100
Max. Jobs	Up to 100
Network Protocols	TCP/IP and SSL (includes HTTP, SMTP, LDAP, FTP, POP3), SMB, ESMTP and 802.1x
Network Security	E-mail server user authentication for LDAP and Active Directory Sharpdesk [®] desktop personal document management software (1 user license included), Sharpdesk Mobile (download)

B&W Super G3 Fax Kit (option)

Transmission Mode	Super G3, G3
Modem Speed	33.6 KBPS ³
Compression	JBIG, MMR, MR, MH
Methods	Sheet fed simplex or duplex or book
Scanning Method	400 dpi
Max. Resolution	Approx. 2 seconds with Super G3/JBIG ⁴
Transmit Speed	Up to 2,000 (combined scan destinations)
Auto Dialing	Up to 500 destinations
Group Dial	Forwards received fax data to E-mail, FTP, SMB, Desktop, Fax, I-Fax ¹
Inbound Fax Routing	Up to 33 1/4" (for transmission)
Long Originals	48 (combined)
Programs	1 GB
Memory	256 levels

1K Saddle Stitch Finisher (option)

Type	Console finisher with dual exit trays (mounts on left side of host machine)
Output Trays	Upper tray: Offset stack tray Lower tray: Book tray for saddle stitch
Output Capacity	1,000 sheets (letter/statement size) or 500 sheets (legal, ledger, letter)
Stapling	Up to 50 sheets (letter/statement) or 25 sheets (legal, ledger or mixed)
Output Delivery	Face down
Stapling Media	Plain paper, letter/legal/ledger size or mixed
Stapling Positions	1 front, 1 rear, or both
Saddle Stitch	Center stitch/center folding (2 staples)
Function	letter/legal/ledger paper sizes
Saddle Stitch	Up to 10 sets (11-15 sheets per set)/15 sets
Max. Sets	(6-10 sheets per set)/20 sets (1-5 sheets per set)
Power	Approx. 70 W or less (MX-FN10)/138 W or less (MX-FN18)
Consumption	
Hole Punching	Optional three-hole punch unit MX-PNX5B (MX-FN10)/MX-PNX6B (MX-FN18)
Weight	Approx. 88 lbs. (MX-FN10)/Approx. 161 lbs. (MX-FN18)
Dimensions	MX-FN10 (with tray extended): Approx. 26" (w) x 25" (d) x 39" (h) MX-FN18 (with tray extended): Approx. 30" (w) x 25" (d) x 44" (h)

4K Stacking Finisher (option)

Type	Console stacking finisher with dual exit trays (mounts on left side of host machine)
Output Trays	Fixed position upper tray and offset stacking lower tray
Output Capacity	Upper tray: 1,550 sheets (letter size, non-stapled) Lower tray: 2,450 sheets (letter size, non-stapled)
Stapling	Three position: Up to 50 sheets (letter/statement)
Power Consumption	Approx. 140 W
Hole Punching	Optional three-hole punch unit MX-PNX6B
Weight	Approx. 97 lbs.
Dimensions	(MX-FN11): Approx. 20" (w) x 25" (d) x 43" (h)

Optional Equipment

MX-DE21	Stand + 2,000-sheet Tandem Paper Drawer
MX-DE22	Stand/1 x 500 Sheet Paper Drawer
MX-DE23	Stand/2 x 500 Sheet Paper Drawer
MX-DS18	Deluxe Copier Cabinet
MX-LC11	Large Capacity Tray (requires MX-DS18/DE21/22/23)
MX-LT10	Long Paper Feeding Tray
MX-FNX9	Inner Finisher
MX-PNX1B	3-Hole Punch Unit (requires MX-FNX9)
MX-FN10	1K Saddle Stitch Finisher
MX-PNX5B	3-Hole Punch Unit (requires MX-FN10)
MX-FN11	4K Stacking Finisher
MX-FN18	4K Saddle Stitch Finisher
MX-PNX6B	3-Hole Punch Unit (requires MX-FN11/18)
MX-RB20	Paper Pass Unit (required for MX-FN10/11/18)
MX-SCX1	Staple Cartridge (5,000 staples) (requires MX-FNX9/FN10)
AR-SC2	Staple Cartridge (5,000 staples) (requires MX-FN11/18)
AR-SC3	Staple Cartridge (2,000 staples) (requires MX-FN10/18)
MX-TRX2	Right Exit Tray
MX-TU13	Center Exit Tray
MX-PUX1	XPS Expansion Kit
MX-FX11	Fax Expansion Kit
MX-FWX1	Internet Fax Kit
MX-PF10	Bar Code Font Kit
AR-SU1	Stamp Unit (requires AR-SV1 Stamp Cartridge)
AR-SV1	Stamp Cartridge
MX-KB11N	Keyboard (standard on the MX-4141N/5141N)
MX-EB11	Compact PDF Kit (standard on the MX-4141N/5141N)
MX-EB12N	Mirror Expansion Kit
MX-EC50	CAC Reader (requires Data Security Kit)
MX-AMX1	Application Integration Module
MX-AM10	Web Browsing Expansion Kit (standard on the MX-5141N)
MX-FR42U	Commercial Data Security Kit (not available at time of launch)
DVENDPS	Generic Vendor Interface Kit

Supplies

MX-51NTBA	Black Toner Cartridge
MX-51NTCA	Cyan Toner Cartridge
MX-51NTMA	Magenta Toner Cartridge
MX-51NTYA	Yellow Toner Cartridge
MX-51NVBA	Black Developer
MX-51NVSA	Cyan/Magenta/Yellow Developer
MX-31NRSA	Drum
MX-510HB	Toner Collection Container

¹ Some features require optional equipment. See your local dealer.

² May vary depending on product configuration, machine settings and operating and/or environmental conditions.

³ Actual transmission time will vary based on line conditions.

⁴ Based on Sharp Standard Test Chart with approximately 700 characters, letter size in standard resolution.



SHARP ELECTRONICS CORPORATION
Sharp Plaza, Mahwah, NJ 07495-1163
1-800-BE-SHARP • www.sharpusa.com

Design and specifications subject to change without notice. Sharp, Sharp OSA, Sharpdesk, My Sharp, and all related trademarks are trademarks or registered trademarks of Sharp Corporation and/or its affiliated companies. Windows, Windows Server and Windows Vista are trademarks or registered trademarks of Microsoft Corporation. All other trademarks are the property of their respective owners.

