

SHARP®

DESKTOP COLOR DOCUMENT SYSTEMS



MX-C407F MX-C507F

Sharp desktop color document systems deliver leading-edge integration and powerful productivity, all in a small compact design.

A HIGHER BENCHMARK OF INNOVATION

performance

The MX-C407F and MX-C507F desktop color document systems deliver crisp, high-quality output with exceptional ease of use. These models provide customers with an intuitive user experience and the confidence of knowing their jobs will come out right the first time, every time. Designed with robust features and technology typically found on larger machines, the MX-C407F and MX-C507F deliver the productivity you need with the performance and reliability you want in your workplace or home office.

Key Features

- **Ease of Use** – Intuitive 7" (diagonal) touchscreen display offers a user-friendly graphical interface with simplified Easy Modes, integrated user guides and quick access to network services.
- **Productivity** – Out-of-the-box copy, print, scan and fax capabilities standard plus **Cloud Connect** features and optional wireless connectivity enables users to easily manage their workflow from PCs, smartphones and tablets.
- **Workplace Friendly** – Integrates seamlessly with today's complex network environments and supports popular cloud services and mobile technologies. Sharp utilizes system updates to provide feature enhancements and to ensure your machine remains compatible with current technology.

The compact MX-C407F and MX-C507F desktop color document systems offer powerful productivity features enabling users to quickly execute workflow tasks whether in the office, or working from home.



DESIGNED TO DELIVER HIGH PRODUCTIVITY



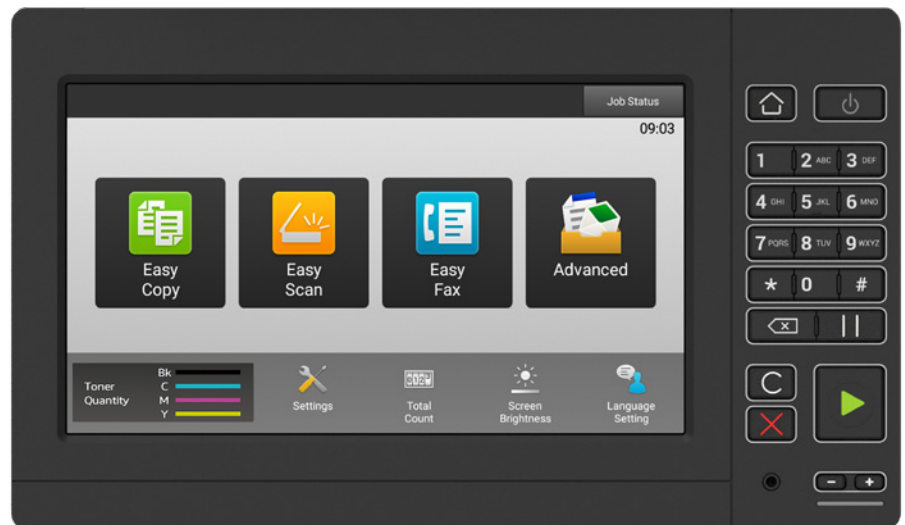
INTUITIVE INTERFACE

SEAMLESS CLOUD INTEGRATION

LEADING EDGE SECURITY

Reliable Document Systems that meet tomorrow's business needs today.

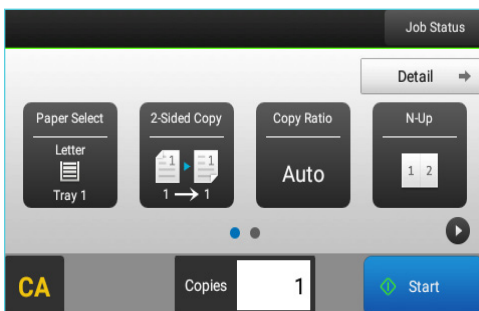
- Standard **copy, print, scan** and **fax** capability right out-of-the-box.
- **50-sheet reversing document feeder** scans both sides of a document in a single pass for enhanced productivity.
- Supports **letter size, legal size and envelopes** through the standard paper drawer or bypass tray.
- Offers up to **five paper sources** with available 2,300-sheet maximum paper capacity.
- 7" (diagonal) **color touchscreen** with adjustable viewing angle offers smooth, tablet-style interaction.



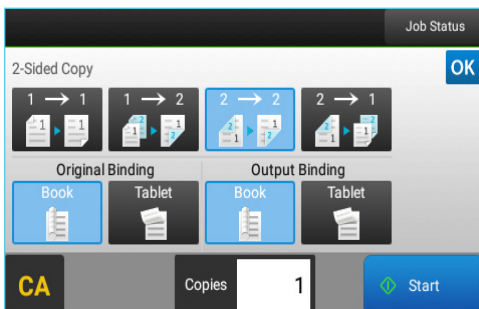
- Standard compact PDF feature dramatically reduces the file size of most color scanned documents.
- **Convenient USB port** located in the front of the device lets users access the machine quickly when printing direct from a USB drive.
- Print **Microsoft® Word, Excel®, or PowerPoint®** files directly from a mobile device, USB drive, or file server.
- Standard **optical character recognition (OCR)** on the MX-C507F and optional OCR on the MX-C407F allows users to convert a scanned document into a searchable PDF file or into an editable Word file.
- **Supports popular mobile technologies**, enabling users to easily print files from smartphones, tablets and even notebook computers.
- Protect your intellectual property: **a wide range of security features** help to keep your information safe, whether it's in a document, on the device, or over your network.



ADVANCED FUNCTIONALITY – COMPACT DESIGN



Easy Copy screen offers the most commonly used settings.



Easily copy documents in 1-sided or 2-sided formats.



Optional wireless network interface for convenient scanning and printing from mobile devices.

*Some features require optional equipment and/or software/services.

From paper handling to networking, the MX-C407F and MX-C507F desktop color document systems will exceed your expectations.

Simple and Intuitive Multifunction Printer (MFP) with Impressive Performance

When it's time to get the job done, the MX-C407F and MX-C507F are outstanding performers. Quickly scan documents at speeds up to **60 images per minute**. From basic copy functions to complex scan jobs, these models can get the job done efficiently. Use one of the **Easy Modes** for fast, simple operation, with basic functions displayed in **large, clearly-labeled tiles** and keys. For more advanced features, simply touch the "Detail" key.

A "Well-connected" Device

Connecting a MFP to your wireless network and accessing it from mobile devices has never been so easy with the MX-C407F and MX-C507F optional wireless networking features. Print-from or scan-to popular cloud services such as **Microsoft OneDrive™ for Business, SharePoint® Online, Dropbox, Box and Google Drive™** with the **Cloud Connect** feature.

Experience Secure and Convenient Printing with Synappx Go*

With **Synappx Go**, a mobile app that connects to Sharp MFPs for fast printing, your projects move with you throughout your workday, providing productivity wherever you go. Users can easily walk up to the MFP to release print jobs and print from cloud storage with convenience and privacy.



VERSATILE DESKTOP DOCUMENT SYSTEMS

The MX-C407F and MX-C507F desktop color document systems deliver the performance features you need in a space-saving, compact design that you want.

workflow centric

Reversing Single Pass Feeder (RSPF)

50-sheet Reversing Single Pass Feeder scans documents at up to 60 images per minute.

Easily Access Popular Cloud Applications

With the available Cloud Connect feature, users gain access to Microsoft OneDrive, Sharepoint, Google Drive, Dropbox and Box.

Flexible Document Handling

Both models can feed letter size, legal size, statement size and business card size original documents.

Easy-to-Use Smart Touchscreen

Tablet-style menu provides quick access to features and functions.

High Quality Printing

True 1,200 x 1,200 dpi resolution produces razor-sharp documents. PostScript® 3™ and PCL®6 drivers offer extensive job control.

100-Sheet Manual Bypass Tray

Convenient manual bypass tray feeds envelopes, OHP film, glossy paper and labels, as well as paper up to 65 lb. cover stock.

Print from Mobile Devices

Supports popular networking technologies, enabling users to easily print files from smartphones, tablets, and even notebooks.

Wired and Wireless Networking

Standard Gigabit Ethernet and optional Wi-Fi® network capabilities offer greater flexibility.²

Flexible Paper Handling

Paper drawers feed up to 8½" x 14" paper and support media up to 176 gsm (65 lb. cover). Supports up to 2,300 sheets in the paper drawers and bypass tray with options.

Multi-layered Security Features

Leading-edge features provide enhanced protection of data and personal information and helps protect against network intrusions.





ENHANCED COLLABORATION FOR STREAMLINED WORKFLOWS



Scan and convert documents to popular file formats seamlessly with optional Sharp OCR function.



Distribute, access and print documents more easily.



¹ May not yet be available for all models. Please contact a Sharp representative for further details.

² Some features require optional equipment and/or software/services.

Powerful workflow solutions to help you work more efficiently at home or in the office.

Distribute, Access and Print Your Documents with Ease

Sharp makes it easy to go beyond traditional network scanning with standard **Email Connect** and **Cloud Connect** features. With Email Connect, scan to email is seamlessly integrated with Microsoft Exchange/Office 365[®] and Gmail[™] user accounts, making it easy to identify the sender of scanned files. With the Cloud Connector users can easily scan-to and print-from **Microsoft OneDrive for Business, SharePoint Online, Google Drive, Box and Dropbox**¹.

Scan and Print Files Easily from Mobile Devices

Easily scan and print files from tablets and smartphones, popular mobile technologies such as **AirPrint[®]** and **Android[™] printing framework**. When optional wireless networking is added, users can also print directly to the MFP from mobile devices without interfering with the corporate network!¹

Manage Different File Types with Intelligent Image Processing

Easily scan documents to popular file formats including Microsoft Word, a variety of PDF formats such as Searchable PDF, TXT, RTF and others. You can also direct print these same file types from thumb drives, cloud applications and mobile devices.²

Flexible Printing Solutions Help Speed Up Your Office Productivity

Standard with **PostScript 3** and **PCL 6** compatible printing systems to help you speed through all of your output needs with accuracy. This feature allows you to easily and quickly print from Chromebook[™] notebook computers, PCs and more with precision.

Adaptability with Complete Business Workflows

Embedded solutions let users load and run software solutions tailored to their specific need or industry. Properly configured, apps installed on the MFP can interact with users' unique processes, applications and data repositories, with custom icons to drive each process, if desired.



MX-C507F shown with optional paper drawers



MX-C407F shown in standard configuration

TAKING CARE OF BUSINESS SAFELY AND SECURELY

Manage your device, help safeguard your data, help protect your business.

To help protect employees' privacy and intellectual property, these desktop color document systems are armed with secure access features to restrict and manage copy, print and scan features to protect data and control costs. Sharp document systems also offer user authentication, which when enabled requires walk-up users to logon to the MFP before access can be granted for copy, fax, or scan functions. A secure print release feature can also be enabled, which requires users to enter a PIN before documents can be printed, eliminating unclaimed jobs sitting on the printer. These devices are equipped with network security to defend against unauthorized access over network interfaces. Hard disk security helps to safeguard information stored on the device against unauthorized access and hacking.



These scalable security offerings aim to protect your intellectual property, preserve confidential information and help your business meet regulatory requirements including the Health Insurance Portability and Accountability Act (HIPAA) and the Family Educational Rights and Privacy Act (FERPA). For additional information visit: www.sharppusa.com/security.



With **Sharp Remote Device Manager (SRDM)**, administrators can take control of system features and simplify installation and management. SRDM makes it easy to view service logs, click counts, history reports and more. Event-driven service alerts help monitor the device and maximize uptime.

Also, secure remote management provides a wide range of tools and device capabilities to effectively manage a fleet of networked printers and multifunction products to make sure they are always up to date.



ENVIRONMENTAL COMMITMENT



An Environmentally Responsible Approach to Product Design

Sharp is committed to environmental sustainability and corporate responsibility including planning, design, manufacturing, distribution and product end-of-life management. The MX-C407F and MX-C507F adhere to Sharp's Green Products Guidelines in pursuit of these commitments. These guidelines include designing products that consume less power, using recycled materials, reducing the amount of material used in products and packaging and labeling the type of materials used. Sharp also aims to design products that are upgradable, easy to repair and easy to take apart for recycling.

The MX-C407F and MX-C507F document systems are ENERGY STAR® qualified and RoHS compliant to restrict the use of hazardous substances. These products also have low TEC values. Sharp MFPs are EPEAT® registered.



Toner Recycling Program

As part of our commitment to helping preserve the environment, Sharp offers our customers zero-waste-to-landfill recycling for Sharp consumables, including cartridges, bottles, toner collection containers and drum units. Sharp encourages customers to recycle their used Sharp toner cartridges in bulk by providing a pre-paid recycling kit for their return to our facility.

Environmental Leadership

As a testament to our commitment to the environment, Sharp is a multi-year winner of the ENERGY STAR annual Excellence in Energy Proficiency Product Design. Sharp is also a multi-year winner of the SmartWay® Excellence Award which recognizes companies for conserving energy and lowering greenhouse gas emissions in logistics and transportation.

For more information about Sharp's environmental leadership including information about energy efficient products, electronics or toner cartridge recycling, please visit www.sharppusa.com/environment.

MX-MX-C407F/C507F SPECIFICATIONS

Main Specifications

MX-C407F/C507F	Base model includes 50-sheet RSPF, PCL 6 and PostScript® 3™ compatible printing systems, network scanning, auto duplexing, 1 x 550-sheet paper drawer, 100-sheet bypass tray. Imaging Kits and starter toner is included.
Type	Desktop color multi-function printer
Display	7" (diagonal) color dot matrix high-resolution touchscreen
Functions	Copy, print, network print, network scan and fax
Originals	Sheets and bound documents
Max. Original Size	8½" x 14"
Output Size	Min. 5½" x 8½", Max. 8½" x 14"
Copy Speed	MX-C507F: 50 ppm MX-C407F: 40 ppm
First Copy Time (in seconds)²	Platen Glass: Mono 10, Color 12 Doc Feeder: Mono 6.5, Color 7
Magnification	25% to 400% in 1% increments
Original Feed	50-sheet RSPF
Scan Speed	Up to 60 ipm
Original Sizes	5½" x 8½", 8½" x 11", 8½" x 14", 2" x 3½" business card
Paper Capacity	Standard 650 sheets/ Max. 2,300 sheets
Paper Feed System	Standard: (1) 550-sheet paper drawers (letter/legal/statement/envelope size) System and 100-sheet bypass tray (letter/legal/statement/envelope size). Optional: (3) 550-sheet paper drawers (letter/legal/statement/envelope size)
Paper Weights and Types	Standard and optional paper drawers: Plain paper 16-28 lb bond, Heavy paper 28 lb bond-65 lb cover. Other paper types include plain, recycled, pre-punched, letterhead, pre-printed, color, gloss, cardstock, 6-28 lb. bond envelopes (up to 50) and 58 lb. bond labels. Bypass tray: 16-20 lb. bond (thin paper), 20-24 lb. bond (plain paper), 24lb. bond-65 lb. cover (heavy paper), 20-24 lb. bond, cardstock, and envelopes (up to 10).
Duplexing	Standard automatic duplex copying and printing
CPU	Up to 2.4 GHz multi-processor design or 5GHz with optional wireless
Interface¹	RJ-45 Ethernet (10/100/1000 Base-T), USB 2.0: 2 host, high speed ports (front), wireless LAN optional (IEEE 802.11 a/ac/b/g/n)
Memory	Standard 2 GB, Max. 4 GB
Hard Disk Drive¹	500 GB (optional on MX-C407F)
Copy Resolution	Up to 600 x 600 dpi
Copy Features	Scan-once print many, electronic sorting, Auto Paper Selection (APS), Auto Magnification (AMS), darkness, save as shortcut, auto center, background removal, contrast, mirror image, negative image, scan edge-to-edge, shadow detail, sharpness, color dropout, job build (with HDD), cover page setup, edge erase, header/ footer, margin shift, overlay, separator sheets.
Account Control	Supports user authentication via user-number
Output Tray Capacity	Center Exit Tray (Main): 300 sheets plain paper/50 envelopes
Cloud Supported Services³	Google Drive, OneDrive for Business, SharePoint Online, Box, Dropbox
Network Protocols	TCP/IP (IPv4, IPv6, TCP X, UDP X, IPSEC w/ IPv4 X, IPSEC w/ IPv6 X, ICMP X, IGMP X, 802.1x)

Main Specifications (continued)

Network and Data Security	Includes IP address filtering, protocol filtering, port control, TLS Encryption, Kerberos, AES 256-bit data encryption, data overwrite
Firmware Management	Flash ROM with local (USB), network update capability and firmware update 1 to N
Device Setup	Web-based management/cloning with user/administrator level login
Service/Functions	Remote Front Panel, remote access to service logs and click counts
Accessibility Features	Free stop tilting front panel adjustment of key touch sound and speed, document feeder free stop, job programs, and disable screen timeout
Environmental Standards	International ENERGY STAR Program Ver. 3.0, European RoHS, Blue Angel (RAL-UZ205)
Power	110-127V AC, 60 HZ, 12 A receptacle
Power	MX-C507F: 0.76 kWh
Consumption	MX-C407F: 0.65 kWh
Weight	Approx. 101 lbs.
Dimensions	19.9" (w) x 21" (d) x 25.5" (h)
Network Printing System	
PDL	Standard PCL® 6 and PostScript® 3™ compatible
Resolution	1,200 x 1,200 dpi
Print Speed	MX-C507F: 50 ppm (8½" x 11") MX-C407F: 40 ppm (8½" x 11")
Print Drivers	Windows® 7, Windows 8.1, Windows 10, Windows Server® 2008, Windows Server 2012, Windows Server 2016, Windows Server 2019, Windows PPD, MAC OSX® (including 10.10 to 10.15), all MAC PPD, UNIX®, Linux® PPD
Mobile Printing	AirPrint, Android printing framework
Print Features	Auto configuration, bar code font printing, confidential print, custom image registration, different cover page/last page/ other page, document filing, duplex printing, electronic sorting, form overlay, image rotation, image stamp, image type, job retention, layout print, N-up printing, page interleave, pamphlet style, proof print, toner save mode, tray status, user authentication, watermarks, zoom print.
Direct Printing	File Types: BMP, DCX, DOC/DOCX, GIF, JPEG, PCX, PDF, PNG, PPT/PPTX, TIFF, XLS/XLSX, XPS. Methods: FTP, SMB, Web page and USB memory
Resident Fonts	89 outline fonts (PCL), 158 fonts (PS)
Operating Systems and Environments	Windows 7, Windows 8, Windows 8.1 and Windows 10, Windows Server 2008, Windows Server 2010, Windows Server 2012, Windows Server 2016, Windows Server 2019, Citrix®, Linux®, UNIX
Printing Protocols	LPR, IPP, IPPS, PAP, Raw TCP (port 9100), FTP, POP3, HTTP, LPD and LPR for Unix
Network Scanning System	
Scan Modes	Standard: color, monochrome and grayscale
Max. Original Size	8½" x 14"
Optical Resolution	600 dpi

Network Scanning System (continued)

Output Modes	600 dpi, 400 dpi, 300 dpi, 200 dpi, 150 dpi, 75 dpi
Image	Color Scanning: Uncompressed, G3 (MH), G4 (MR/MMR)
Compression	Color/Grayscale: JPEG (high, middle, low)
Image Formats	JPEG, PDF, PDF/A-1a/1b, compact PDF, searchable PDF, encrypted PDF, TIFF, XPS
Scan Destinations	Email, Desktop, FTP, Folder (SMB), USB, Super G3 fax
Scanning Protocols	HTTP/HTTPS,FTP/FTPS, SMTP/SMTP/SMTP-SSL/ESMTP, POP3, LDAP, S/MIME
Software	Optional third party applications
Super G3 Facsimile Function	
Communication Line	Public Switched Telephone Network (PSTN) or Analog PABX (RJ-11)
Transmission Mode	Super G3, G3
Modem Speed	Maximum 33.6 KBPS with auto fallback
Compression	JBIG, MMR, MR, MH
Scanning Method	Sheet fed or manual feed from platen glass
Transmit Resolution	600 x 600 dpi (ultra-fine), 300 x 300 dpi (super-fine), 200 x 200 dpi (fine), 200 x 100 (standard)
Transmit Speed	Approx. 3 seconds per page in Super G3 mode
Auto Dialing	Up to 500 destinations (combined)
Group Dialing	Up to 500 groups
Inbound Fax Routing	To email address, FTP or Forward to Network Folder,also Document Administration function can send fax transmission logs, forward to Sharp eSF app and receptions to an administrator email address.
Max. Original Length	Up to 14"
Memory¹	1 GB (shared)
Features	Transaction Reports, Activity Reports, PC Fax, Quick On-line Transmission, Inbound Fax Routing, Anti-junk Fax Reception, Fax Release, Out-of-Paper Memory Reception, Auto Redial, Auto Exposure, Chain Dialing, Duplex Reception, Fax Forwarding, Cover Page, Color Fax and Scan Preview (with HDD).

Optional Equipment

MX-CS17	550-sheet Paper Feed Unit
----------------	---------------------------

Supplies

MX-C50TB	Black Toner Cartridge
MX-C50TC	Cyan Toner Cartridge
MX-C50TM	Magenta Toner Cartridge
MX-C50TY	Yellow Toner Cartridge
MX-C50DU-B	Black Imaging Kit
MX-C50DU-S	Color Imaging Kit

¹ Some features require optional equipment. See your local dealer.

² May vary depending on product configuration, machine settings and operating and/or environmental conditions.

³ May not yet be available for all models. Please contact a Sharp representative for further details.



SHARP®

SHARP ELECTRONICS CORPORATION
100 Paragon Drive, Montvale, NJ 07645
1-800-BE-SHARP • www.sharpusa.com

Sharp, Sharp OSA, Sharpdesk, My Sharp, and all related trademarks are trademarks or registered trademarks of Sharp Corporation and/or its affiliated companies. Microsoft, Office 365, Windows, Windows Server, Excel, PowerPoint, OneDrive, and SharePoint are trademarks or registered trademarks of Microsoft Corporation. Android, Chrome, Gmail, Google Drive and Chromebook are trademarks or registered trademarks of Google LLC. Adobe, the Adobe logo, PostScript, and PostScript 3 are either registered trademarks or trademarks of Adobe in the United States and/or other countries. All other trademarks are the property of their respective owners. Design and specifications subject to change without notice.